



[Go to Product page](#)

Datasheet for ABIN7212358

anti-COL2 antibody

1 Image

Overview

Quantity:	100 µL
Target:	COL2
Reactivity:	Human, Mouse, Rat
Host:	Mouse
Clonality:	Monoclonal
Conjugate:	This COL2 antibody is un-conjugated
Application:	Immunohistochemistry (Paraffin-embedded Sections) (IHC (p))

Product Details

Purpose:	Collagen II Mouse Monoclonal Antibody (1H1)
Immunogen:	Synthetic Peptide of Collagen II
Clone:	1H1
Isotype:	IgG1
Specificity:	The antibody detects endogenous Collagen II protein .
Purification:	The antibody was affinity-purified from mouse ascites by affinity-chromatography using specific immunogen

Target Details

Target:	COL2
Alternative Name:	Collagen II (COL2 Products)

Target Details

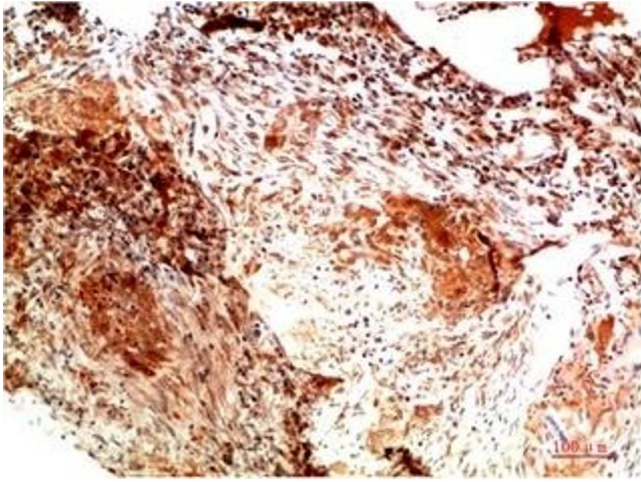
Background:	Mouse Anti-Collagen II Mouse Monoclonal Antibody (1H1),Collagen alpha-1(II) chain, Alpha-1 type II collagen,COL2A1 (collagen type II alpha 1 chain) encodes the alpha-1 chain of type II collagen, a fibrillar collagen found in cartilage and the vitreous humor of the eye. Mutations in COL2A1 are associated with achondrogenesis, chondrodysplasia, early onset familial osteoarthritis, SED congenita, Langer-Saldino achondrogenesis, Kniest dysplasia, Stickler syndrome type I, and spondyloepimetaphyseal dysplasia Strudwick type. In addition, defects in processing chondrocalcin, a calcium binding protein that is the C-propeptide of this collagen molecule, are also associated with chondrodysplasia. There are two transcripts identified for COL2A1.,Collagen alpha-1(II) chain (Alpha-1 type II collagen) [Cleaved into: Collagen alpha-1(II) chain, Chondrocalcin]
Molecular Weight:	observed band 142kDa
Gene ID:	1280
UniProt:	P02458

Application Details

Application Notes:	Optimal working dilutions should be determined experimentally by the investigator. Suggested starting dilutions are as follows: IHC-P (1:50-1:200).
Comment:	Primary Antibody
Restrictions:	For Research Use only

Handling

Format:	Liquid
Concentration:	1 mg/mL
Buffer:	PBS, pH 7.4, containing 0.02 % Sodium Azide as preservative and 50 % Glycerol.
Preservative:	Sodium azide
Precaution of Use:	This product contains Sodium azide: a POISONOUS AND HAZARDOUS SUBSTANCE which should be handled by trained staff only.
Storage:	-20 °C
Storage Comment:	Stable for one year at -20°C from date of shipment. For maximum recovery of product, centrifuge the original vial after thawing and prior to removing the cap. Aliquot to avoid repeated freezing and thawing.



Immunohistochemistry

Image 1. Immunohistochemical analysis of paraffin-embedded Human Lung Carcinoma Tissue using Collagen II Mouse mAb diluted at 1:200.