

Datasheet for ABIN7212658  
**anti-NRF2 antibody (acLys599)**



[Go to Product page](#)

7 Images

## Overview

Quantity:	100 µL
Target:	NRF2 (NFE2L2)
Binding Specificity:	acLys599
Reactivity:	Human, Rat, Mouse
Host:	Rabbit
Clonality:	Polyclonal
Conjugate:	This NRF2 antibody is un-conjugated
Application:	Western Blotting (WB), ELISA, Immunohistochemistry (Paraffin-embedded Sections) (IHC (p))

## Product Details

Purpose:	Nrf2 (Acetyl Lys599) Polyclonal Antibody
Immunogen:	Synthesized peptide derived from the C-terminal region of human Nrf2 around the acetylation site of K599
Isotype:	IgG
Specificity:	Acetyl-Nrf2 (K599) Polyclonal Antibody detects endogenous levels of Nrf2 protein only when non-acetylation at K599.
Purification:	The antibody was affinity-purified from rabbit antiserum by affinity-chromatography using epitope-specific immunogen

## Target Details

Target:	NRF2 (NFE2L2)
---------	---------------

## Target Details

---

Alternative Name:	Nrf2 ( <a href="#">NFE2L2 Products</a> )
Background:	Rabbit Anti-Nrf2 (Acetyl Lys599) Polyclonal Antibody,NFE2L2, NRF2, Nuclear factor erythroid 2-related factor 2, NF-E2-related factor 2, NFE2-related factor 2, HEBP1, Nuclear factor, erythroid derived 2, like 2,NFE2L2 encodes a transcription factor (nuclear factor, erythroid 2 like 2) which is a member of a small family of basic leucine zipper (bZIP) proteins. The encoded transcription factor regulates genes which contain antioxidant response elements (ARE) in their promoters, many of these genes encode proteins involved in response to injury and inflammation which includes the production of free radicals. Multiple transcript variants encoding different isoforms have been characterized for NFE2L2.,Nuclear factor erythroid 2-related factor 2
Molecular Weight:	observerd band 75-100kDa
Gene ID:	4780
UniProt:	<a href="#">Q16236</a>
Pathways:	<a href="#">ER-Nucleus Signaling</a> , <a href="#">Negative Regulation of intrinsic apoptotic Signaling</a>

## Application Details

---

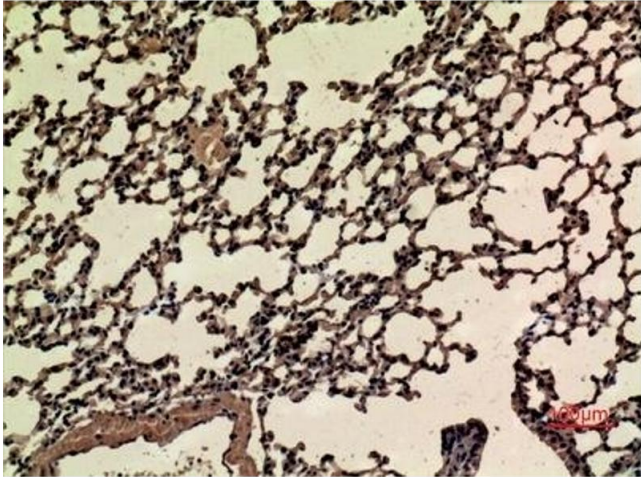
Application Notes:	Optimal working dilutions should be determined experimentally by the investigator. Suggested starting dilutions are as follows: WB (1:500-1:2000), IHC-P (1:100-1:300), ELISA (1:10000). Not yet tested in other applications.
Comment:	Primary Antibody
Restrictions:	For Research Use only

## Handling

---

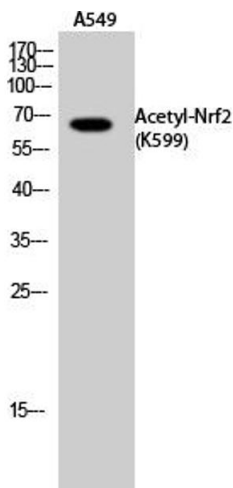
Format:	Liquid
Concentration:	1 mg/mL
Buffer:	PBS containing 50 % Glycerol, 0.5 % BSA and 0.02 % Sodium Azide.
Preservative:	Sodium azide
Precaution of Use:	This product contains Sodium azide: a POISONOUS AND HAZARDOUS SUBSTANCE which should be handled by trained staff only.
Storage:	-20 °C
Storage Comment:	Stable for one year at -20°C from date of shipment. For maximum recovery of product,

centrifuge the original vial after thawing and prior to removing the cap. Aliquot to avoid repeated freezing and thawing.



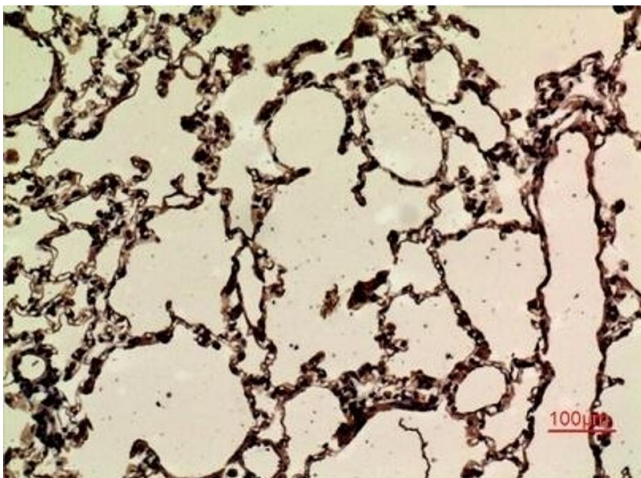
#### Immunohistochemistry

**Image 1.** Immunohistochemical analysis of paraffin-embedded mouse-lung, antibody was diluted at 1:100.



#### Western Blotting

**Image 2.** Western Blot analysis of A549 cells using Acetyl-Nrf2 (K599) Polyclonal Antibody. Antibody was diluted at 1:1000. Secondary Antibody was diluted at 1:20000.



#### Immunohistochemistry

**Image 3.** Immunohistochemical analysis of paraffin-embedded rat-lung, antibody was diluted at 1:100.

Please check the [product details page](#) for more images. Overall 7 images are available for ABIN7212658.