

Datasheet for ABIN7213580
anti-beta Amyloid antibody



[Go to Product page](#)

2 Images

Overview

Quantity:	100 µL
Target:	beta Amyloid (Abeta)
Reactivity:	Human, Mouse, Rat
Host:	Rabbit
Clonality:	Polyclonal
Conjugate:	This beta Amyloid antibody is un-conjugated
Application:	Western Blotting (WB), ELISA, Immunofluorescence (IF), Immunohistochemistry (Paraffin-embedded Sections) (IHC (p))

Product Details

Purpose:	Amyloid-β Polyclonal Antibody
Immunogen:	Synthesized peptide derived from human Amyloid-beta around the non-phosphorylation site of T743
Isotype:	IgG
Specificity:	Amyloid-β Polyclonal Antibody detects endogenous levels of Amyloid-β protein.
Purification:	The antibody was affinity-purified from rabbit antiserum by affinity-chromatography using epitope-specific immunogen

Target Details

Target:	beta Amyloid (Abeta)
Alternative Name:	Amyloid-beta (Abeta Products)

Target Details

Background: Rabbit Anti-Amyloid- β Polyclonal Antibody, APP, A4, AD1, Amyloid beta A4 protein, ABPP, APPI, APP, Alzheimer disease amyloid protein, Cerebral vascular amyloid peptide, CVAP, PreA4, Protease nexin-II, PN-II, APP encodes a cell surface receptor and transmembrane precursor protein (amyloid beta precursor protein) that is cleaved by secretases to form a number of peptides. Some of these peptides are secreted and can bind to the acetyltransferase complex APBB1/TIP60 to promote transcriptional activation, while others form the protein basis of the amyloid plaques found in the brains of patients with Alzheimer disease. In addition, two of the peptides are antimicrobial peptides, having been shown to have bacteriocidal and antifungal activities. Mutations in this gene have been implicated in autosomal dominant Alzheimer disease and cerebroarterial amyloidosis (cerebral amyloid angiopathy). Multiple transcript variants encoding several different isoforms have been found for APP., Amyloid beta A4 protein

Gene ID: 351

UniProt: [P05067](#)

Pathways: [Inflammasome](#)

Application Details

Application Notes: Optimal working dilutions should be determined experimentally by the investigator. Suggested starting dilutions are as follows: WB (1:500-1:2000), IHC-P (1:100-1:300), IF (1:200-1:1000), ELISA (1:40000). Not yet tested in other applications.

Comment: Primary Antibody

Restrictions: For Research Use only

Handling

Format: Liquid

Concentration: 1 mg/mL

Buffer: PBS containing 50 % Glycerol, 0.5 % BSA and 0.02 % Sodium Azide.

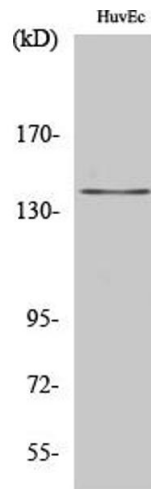
Preservative: Sodium azide

Precaution of Use: This product contains Sodium azide: a POISONOUS AND HAZARDOUS SUBSTANCE which should be handled by trained staff only.

Storage: -20 °C

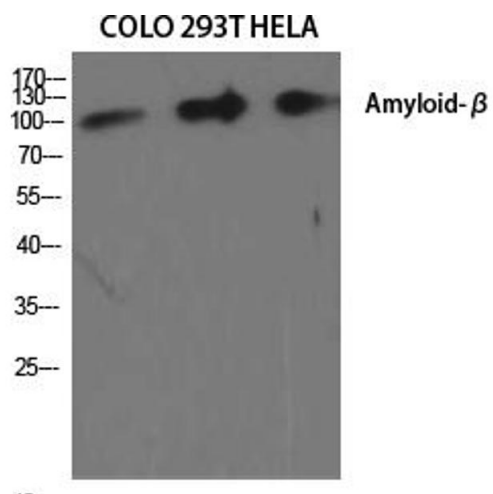
Storage Comment: Stable for one year at -20°C from date of shipment. For maximum recovery of product,

centrifuge the original vial after thawing and prior to removing the cap. Aliquot to avoid repeated freezing and thawing.



Western Blotting

Image 1. Western Blot analysis of HuvEc cells using Amyloid- β Polyclonal Antibody diluted at 1:2000.



Western Blotting

Image 2. Western Blot analysis of various cells using Amyloid- β Polyclonal Antibody diluted at 1:2000.