

Datasheet for ABIN7213698

anti-Androgen Receptor beta 2 antibody (AA 180-260)[Go to Product page](#)**2** Images

Overview

Quantity:	100 µL
Target:	Androgen Receptor beta 2
Binding Specificity:	AA 180-260
Reactivity:	Human, Mouse, Rat
Host:	Rabbit
Clonality:	Polyclonal
Conjugate:	This Androgen Receptor beta 2 antibody is un-conjugated
Application:	ELISA, Western Blotting (WB), Immunofluorescence (IF), Immunohistochemistry (Paraffin-embedded Sections) (IHC (p))

Product Details

Purpose:	AR-β2 Polyclonal Antibody
Immunogen:	Synthesized peptide derived from the Internal region of human AR-beta2 at AA range: 180-260
Isotype:	IgG
Specificity:	AR-β2 Polyclonal Antibody detects endogenous levels of AR-β2 protein.
Purification:	The antibody was affinity-purified from rabbit antiserum by affinity-chromatography using epitope-specific immunogen

Target Details

Target:	Androgen Receptor beta 2
---------	--------------------------

Target Details

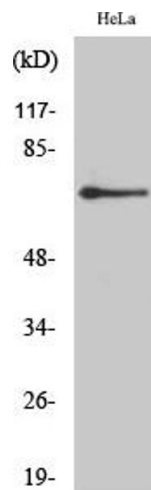
Alternative Name:	AR-beta2 (Androgen Receptor beta 2 Products)
Background:	Rabbit Anti-AR-β2 Polyclonal Antibody,ADRB2, ADRB2R, B2AR, Beta-2 adrenergic receptor, Beta-2 adrenoreceptor, Beta-2 adrenoceptor,ADRB2 encodes beta-2-adrenergic receptor which is a member of the G protein-coupled receptor superfamily. This receptor is directly associated with one of its ultimate effectors, the class C L-type calcium channel Ca (V)1.2. This receptor-channel complex also contains a G protein, an adenylyl cyclase, cAMP-dependent kinase, and the counterbalancing phosphatase, PP2A. The assembly of the signaling complex provides a mechanism that ensures specific and rapid signaling by this G protein-coupled receptor. ADRB2 is intronless. Different polymorphic forms, point mutations, and/or downregulation of this gene are associated with nocturnal asthma, obesity and type 2 diabetes.,Beta-2 adrenergic receptor
Gene ID:	154
UniProt:	P07550

Application Details

Application Notes:	Optimal working dilutions should be determined experimentally by the investigator. Suggested starting dilutions are as follows: WB (1:500-1:2000), IHC-P (1:100-1:300), IF (1:200-1:1000), ELISA (1:20000). Not yet tested in other applications.
Comment:	Primary Antibody
Restrictions:	For Research Use only

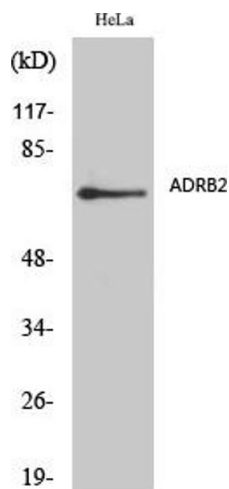
Handling

Format:	Liquid
Concentration:	1 mg/mL
Buffer:	PBS containing 50 % Glycerol, 0.5 % BSA and 0.02 % Sodium Azide.
Preservative:	Sodium azide
Precaution of Use:	This product contains Sodium azide: a POISONOUS AND HAZARDOUS SUBSTANCE which should be handled by trained staff only.
Storage:	-20 °C
Storage Comment:	Stable for one year at -20°C from date of shipment. For maximum recovery of product, centrifuge the original vial after thawing and prior to removing the cap. Aliquot to avoid repeated freezing and thawing.



Western Blotting

Image 1. Western Blot analysis of HeLa cells using AR- β 2 Polyclonal Antibody diluted at 1:2000.



Western Blotting

Image 2. Western Blot analysis of various cells using AR- β 2 Polyclonal Antibody diluted at 1:2000.