

Datasheet for ABIN7213982
anti-beta Catenin antibody



[Go to Product page](#)

2 Images

Overview

Quantity:	100 µL
Target:	beta Catenin (CATNB)
Reactivity:	Human, Mouse, Rat, Monkey
Host:	Rabbit
Clonality:	Polyclonal
Conjugate:	This beta Catenin antibody is un-conjugated
Application:	Western Blotting (WB), Immunofluorescence (IF), ELISA, Immunohistochemistry (Paraffin-embedded Sections) (IHC (p))

Product Details

Purpose:	Catenin-β Polyclonal Antibody
Immunogen:	Synthesized peptide derived from human Catenin-beta around the non-phosphorylation site of S33
Isotype:	IgG
Specificity:	Catenin-β Polyclonal Antibody detects endogenous levels of Catenin-β protein.
Purification:	The antibody was affinity-purified from rabbit antiserum by affinity-chromatography using epitope-specific immunogen

Target Details

Target:	beta Catenin (CATNB)
Alternative Name:	Catenin-beta (CATNB Products)

Target Details

Background: Rabbit Anti-Catenin- β Polyclonal Antibody, CTNNB1, CTNNB, OK/SW-cl.35, Catenin beta-1, Beta-catenin, The protein (catenin beta 1) encoded by CTNNB1 is part of a complex of proteins that constitute adherens junctions (AJs). AJs are necessary for the creation and maintenance of epithelial cell layers by regulating cell growth and adhesion between cells. The encoded protein also anchors the actin cytoskeleton and may be responsible for transmitting the contact inhibition signal that causes cells to stop dividing once the epithelial sheet is complete. Finally, this protein binds to the product of the APC gene, which is mutated in adenomatous polyposis of the colon. Mutations in CTNNB1 are a cause of colorectal cancer (CRC), pilomatixoma (PTR), medulloblastoma (MDB), and ovarian cancer. Three transcript variants encoding the same protein have been found for CTNNB1., Catenin beta-1

Molecular Weight: observed band 85kDa

Gene ID: 1499

UniProt: [P35222](#)

Pathways: [Peptide Hormone Metabolism](#)

Application Details

Application Notes: Optimal working dilutions should be determined experimentally by the investigator. Suggested starting dilutions are as follows: WB (1:500-1:2000), IHC-P (1:100-1:300), IF (1:200-1:1000), ELISA (1:20000). Not yet tested in other applications.

Comment: Primary Antibody

Restrictions: For Research Use only

Handling

Format: Liquid

Concentration: 1 mg/mL

Buffer: PBS containing 50 % Glycerol, 0.5 % BSA and 0.02 % Sodium Azide.

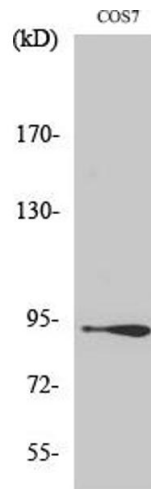
Preservative: Sodium azide

Precaution of Use: This product contains Sodium azide: a POISONOUS AND HAZARDOUS SUBSTANCE which should be handled by trained staff only.

Storage: -20 °C

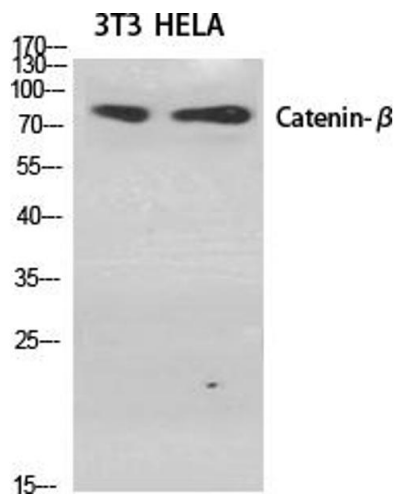
Storage Comment: Stable for one year at -20°C from date of shipment. For maximum recovery of product,

centrifuge the original vial after thawing and prior to removing the cap. Aliquot to avoid repeated freezing and thawing.



Western Blotting

Image 1. Western Blot analysis of COS7 cells using Catenin- β Polyclonal Antibody diluted at 1:2000.



Western Blotting

Image 2. Western Blot analysis of various cells using Catenin- β Polyclonal Antibody diluted at 1:2000.