

Datasheet for ABIN7213996
anti-Cathepsin E antibody (Internal Region)



[Go to Product page](#)

1 Image

Overview

Quantity:	100 µL
Target:	Cathepsin E (CTSE)
Binding Specificity:	Internal Region
Reactivity:	Human, Mouse, Rat
Host:	Rabbit
Clonality:	Polyclonal
Conjugate:	This Cathepsin E antibody is un-conjugated
Application:	Western Blotting (WB), ELISA, Immunohistochemistry (Paraffin-embedded Sections) (IHC (p))

Product Details

Purpose:	Cathepsin E Polyclonal Antibody
Immunogen:	Synthesized peptide derived from the Internal region of human Cathepsin E
Isotype:	IgG
Specificity:	Cathepsin E Polyclonal Antibody detects endogenous levels of Cathepsin E protein.
Purification:	The antibody was affinity-purified from rabbit antiserum by affinity-chromatography using epitope-specific immunogen

Target Details

Target:	Cathepsin E (CTSE)
Alternative Name:	Cathepsin E (CTSE Products)

Target Details

Background: Rabbit Anti-Cathepsin E Polyclonal Antibody,CTSE, Cathepsin E,CTSE encodes a member of the A1 family of peptidases. Alternative splicing of CTSE results in multiple transcript variants. At least one of these variants encodes a preproprotein that is proteolytically processed to generate the mature enzyme. This enzyme (cathepsin E), an aspartic endopeptidase, may be involved in antigen processing and the maturation of secretory proteins. Elevated expression of CTSE has been observed in neurodegeneration.,Cathepsin E

Molecular Weight: observed band 48kDa

Gene ID: 1510

UniProt: [P14091](#)

Application Details

Application Notes: Optimal working dilutions should be determined experimentally by the investigator. Suggested starting dilutions are as follows: WB (1:500-1:2000), IHC-P (1:100-1:300), ELISA (1:20000). Not yet tested in other applications.

Comment: Primary Antibody

Restrictions: For Research Use only

Handling

Format: Liquid

Concentration: 1 mg/mL

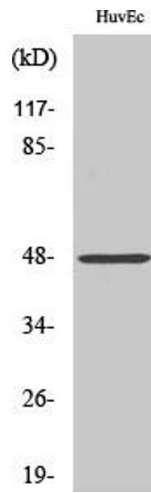
Buffer: PBS containing 50 % Glycerol, 0.5 % BSA and 0.02 % Sodium Azide.

Preservative: Sodium azide

Precaution of Use: This product contains Sodium azide: a POISONOUS AND HAZARDOUS SUBSTANCE which should be handled by trained staff only.

Storage: -20 °C

Storage Comment: Stable for one year at -20°C from date of shipment. For maximum recovery of product, centrifuge the original vial after thawing and prior to removing the cap. Aliquot to avoid repeated freezing and thawing.



Western Blotting

Image 1. Western Blot analysis of various cells using Cathepsin E Polyclonal Antibody.