



[Go to Product page](#)

Datasheet for ABIN7214012  
**anti-CBP antibody (AA 2370-2450)**

2 Images

### Overview

Quantity:	100 µL
Target:	CBP (CREBBP)
Binding Specificity:	AA 2370-2450
Reactivity:	Human, Mouse
Host:	Rabbit
Clonality:	Polyclonal
Conjugate:	This CBP antibody is un-conjugated
Application:	Western Blotting (WB), ELISA, Immunofluorescence (IF), Immunohistochemistry (Paraffin-embedded Sections) (IHC (p))

### Product Details

Purpose:	CBP Polyclonal Antibody
Immunogen:	Synthesized peptide derived from the C-terminal region of human CBP at AA range: 2370-2450
Isotype:	IgG
Specificity:	CBP Polyclonal Antibody detects endogenous levels of CBP protein.
Purification:	The antibody was affinity-purified from rabbit antiserum by affinity-chromatography using epitope-specific immunogen

### Target Details

Target:	CBP (CREBBP)
---------	--------------

## Target Details

---

Alternative Name: CBP ([CREBBP Products](#))

---

Background: Rabbit Anti-CBP Polyclonal Antibody, CREBBP, CBP, CREB-binding protein, CREBBP is ubiquitously expressed and is involved in the transcriptional coactivation of many different transcription factors. First isolated as a nuclear protein that binds to cAMP-response element binding protein (CREB), CREBBP is now known to play critical roles in embryonic development, growth control, and homeostasis by coupling chromatin remodeling to transcription factor recognition. CREB binding protein has intrinsic histone acetyltransferase activity and also acts as a scaffold to stabilize additional protein interactions with the transcription complex. CREB binding protein acetylates both histone and non-histone proteins. CREB binding protein shares regions of very high sequence similarity with protein p300 in its bromodomain, cysteine-histidine-rich regions, and histone acetyltransferase domain. Mutations in CREBBP cause Rubinstein-Taybi syndrome (RTS). Chromosomal translocations involving CREBBP have been associated with acute myeloid leukemia. Alternative splicing results in multiple transcript variants encoding different isoforms., CREB-binding protein

---

Molecular Weight: observed band 265kDa

---

Gene ID: 1387

---

UniProt: [Q92793](#)

---

Pathways: [TCR Signaling](#), [Interferon-gamma Pathway](#), [Stem Cell Maintenance](#), [Chromatin Binding](#), [Regulation of Lipid Metabolism by PPARalpha](#)

---

## Application Details

---

Application Notes: Optimal working dilutions should be determined experimentally by the investigator. Suggested starting dilutions are as follows: WB (1:500-1:2000), IHC-P (1:100-1:300), IF (1:200-1:1000), ELISA (1:10000). Not yet tested in other applications.

---

Comment: Primary Antibody

---

Restrictions: For Research Use only

---

## Handling

---

Format: Liquid

---

Concentration: 1 mg/mL

---

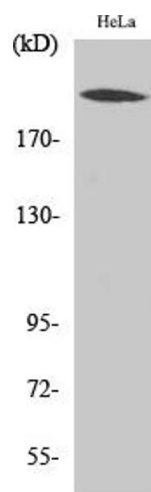
Buffer: PBS containing 50 % Glycerol, 0.5 % BSA and 0.02 % Sodium Azide.

---

## Handling

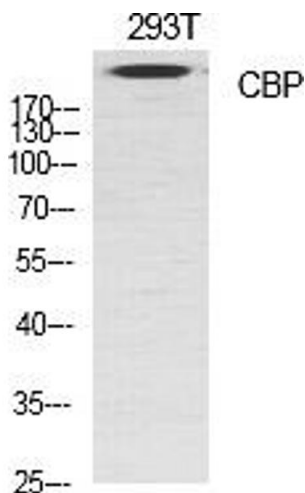
Preservative:	Sodium azide
Precaution of Use:	This product contains Sodium azide: a POISONOUS AND HAZARDOUS SUBSTANCE which should be handled by trained staff only.
Storage:	-20 °C
Storage Comment:	Stable for one year at -20°C from date of shipment. For maximum recovery of product, centrifuge the original vial after thawing and prior to removing the cap. Aliquot to avoid repeated freezing and thawing.

## Images



### Western Blotting

**Image 1.** Western Blot analysis of HeLa cells using CBP Polyclonal Antibody diluted at 1:1000.



### Western Blotting

**Image 2.** Western Blot analysis of various cells using CBP Polyclonal Antibody diluted at 1:1000.