

Datasheet for ABIN7214390  
**anti-Cyclin A antibody (AA 190-270)**



[Go to Product page](#)

5 Images

## Overview

Quantity:	100 µL
Target:	Cyclin A (CCNA2)
Binding Specificity:	AA 190-270
Reactivity:	Human, Mouse, Rat, Monkey
Host:	Rabbit
Clonality:	Polyclonal
Conjugate:	This Cyclin A antibody is un-conjugated
Application:	Western Blotting (WB), Immunofluorescence (IF), ELISA, Immunohistochemistry (Paraffin-embedded Sections) (IHC (p))

## Product Details

Purpose:	Cyclin A Polyclonal Antibody
Immunogen:	Synthesized peptide derived from the Internal region of human Cyclin A at AA range: 190-270
Isotype:	IgG
Specificity:	Cyclin A Polyclonal Antibody detects endogenous levels of Cyclin A protein.
Purification:	The antibody was affinity-purified from rabbit antiserum by affinity-chromatography using epitope-specific immunogen

## Target Details

Target:	Cyclin A (CCNA2)
---------	------------------

## Target Details

---

Alternative Name:	Cyclin A ( <a href="#">CCNA2 Products</a> )
Background:	Rabbit Anti-Cyclin A Polyclonal Antibody,CCNA1, Cyclin-A1, CCNA2, CCN1, CCNA, Cyclin-A2, Cyclin-A,Cyclin A1 encoded by CCNA1 belongs to the highly conserved cyclin family, whose members are characterized by a dramatic periodicity in protein abundance through the cell cycle. Cyclins function as regulators of CDK kinases. Different cyclins exhibit distinct expression and degradation patterns which contribute to the temporal coordination of each mitotic event. The cyclin encoded by this gene was shown to be expressed in testis and brain, as well as in several leukemic cell lines, and is thought to primarily function in the control of the germline meiotic cell cycle. This cyclin binds both CDK2 and CDC2 kinases, which give two distinct kinase activities, one appearing in S phase, the other in G2, and thus regulate separate functions in cell cycle. This cyclin was found to bind to important cell cycle regulators, such as Rb family proteins, transcription factor E2F-1, and the p21 family proteins. Multiple transcript variants encoding different isoforms have been found for CCNA1.,Cyclin-A1
Molecular Weight:	observed band 53kDa
Gene ID:	8900, 890
Pathways:	<a href="#">PI3K-Akt Signaling</a> , <a href="#">Cell Division Cycle</a> , <a href="#">AMPK Signaling</a> , <a href="#">Mitotic G1-G1/S Phases</a> , <a href="#">DNA Replication</a> , <a href="#">M Phase</a> , <a href="#">Synthesis of DNA</a>

## Application Details

---

Application Notes:	Optimal working dilutions should be determined experimentally by the investigator. Suggested starting dilutions are as follows: WB (1:500-1:2000), IHC-P (1:100-1:300), IF (1:200-1:1000), ELISA (1:10000). Not yet tested in other applications.
Comment:	Primary Antibody
Restrictions:	For Research Use only

## Handling

---

Format:	Liquid
Concentration:	1 mg/mL
Buffer:	PBS containing 50 % Glycerol, 0.5 % BSA and 0.02 % Sodium Azide.
Preservative:	Sodium azide
Precaution of Use:	This product contains Sodium azide: a POISONOUS AND HAZARDOUS SUBSTANCE which

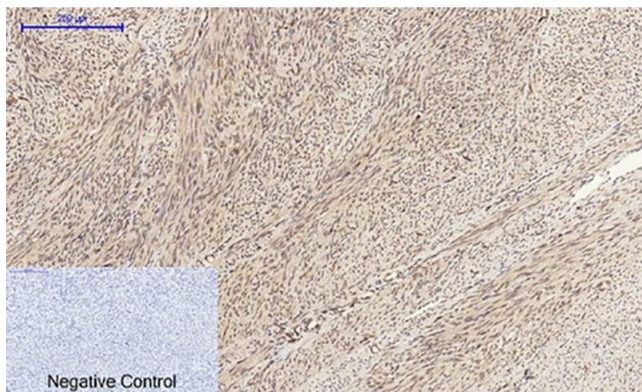
## Handling

should be handled by trained staff only.

Storage: -20 °C

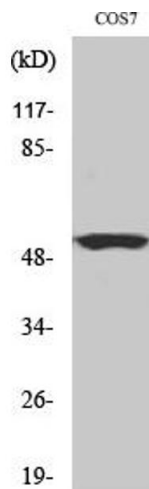
Storage Comment: Stable for one year at -20°C from date of shipment. For maximum recovery of product, centrifuge the original vial after thawing and prior to removing the cap. Aliquot to avoid repeated freezing and thawing.

## Images



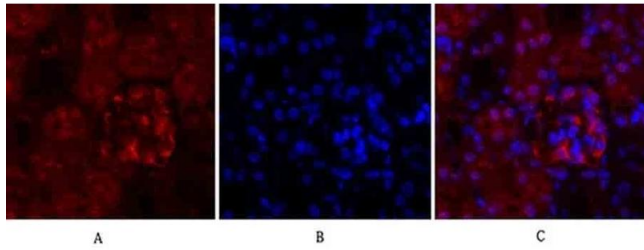
### Immunohistochemistry

**Image 1.** Immunohistochemical analysis of paraffin-embedded human uterus tissue. 1, Cyclin A Polyclonal Antibody was diluted at 1:200 (4 °C, overnight). 2, Sodium citrate pH 6.0 was used for antibody retrieval (>98 °C, 20 min). 3, secondary antibody was diluted at 1:200 (room temperature, 30 min). Negative control was used by secondary antibody only.



### Western Blotting

**Image 2.** Western Blot analysis of COS7 cells using Cyclin A Polyclonal Antibody, diluted at 1: 500.



### Immunofluorescence

**Image 3.** Immunofluorescence analysis of mouse kidney tissue. 1, Cyclin A Polyclonal Antibody (red) was diluted at 1:200 (4 °C, overnight). 2, Cy3 labeled secondary antibody was diluted at 1:300 (room temperature, 50 min). 3, Picture B: DAPI (blue) 10 min. Picture A: Target. Picture B: DAPI. Picture C: merge of A+B.

Please check the [product details page](#) for more images. Overall 5 images are available for ABIN7214390.