

Datasheet for ABIN7214474
anti-Cytochrome C1 antibody (AA 110-190)



[Go to Product page](#)

2 Images

Overview

Quantity:	100 µL
Target:	Cytochrome C1 (CYC1)
Binding Specificity:	AA 110-190
Reactivity:	Human, Mouse
Host:	Rabbit
Clonality:	Polyclonal
Conjugate:	This Cytochrome C1 antibody is un-conjugated
Application:	Western Blotting (WB), ELISA

Product Details

Purpose:	Cytochrome c1 Polyclonal Antibody
Immunogen:	Synthesized peptide derived from the Internal region of human Cytochrome c1 at AA range: 110-190
Isotype:	IgG
Specificity:	Cytochrome c1 Polyclonal Antibody detects endogenous levels of Cytochrome c1 protein.
Purification:	The antibody was affinity-purified from rabbit antiserum by affinity-chromatography using epitope-specific immunogen

Target Details

Target:	Cytochrome C1 (CYC1)
---------	----------------------

Target Details

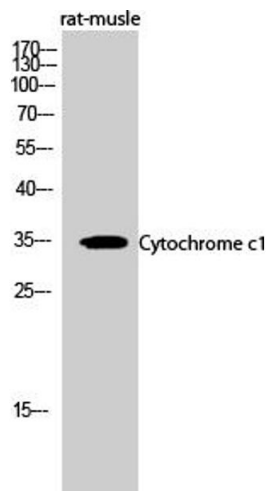
Alternative Name:	Cytochrome c1 (CYC1 Products)
Background:	Rabbit Anti-Cytochrome c1 Polyclonal Antibody,CYC1, Cytochrome c1, heme protein, mitochondrial, Complex III subunit 4, Complex III subunit IV, Cytochrome b-c1 complex subunit 4, Ubiquinol-cytochrome-c reductase complex cytochrome c1 subunit, Cytochrome c-1,CYC1 encodes a subunit of the cytochrome bc1 complex, which plays an important role in the mitochondrial respiratory chain by transferring electrons from the Rieske iron-sulfur protein to cytochrome c. Mutations in CYC1 may cause mitochondrial complex III deficiency, nuclear type 6.,Cytochrome c1 heme protein mitochondrial
Molecular Weight:	observerd band 35kDa
Gene ID:	1537
UniProt:	P08574

Application Details

Application Notes:	Optimal working dilutions should be determined experimentally by the investigator. Suggested starting dilutions are as follows: WB (1:500-1:2000), ELISA (1:20000). Not yet tested in other applications.
Comment:	Primary Antibody
Restrictions:	For Research Use only

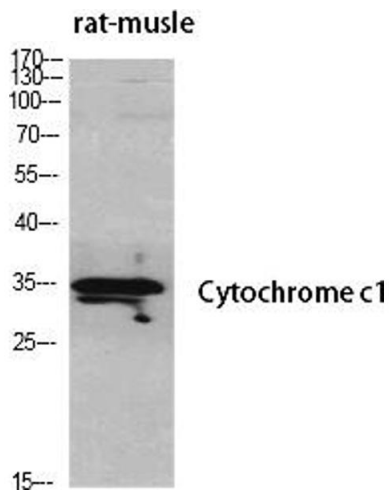
Handling

Format:	Liquid
Concentration:	1 mg/mL
Buffer:	PBS containing 50 % Glycerol, 0.5 % BSA and 0.02 % Sodium Azide.
Preservative:	Sodium azide
Precaution of Use:	This product contains Sodium azide: a POISONOUS AND HAZARDOUS SUBSTANCE which should be handled by trained staff only.
Storage:	-20 °C
Storage Comment:	Stable for one year at -20°C from date of shipment. For maximum recovery of product, centrifuge the original vial after thawing and prior to removing the cap. Aliquot to avoid repeated freezing and thawing.



Western Blotting

Image 1. Western Blot analysis of rat-muscle cells using Cytochrome c1 Polyclonal Antibody diluted at 1:500.



Western Blotting

Image 2. Western Blot analysis of various cells using Cytochrome c1 Polyclonal Antibody diluted at 1:500.