

Datasheet for ABIN7214626
anti-Dynamin 1-Like antibody



[Go to Product page](#)

6 Images

Overview

Quantity:	100 µL
Target:	Dynamin 1-Like (DNM1L)
Reactivity:	Human, Mouse, Rat
Host:	Rabbit
Clonality:	Polyclonal
Conjugate:	This Dynamin 1-Like antibody is un-conjugated
Application:	Western Blotting (WB), ELISA, Immunofluorescence (IF), Immunohistochemistry (Paraffin-embedded Sections) (IHC (p))

Product Details

Purpose:	DRP1 Polyclonal Antibody
Immunogen:	Synthesized peptide derived from human DRP1 around the non-phosphorylation site of S637
Isotype:	IgG
Specificity:	DRP1 Polyclonal Antibody detects endogenous levels of DRP1 protein.
Purification:	The antibody was affinity-purified from rabbit antiserum by affinity-chromatography using epitope-specific immunogen

Target Details

Target:	Dynamin 1-Like (DNM1L)
Alternative Name:	DRP1 (DNM1L Products)

Target Details

Background: Rabbit Anti-DRP1 Polyclonal Antibody, DNM1L, DLP1, DRP1, Dynamin-1-like protein, Dnm1p/Vps1p-like protein, DVLP, Dynamin family member proline-rich carboxyl-terminal domain less, Dymple, Dynamin-like protein, Dynamin-like protein 4, Dynamin-like protein IV, HdynIV, Dynamin-rela, DNM1L encodes a member of the dynamin superfamily of GTPases. Dynamin 1 like mediates mitochondrial and peroxisomal division, and is involved in developmentally regulated apoptosis and programmed necrosis. Dysfunction of this gene is implicated in several neurological disorders, including Alzheimer's disease. Mutations in this gene are associated with the autosomal dominant disorder, encephalopathy, lethal, due to defective mitochondrial and peroxisomal fission (EMPF). Alternative splicing results in multiple transcript variants encoding different isoforms., Dynamin-1-like protein

Molecular Weight: observed band 80kDa

Gene ID: 10059

UniProt: [O00429](#)

Application Details

Application Notes: Optimal working dilutions should be determined experimentally by the investigator. Suggested starting dilutions are as follows: WB (1:500-1:2000), IHC-P (1:100-1:300), ELISA (1:10000). Not yet tested in other applications.

Comment: Primary Antibody

Restrictions: For Research Use only

Handling

Format: Liquid

Concentration: 1 mg/mL

Buffer: PBS containing 50 % Glycerol, 0.5 % BSA and 0.02 % Sodium Azide.

Preservative: Sodium azide

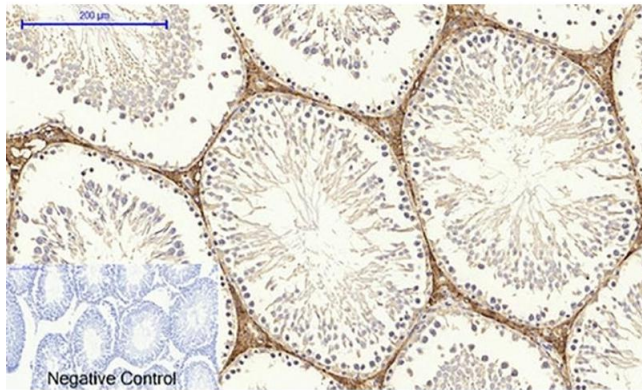
Precaution of Use: This product contains Sodium azide: a POISONOUS AND HAZARDOUS SUBSTANCE which should be handled by trained staff only.

Storage: -20 °C

Storage Comment: Stable for one year at -20°C from date of shipment. For maximum recovery of product, centrifuge the original vial after thawing and prior to removing the cap. Aliquot to avoid

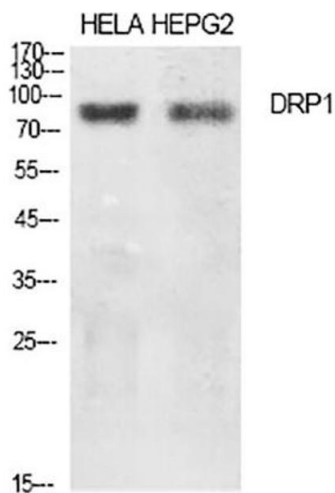
repeated freezing and thawing.

Images



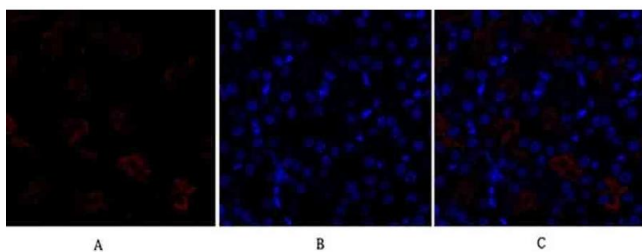
Immunohistochemistry

Image 1. Immunohistochemical analysis of paraffin-embedded rat testis tissue. 1, DRP1 Polyclonal Antibody was diluted at 1:200 (4 °C, overnight). 2, Sodium citrate pH 6.0 was used for antibody retrieval (>98 °C, 20 min). 3, secondary antibody was diluted at 1:200 (room temperature, 30 min). Negative control was used by secondary antibody only.



Western Blotting

Image 2. Western Blot analysis of HeLa (1), HEPG2 (2), diluted at 1:500.



Immunofluorescence

Image 3. Immunofluorescence analysis of mouse kidney tissue. 1, DRP1 Polyclonal Antibody (red) was diluted at 1:200 (4 °C, overnight). 2, Cy3 labeled secondary antibody was diluted at 1:300 (room temperature, 50 min). 3, Picture B: DAPI (blue) 10 min. Picture A: Target. Picture B: DAPI. Picture C: merge of A+B.

Please check the [product details page](#) for more images. Overall 6 images are available for ABIN7214626.