

Datasheet for ABIN7214827

anti-Ethanolamine Kinase 2 antibody (AA 30-110)[Go to Product page](#)**1** Image

Overview

Quantity:	200 µL
Target:	Ethanolamine Kinase 2 (ETNK2)
Binding Specificity:	AA 30-110
Reactivity:	Human, Mouse
Host:	Rabbit
Clonality:	Polyclonal
Conjugate:	This Ethanolamine Kinase 2 antibody is un-conjugated
Application:	Western Blotting (WB), ELISA, Immunohistochemistry (Paraffin-embedded Sections) (IHC (p))

Product Details

Purpose:	Ethanolamine kinase 2 Polyclonal Antibody
Immunogen:	Synthesized peptide derived from the Internal region of human Ethanolamine kinase 2 at AA range: 30-110
Isotype:	IgG
Specificity:	Ethanolamine kinase 2 Polyclonal Antibody detects endogenous levels of Ethanolamine kinase 2 protein.
Purification:	The antibody was affinity-purified from rabbit antiserum by affinity-chromatography using epitope-specific immunogen

Target Details

Target:	Ethanolamine Kinase 2 (ETNK2)
---------	-------------------------------

Target Details

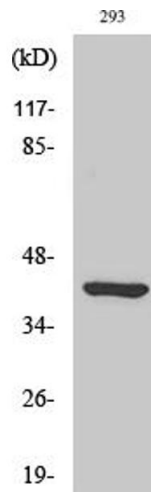
Alternative Name:	Ethanolamine kinase 2 (ETNK2 Products)
Background:	Rabbit Anti-Ethanolamine kinase 2 Polyclonal Antibody,ETNK2, EKI2, HMFT1716, Ethanolamine kinase 2, EKI 2, Ethanolamine kinase-like protein,Ethanolamine kinase 2 encoded by ETNK2 is a member of choline/ethanolamine kinase family which catalyzes the first step of phosphatidylethanolamine (PtdEtn) biosynthesis via the cytidine diphosphate (CDP) ethanolamine pathway. Alternative splicing results in multiple transcript variants.,Ethanolamine kinase 2
Molecular Weight:	observerd band 45kDa
Gene ID:	55224
UniProt:	Q9NVF9

Application Details

Application Notes:	Optimal working dilutions should be determined experimentally by the investigator. Suggested starting dilutions are as follows: WB (1:500-1:2000), ELISA (1:5000). Not yet tested in other applications.
Comment:	Primary Antibody
Restrictions:	For Research Use only

Handling

Format:	Liquid
Concentration:	1 mg/mL
Buffer:	PBS containing 50 % Glycerol, 0.5 % BSA and 0.02 % Sodium Azide.
Preservative:	Sodium azide
Precaution of Use:	This product contains Sodium azide: a POISONOUS AND HAZARDOUS SUBSTANCE which should be handled by trained staff only.
Storage:	-20 °C
Storage Comment:	Stable for one year at -20°C from date of shipment. For maximum recovery of product, centrifuge the original vial after thawing and prior to removing the cap. Aliquot to avoid repeated freezing and thawing.



Western Blotting

Image 1. Western Blot analysis of various cells using Ethanolamine kinase 2 Polyclonal Antibody.