

Datasheet for ABIN7215091  
**anti-GNL3L antibody (AA 40-120)**



[Go to Product page](#)

4 Images

## Overview

Quantity:	200 µL
Target:	GNL3L
Binding Specificity:	AA 40-120
Reactivity:	Human
Host:	Rabbit
Clonality:	Polyclonal
Conjugate:	This GNL3L antibody is un-conjugated
Application:	ELISA, Western Blotting (WB), Immunohistochemistry (Paraffin-embedded Sections) (IHC (p))

## Product Details

Purpose:	GNL3L Polyclonal Antibody
Immunogen:	Synthesized peptide derived from the Internal region of human GNL3L at AA range: 40-120
Isotype:	IgG
Specificity:	GNL3L Polyclonal Antibody detects endogenous levels of GNL3L protein.
Purification:	The antibody was affinity-purified from rabbit antiserum by affinity-chromatography using epitope-specific immunogen

## Target Details

Target:	GNL3L
Alternative Name:	GNL3L ( <a href="#">GNL3L Products</a> )

## Target Details

---

**Background:** Rabbit Anti-GNL3L Polyclonal Antibody,GNL3L, Guanine nucleotide-binding protein-like 3-like protein,Guanine nucleotide-binding protein-like 3-like protein encoded by GNL3L appears to be a nucleolar GTPase that is essential for ribosomal pre-rRNA processing and cell proliferation. Two transcript variants encoding the same protein have been found for this gene.,Guanine nucleotide-binding protein-like 3-like protein

**Molecular Weight:** observed band 66kDa

**Gene ID:** 54552

**UniProt:** [Q9NVN8](#)

## Application Details

---

**Application Notes:** Optimal working dilutions should be determined experimentally by the investigator. Suggested starting dilutions are as follows: WB (1:500-1:2000), IHC-P (1:100-1:300), ELISA (1:5000). Not yet tested in other applications.

**Comment:** Primary Antibody

**Restrictions:** For Research Use only

## Handling

---

**Format:** Liquid

**Concentration:** 1 mg/mL

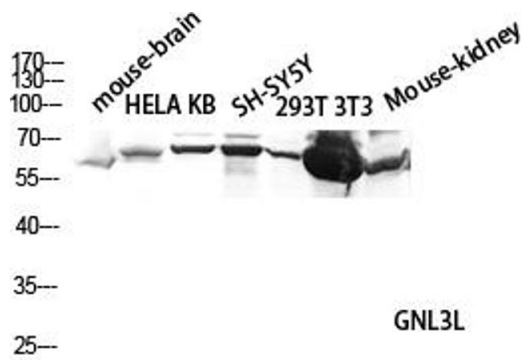
**Buffer:** PBS containing 50 % Glycerol, 0.5 % BSA and 0.02 % Sodium Azide.

**Preservative:** Sodium azide

**Precaution of Use:** This product contains Sodium azide: a POISONOUS AND HAZARDOUS SUBSTANCE which should be handled by trained staff only.

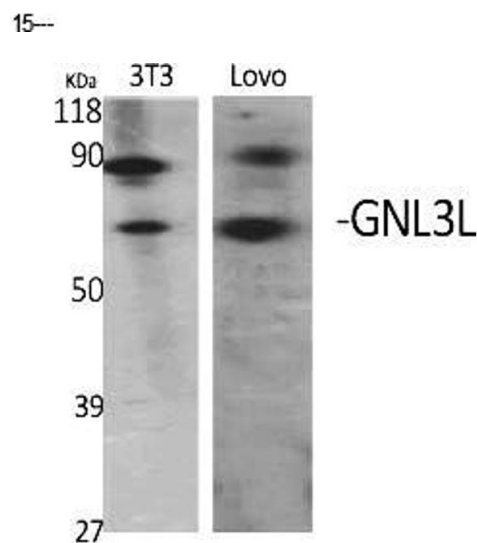
**Storage:** -20 °C

**Storage Comment:** Stable for one year at -20°C from date of shipment. For maximum recovery of product, centrifuge the original vial after thawing and prior to removing the cap. Aliquot to avoid repeated freezing and thawing.



#### Western Blotting

**Image 1.** Western blot analysis of Mouse-brain, hela, KB, SH-SY5Y, 293T, 3T3, Mouse-kidney lysate using GNL3L antibody. Antibody was diluted at 1:2000.



#### Western Blotting

**Image 2.** Western Blot analysis of various cells using GNL3L Polyclonal Antibody diluted at 1:2000.



#### Western Blotting

**Image 3.** Western Blot analysis of HT29 cells using GNL3L Polyclonal Antibody diluted at 1:2000.

Please check the [product details page](#) for more images. Overall 4 images are available for ABIN7215091.