

Datasheet for ABIN7215524  
**anti-Kcng2 antibody (AA 290-370)**



[Go to Product page](#)

1 Image

## Overview

Quantity:	100 µL
Target:	Kcng2
Binding Specificity:	AA 290-370
Reactivity:	Human, Mouse, Rat
Host:	Rabbit
Clonality:	Polyclonal
Conjugate:	This Kcng2 antibody is un-conjugated
Application:	Western Blotting (WB), ELISA

## Product Details

Purpose:	KCNG2 Polyclonal Antibody
Immunogen:	Synthesized peptide derived from the Internal region of human KCNG2 at AA range: 290-370
Isotype:	IgG
Specificity:	KCNG2 Polyclonal Antibody detects endogenous levels of KCNG2 protein.
Purification:	The antibody was affinity-purified from rabbit antiserum by affinity-chromatography using epitope-specific immunogen

## Target Details

Target:	Kcng2
Alternative Name:	KCNG2 ( <a href="#">Kcng2 Products</a> )

## Target Details

---

Background:	Rabbit Anti-KCNG2 Polyclonal Antibody, KCNG2, KCNF2, Potassium voltage-gated channel subfamily G member 2, Cardiac potassium channel subunit, Voltage-gated potassium channel subunit Kv6.2, Voltage-gated potassium (Kv) channels represent the most complex class of voltage-gated ion channels from both functional and structural standpoints. Their diverse functions include regulating neurotransmitter release, heart rate, insulin secretion, neuronal excitability, epithelial electrolyte transport, smooth muscle contraction, and cell volume. KCNG2 encodes a member of the potassium channel, voltage-gated, subfamily G. Potassium voltage-gated channel subfamily G member 2 is a gamma subunit of the voltage-gated potassium channel. The delayed-rectifier type channels containing this subunit may contribute to cardiac action potential repolarization., Potassium voltage-gated channel subfamily G member 2
Molecular Weight:	observed band 51kDa
Gene ID:	26251
UniProt:	<a href="#">Q9UJ96</a>

## Application Details

---

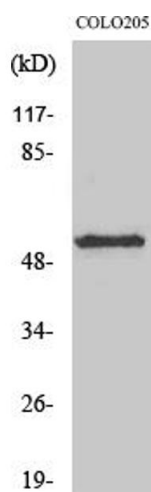
Application Notes:	Optimal working dilutions should be determined experimentally by the investigator. Suggested starting dilutions are as follows: WB (1:500-1:2000), ELISA (1:5000). Not yet tested in other applications.
Comment:	Primary Antibody
Restrictions:	For Research Use only

## Handling

---

Format:	Liquid
Concentration:	1 mg/mL
Buffer:	PBS containing 50 % Glycerol, 0.5 % BSA and 0.02 % Sodium Azide.
Preservative:	Sodium azide
Precaution of Use:	This product contains Sodium azide: a POISONOUS AND HAZARDOUS SUBSTANCE which should be handled by trained staff only.
Storage:	-20 °C
Storage Comment:	Stable for one year at -20°C from date of shipment. For maximum recovery of product, centrifuge the original vial after thawing and prior to removing the cap. Aliquot to avoid

repeated freezing and thawing.



#### Western Blotting

**Image 1.** Western Blot analysis of various cells using KCNG2 Polyclonal Antibody.