

Datasheet for ABIN7215588

**anti-LAT antibody**[Go to Product page](#)**1** Image

## Overview

Quantity:	100 µL
Target:	LAT
Reactivity:	Human, Mouse, Rat
Host:	Rabbit
Clonality:	Polyclonal
Conjugate:	This LAT antibody is un-conjugated
Application:	Western Blotting (WB), ELISA

## Product Details

Purpose:	LAT Polyclonal Antibody
Immunogen:	Synthesized peptide derived from human LAT around the non-phosphorylation site of Y200
Isotype:	IgG
Specificity:	LAT Polyclonal Antibody detects endogenous levels of LAT protein.
Purification:	The antibody was affinity-purified from rabbit antiserum by affinity-chromatography using epitope-specific immunogen

## Target Details

Target:	LAT
Alternative Name:	LAT ( <a href="#">LAT Products</a> )
Background:	Rabbit Anti-LAT Polyclonal Antibody, LAT, Linker for activation of T-cells family member 1, 36

## Target Details

---

kDa phospho-tyrosine adapter protein, pp36, p36-38, Linker for activation of T-cells family member 1 encoded by LAT is phosphorylated by ZAP-70/Syk protein tyrosine kinases following activation of the T-cell antigen receptor (TCR) signal transduction pathway. This transmembrane protein localizes to lipid rafts and acts as a docking site for SH2 domain-containing proteins. Upon phosphorylation, this protein recruits multiple adaptor proteins and downstream signaling molecules into multimolecular signaling complexes located near the site of TCR engagement. Alternative splicing results in multiple transcript variants encoding different isoforms., Linker for activation of T-cells family member 1

Molecular Weight:	observed band 38kDa
Gene ID:	27040
UniProt:	<a href="#">O43561</a>
Pathways:	<a href="#">TCR Signaling</a> , <a href="#">Fc-epsilon Receptor Signaling Pathway</a>

## Application Details

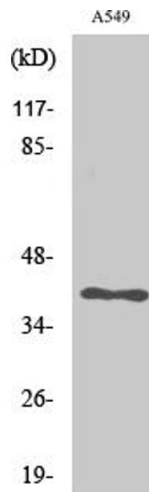
---

Application Notes:	Optimal working dilutions should be determined experimentally by the investigator. Suggested starting dilutions are as follows: WB (1:500-1:2000), ELISA (1:20000). Not yet tested in other applications.
Comment:	Primary Antibody
Restrictions:	For Research Use only

## Handling

---

Format:	Liquid
Concentration:	1 mg/mL
Buffer:	PBS containing 50 % Glycerol, 0.5 % BSA and 0.02 % Sodium Azide.
Preservative:	Sodium azide
Precaution of Use:	This product contains Sodium azide: a POISONOUS AND HAZARDOUS SUBSTANCE which should be handled by trained staff only.
Storage:	-20 °C
Storage Comment:	Stable for one year at -20°C from date of shipment. For maximum recovery of product, centrifuge the original vial after thawing and prior to removing the cap. Aliquot to avoid repeated freezing and thawing.



### Western Blotting

**Image 1.** Western Blot analysis of various cells using LAT Polyclonal Antibody.