

Datasheet for ABIN7215798  
**anti-MOBKL2B antibody (AA 40-120)**



[Go to Product page](#)

1 Image

## Overview

Quantity:	100 µL
Target:	MOBKL2B (MOB3B)
Binding Specificity:	AA 40-120
Reactivity:	Human, Mouse
Host:	Rabbit
Clonality:	Polyclonal
Conjugate:	This MOBKL2B antibody is un-conjugated
Application:	Western Blotting (WB), ELISA, Immunohistochemistry (Paraffin-embedded Sections) (IHC (p))

## Product Details

Purpose:	Mob3B Polyclonal Antibody
Immunogen:	Synthesized peptide derived from the Internal region of human Mob3B at AA range: 40-120
Isotype:	IgG
Specificity:	Mob3B Polyclonal Antibody detects endogenous levels of Mob3B protein.
Purification:	The antibody was affinity-purified from rabbit antiserum by affinity-chromatography using epitope-specific immunogen

## Target Details

Target:	MOBKL2B (MOB3B)
Alternative Name:	Mob3B ( <a href="#">MOB3B Products</a> )

## Target Details

---

**Background:** Rabbit Anti-Mob3B Polyclonal Antibody, MOB3B, MOBKL2B, MOB kinase activator 3B, Mob1 homolog 2b, Mps one binder kinase activator-like 2B, MOB kinase activator 3B encoded by MOB3B shares similarity with the yeast Mob1 protein. Yeast Mob1 binds Mps1p, a protein kinase essential for spindle pole body duplication and mitotic checkpoint regulation. MOB3B is located on the opposite strand as the interferon kappa precursor (IFNK) gene., MOB kinase activator 3B

**Molecular Weight:** observed band 23kDa

**Gene ID:** 79817

**UniProt:** [Q86TA1](#)

## Application Details

---

**Application Notes:** Optimal working dilutions should be determined experimentally by the investigator. Suggested starting dilutions are as follows: WB (1:500-1:2000), IHC-P (1:100-1:300), ELISA (1:5000). Not yet tested in other applications.

**Comment:** Primary Antibody

**Restrictions:** For Research Use only

## Handling

---

**Format:** Liquid

**Concentration:** 1 mg/mL

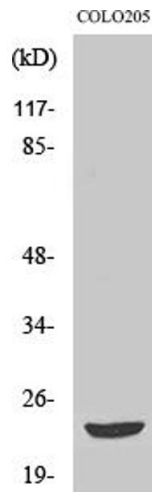
**Buffer:** PBS containing 50 % Glycerol, 0.5 % BSA and 0.02 % Sodium Azide.

**Preservative:** Sodium azide

**Precaution of Use:** This product contains Sodium azide: a POISONOUS AND HAZARDOUS SUBSTANCE which should be handled by trained staff only.

**Storage:** -20 °C

**Storage Comment:** Stable for one year at -20°C from date of shipment. For maximum recovery of product, centrifuge the original vial after thawing and prior to removing the cap. Aliquot to avoid repeated freezing and thawing.



### Western Blotting

**Image 1.** Western Blot analysis of various cells using Mob3B Polyclonal Antibody.