

Datasheet for ABIN7216027  
**anti-Neurofibromin 1 antibody (AA 1520-1600)**



[Go to Product page](#)

1 Image

## Overview

Quantity:	200 µL
Target:	Neurofibromin 1 (NF1)
Binding Specificity:	AA 1520-1600
Reactivity:	Human, Mouse, Rat
Host:	Rabbit
Clonality:	Polyclonal
Conjugate:	This Neurofibromin 1 antibody is un-conjugated
Application:	ELISA, Western Blotting (WB), Immunofluorescence (IF)

## Product Details

Purpose:	Neurofibromin Polyclonal Antibody
Immunogen:	Synthesized peptide derived from the Internal region of human Neurofibromin at AA range: 1520-1600
Isotype:	IgG
Specificity:	Neurofibromin Polyclonal Antibody detects endogenous levels of Neurofibromin protein.
Purification:	The antibody was affinity-purified from rabbit antiserum by affinity-chromatography using epitope-specific immunogen

## Target Details

Target:	Neurofibromin 1 (NF1)
---------	-----------------------

## Target Details

---

Alternative Name:	Neurofibromin ( <a href="#">NF1 Products</a> )
Background:	Rabbit Anti-Neurofibromin Polyclonal Antibody, NF1, Neurofibromin, Neurofibromatosis-related protein NF-1, NF1 product appears to function as a negative regulator of the ras signal transduction pathway. Mutations in this gene have been linked to neurofibromatosis type 1, juvenile myelomonocytic leukemia and Watson syndrome. The mRNA for this gene is subject to RNA editing (CGA>UGA->Arg1306Term) resulting in premature translation termination. Alternatively spliced transcript variants encoding different isoforms have also been described for this gene., Neurofibromin
Molecular Weight:	observed band 319kDa
Gene ID:	4763
UniProt:	<a href="#">P21359</a>
Pathways:	<a href="#">cAMP Metabolic Process</a> , <a href="#">Regulation of long-term Neuronal Synaptic Plasticity</a>

## Application Details

---

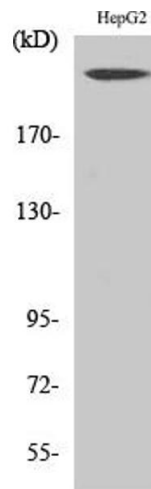
Application Notes:	Optimal working dilutions should be determined experimentally by the investigator. Suggested starting dilutions are as follows: WB (1:500-1:2000), IF (1:200-1:1000), ELISA (1:20000). Not yet tested in other applications.
Comment:	Primary Antibody
Restrictions:	For Research Use only

## Handling

---

Format:	Liquid
Concentration:	1 mg/mL
Buffer:	PBS containing 50 % Glycerol, 0.5 % BSA and 0.02 % Sodium Azide.
Preservative:	Sodium azide
Precaution of Use:	This product contains Sodium azide: a POISONOUS AND HAZARDOUS SUBSTANCE which should be handled by trained staff only.
Storage:	-20 °C
Storage Comment:	Stable for one year at -20°C from date of shipment. For maximum recovery of product, centrifuge the original vial after thawing and prior to removing the cap. Aliquot to avoid

repeated freezing and thawing.



#### Western Blotting

**Image 1.** Western Blot analysis of various cells using Neurofibromin Polyclonal Antibody.