

Datasheet for ABIN7216546
anti-PI3K p85 alpha/gamma antibody



[Go to Product page](#)

6 Images

Overview

Quantity:	100 µL
Target:	PI3K p85 alpha/gamma (PI3K p85a/g)
Reactivity:	Human, Mouse, Rat, Monkey, Chicken
Host:	Rabbit
Clonality:	Polyclonal
Conjugate:	This PI3K p85 alpha/gamma antibody is un-conjugated
Application:	Western Blotting (WB), ELISA, Immunofluorescence (IF), Immunohistochemistry (Paraffin-embedded Sections) (IHC (p))

Product Details

Purpose:	PI 3-kinase p85a/γ Polyclonal Antibody
Immunogen:	Synthesized peptide derived from human PI 3-kinase p85/p55 around the non-phosphorylation site of Y458/199
Isotype:	IgG
Specificity:	PI 3-kinase p85a/γ Polyclonal Antibody detects endogenous levels of PI 3-kinase p85a/γ protein.
Purification:	The antibody was affinity-purified from rabbit antiserum by affinity-chromatography using epitope-specific immunogen

Target Details

Target:	PI3K p85 alpha/gamma (PI3K p85a/g)
---------	------------------------------------

Target Details

Alternative Name:	PI 3-kinase p85alpha/gamma (PI3K p85a/g Products)
Background:	Rabbit Anti-PI 3-kinase p85α/γ Polyclonal Antibody, PIK3R1, GRB1, Phosphatidylinositol 3-kinase regulatory subunit alpha, PI3-kinase regulatory subunit alpha, PI3K regulatory subunit alpha, PtdIns-3-kinase regulatory subunit alpha, Phosphatidylinositol 3-kinase 85 kDa regulatory subunit alpha, Phosphatidylinositol 3-kinase phosphorylates the inositol ring of phosphatidylinositol at the 3-prime position. The enzyme comprises a 110 kD catalytic subunit and a regulatory subunit of either 85, 55, or 50 kD. PIK3R1 encodes the 85 kD regulatory subunit. Phosphatidylinositol 3-kinase plays an important role in the metabolic actions of insulin, and a mutation in PIK3R1 has been associated with insulin resistance. Alternative splicing of PIK3R1 results in four transcript variants encoding different isoforms., Phosphatidylinositol 3-kinase regulatory subunit alpha
Molecular Weight:	observed band 54+83kDa
Gene ID:	5295, 8503

Application Details

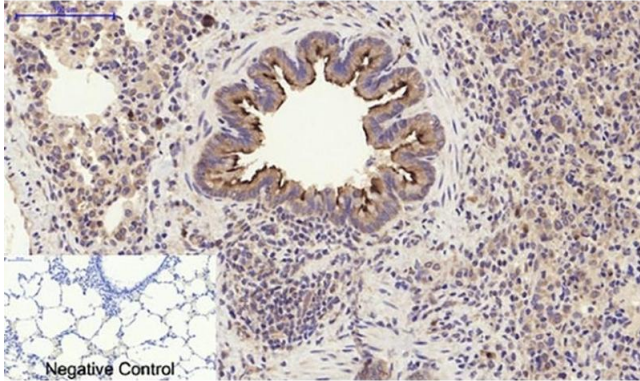
Application Notes:	Optimal working dilutions should be determined experimentally by the investigator. Suggested starting dilutions are as follows: WB (1:500-1:2000), IHC-P (1:100-1:300), IF (1:200-1:1000), ELISA (1:20000). Not yet tested in other applications.
Comment:	Primary Antibody
Restrictions:	For Research Use only

Handling

Format:	Liquid
Concentration:	1 mg/mL
Buffer:	PBS containing 50 % Glycerol, 0.5 % BSA and 0.02 % Sodium Azide.
Preservative:	Sodium azide
Precaution of Use:	This product contains Sodium azide: a POISONOUS AND HAZARDOUS SUBSTANCE which should be handled by trained staff only.
Storage:	-20 °C
Storage Comment:	Stable for one year at -20°C from date of shipment. For maximum recovery of product, centrifuge the original vial after thawing and prior to removing the cap. Aliquot to avoid

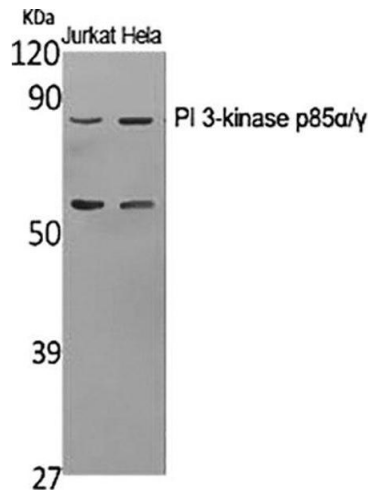
repeated freezing and thawing.

Images



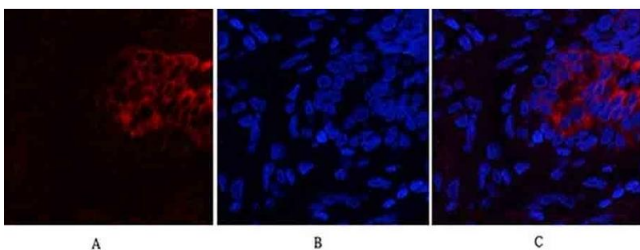
Immunohistochemistry

Image 1. Immunohistochemical analysis of paraffin-embedded rat lung tissue. 1, PI 3-kinase p85α/γ Polyclonal Antibody was diluted at 1:200 (4 °C, overnight). 2, Sodium citrate pH 6.0 was used for antibody retrieval (>98 °C, 20 min). 3, secondary antibody was diluted at 1:200 (room temperature, 30 min). Negative control was used by secondary antibody only.



Western Blotting

Image 2. Western Blot analysis of Jurkat (1), HeLa (2), diluted at 1:1000.



Immunofluorescence

Image 3. Immunofluorescence analysis of human lung tissue. 1, PI 3-kinase p85α/γ Polyclonal Antibody (red) was diluted at 1:200 (4 °C, overnight). 2, Cy3 Labeled secondary antibody was diluted at 1:300 (room temperature, 50 min). 3, Picture B: DAPI (blue) 10 min. Picture A: Target. Picture B: DAPI. Picture C: merge of A+B.

Please check the [product details page](#) for more images. Overall 6 images are available for ABIN7216546.