

Datasheet for ABIN7216748
anti-RAD50 antibody (AA 650-730)



[Go to Product page](#)

1 Image

Overview

Quantity:	100 µL
Target:	RAD50
Binding Specificity:	AA 650-730
Reactivity:	Human, Mouse, Rat
Host:	Rabbit
Clonality:	Polyclonal
Conjugate:	This RAD50 antibody is un-conjugated
Application:	Western Blotting (WB), ELISA, Immunohistochemistry (Paraffin-embedded Sections) (IHC (p))

Product Details

Purpose:	Rad50 Polyclonal Antibody
Immunogen:	Synthesized peptide derived from the Internal region of human Rad50 at AA range: 650-730
Isotype:	IgG
Specificity:	Rad50 Polyclonal Antibody detects endogenous levels of Rad50 protein.
Purification:	The antibody was affinity-purified from rabbit antiserum by affinity-chromatography using epitope-specific immunogen

Target Details

Target:	RAD50
Alternative Name:	Rad50 (RAD50 Products)

Target Details

Background:	Rabbit Anti-Rad50 Polyclonal Antibody,RAD50, DNA repair protein RAD50, hRAD50,RAD50 double strand break repair protein encoded by RAD50 is highly similar to Saccharomyces cerevisiae Rad50, a protein involved in DNA double-strand break repair. RAD50 double strand break repair protein forms a complex with MRE11 and NBS1. RAD50 double strand break repair protein complex binds to DNA and displays numerous enzymatic activities that are required for nonhomologous joining of DNA ends. RAD50 double strand break repair protein, cooperating with its partners, is important for DNA double-strand break repair, cell cycle checkpoint activation, telomere maintenance, and meiotic recombination. Knockout studies of the mouse homolog suggest RAD50 is essential for cell growth and viability. Mutations in RAD50 are the cause of Nijmegen breakage syndrome-like disorder.,DNA repair protein RAD50
Molecular Weight:	observed band 153kDa
Gene ID:	10111
UniProt:	Q92878
Pathways:	DNA Damage Repair , Protein targeting to Nucleus

Application Details

Application Notes:	Optimal working dilutions should be determined experimentally by the investigator. Suggested starting dilutions are as follows: WB (1:500-1:2000), IHC-P (1:100-1:300), ELISA (1:20000). Not yet tested in other applications.
Comment:	Primary Antibody
Restrictions:	For Research Use only

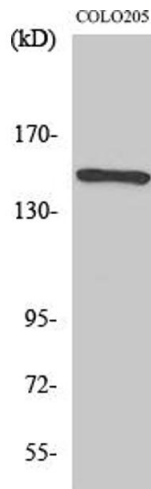
Handling

Format:	Liquid
Concentration:	1 mg/mL
Buffer:	PBS containing 50 % Glycerol, 0.5 % BSA and 0.02 % Sodium Azide.
Preservative:	Sodium azide
Precaution of Use:	This product contains Sodium azide: a POISONOUS AND HAZARDOUS SUBSTANCE which should be handled by trained staff only.
Storage:	-20 °C
Storage Comment:	Stable for one year at -20°C from date of shipment. For maximum recovery of product,

Handling

centrifuge the original vial after thawing and prior to removing the cap. Aliquot to avoid repeated freezing and thawing.

Images



Western Blotting

Image 1. Western Blot analysis of various cells using Rad50 Polyclonal Antibody diluted at 1:1000.