



[Go to Product page](#)

Datasheet for ABIN721675
anti-SPANXC antibody (AA 21-97)

2 Images

Overview

Quantity:	100 µL
Target:	SPANXC
Binding Specificity:	AA 21-97
Reactivity:	Human
Host:	Rabbit
Clonality:	Polyclonal
Conjugate:	This SPANXC antibody is un-conjugated
Application:	ELISA, Western Blotting (WB), Immunohistochemistry (Paraffin-embedded Sections) (IHC (p)), Immunofluorescence (Paraffin-embedded Sections) (IF (p)), Immunofluorescence (Cultured Cells) (IF (cc)), Immunohistochemistry (Frozen Sections) (IHC (fro))

Product Details

Immunogen:	KLH conjugated synthetic peptide derived from human SPANXA
Isotype:	IgG
Specificity:	This antibody may detects SPANX-A, SPANX-B, SPANX-C, SPANX-D
Cross-Reactivity:	Human
Purification:	Purified by Protein A.

Target Details

Target:	SPANXC
---------	--------

Target Details

Alternative Name: SPANX ([SPANXC Products](#))

Background: Synonyms: NAP-X, SPANX, CT11.1, SPAN-X, SPAN-Xa, SPAN-Xb, SPANX-A, Sperm protein associated with the nucleus on the X chromosome A, Cancer/testis antigen 11.1, Nuclear-associated protein SPAN-Xa, SPANX family member A, SPANXA1, SPANXA

Background: Temporally regulated transcription and translation of several testis-specific genes is required to initiate the series of molecular and morphological changes in the male germ cell lineage necessary for the formation of mature spermatozoa. This gene is a member of the SPANX family of cancer/testis-associated genes, which are located in a cluster on chromosome X. The SPANX genes encode differentially expressed testis-specific proteins that localize to various subcellular compartments. This particular gene maps to chromosome X in a head-to-head orientation with SPANX family member A2, which appears to be a duplication of the A1 locus. The protein encoded by this gene targets to the nucleus where it associates with nuclear vacuoles and the redundant nuclear envelope. Based on its association with these poorly characterized regions of the sperm nucleus, this protein provides a biochemical marker to study unique structures in spermatazoa while attempting to further define its role in spermatogenesis. [provided by RefSeq, Jul 2008]

Gene ID: 30014

UniProt: [Q9NS26](#)

Application Details

Application Notes: WB 1:300-5000
ELISA 1:500-1000
IHC-P 1:200-400
IHC-F 1:100-500
IF(IHC-P) 1:50-200
IF(IHC-F) 1:50-200
IF(ICC) 1:50-200

Restrictions: For Research Use only

Handling

Format: Liquid

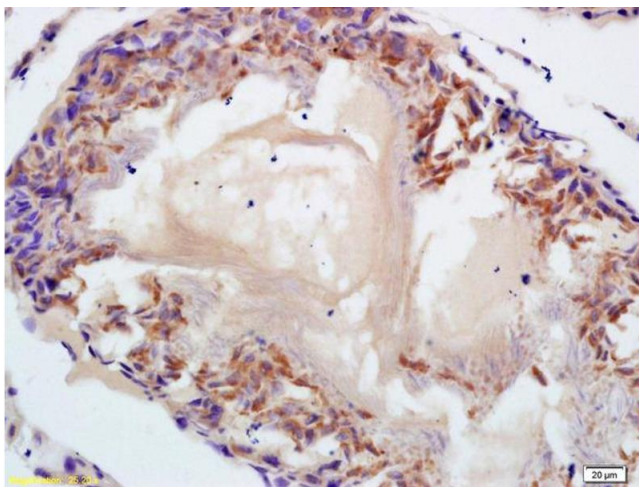
Concentration: 1 µg/µL

Buffer: 0.01M TBS(pH 7.4) with 1 % BSA, 0.02 % Proclin300 and 50 % Glycerol.

Handling

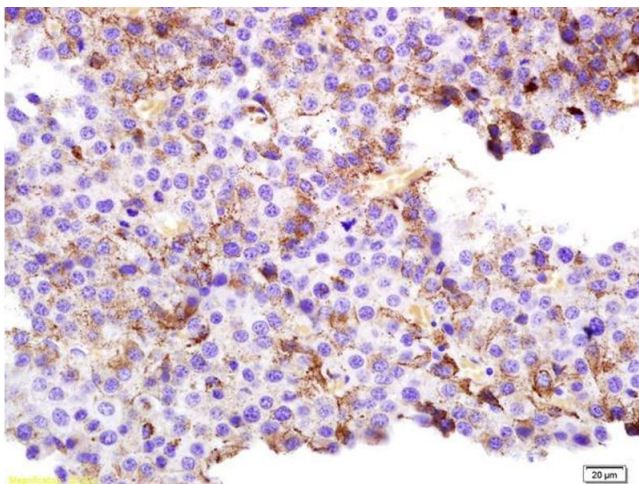
Preservative:	ProClin
Precaution of Use:	This product contains ProClin: a POISONOUS AND HAZARDOUS SUBSTANCE, which should be handled by trained staff only.
Storage:	4 °C,-20 °C
Storage Comment:	Shipped at 4°C. Store at -20°C for one year. Avoid repeated freeze/thaw cycles.
Expiry Date:	12 months

Images



Immunohistochemistry

Image 1. Formalin-fixed and paraffin embedded rat testis labeled with Anti-SPANX Polyclonal Antibody, Unconjugated (ABIN721675) at 1:200 followed by conjugation to the secondary antibody and DAB staining.



Immunohistochemistry

Image 2. Formalin-fixed and paraffin embedded rat melanoma labeled with Anti-SPANX Polyclonal Antibody, Unconjugated (ABIN721675) at 1:200 followed by conjugation to the secondary antibody and DAB staining.