

Datasheet for ABIN7216752

anti-RAD52 antibody[Go to Product page](#)**2** Images

Overview

Quantity:	100 µL
Target:	RAD52
Reactivity:	Human, Mouse
Host:	Rabbit
Clonality:	Polyclonal
Conjugate:	This RAD52 antibody is un-conjugated
Application:	Western Blotting (WB), ELISA, Immunofluorescence (IF), Immunohistochemistry (Paraffin-embedded Sections) (IHC (p))

Product Details

Purpose:	Rad52 Polyclonal Antibody
Immunogen:	Synthesized peptide derived from human Rad52 around the non-phosphorylation site of Y104
Isotype:	IgG
Specificity:	Rad52 Polyclonal Antibody detects endogenous levels of Rad52 protein.
Purification:	The antibody was affinity-purified from rabbit antiserum by affinity-chromatography using epitope-specific immunogen

Target Details

Target:	RAD52
Alternative Name:	Rad52 (RAD52 Products)

Target Details

Background: Rabbit Anti-Rad52 Polyclonal Antibody, RAD52, DNA repair protein RAD52 homolog, RAD52 homolog, DNA repair protein encoded by RAD52 shares similarity with *Saccharomyces cerevisiae* Rad52, a protein important for DNA double-strand break repair and homologous recombination. RAD52 product was shown to bind single-stranded DNA ends, and mediate the DNA-DNA interaction necessary for the annealing of complementary DNA strands. It was also found to interact with DNA recombination protein RAD51, which suggested its role in RAD51 related DNA recombination and repair. A pseudogene of RAD52 is present on chromosome 2. Alternative splicing results in multiple transcript variants. Additional alternatively spliced transcript variants of RAD52 have been described, but their full-length nature is not known., DNA repair protein RAD52 homolog

Molecular Weight: observed band 46kDa

Gene ID: 5893

UniProt: [P43351](#)

Pathways: [DNA Damage Repair](#)

Application Details

Application Notes: Optimal working dilutions should be determined experimentally by the investigator. Suggested starting dilutions are as follows: WB (1:500-1:2000), IHC-P (1:100-1:300), IF (1:200-1:1000), ELISA (1:10000). Not yet tested in other applications.

Comment: Primary Antibody

Restrictions: For Research Use only

Handling

Format: Liquid

Concentration: 1 mg/mL

Buffer: PBS containing 50 % Glycerol, 0.5 % BSA and 0.02 % Sodium Azide.

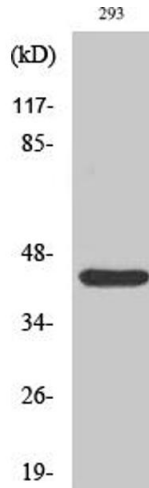
Preservative: Sodium azide

Precaution of Use: This product contains Sodium azide: a POISONOUS AND HAZARDOUS SUBSTANCE which should be handled by trained staff only.

Storage: -20 °C

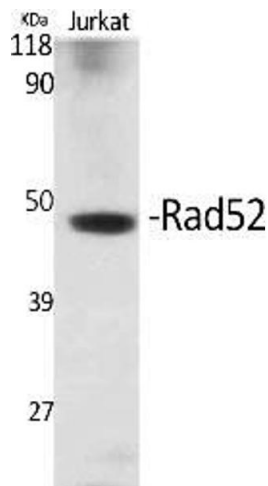
Storage Comment: Stable for one year at -20°C from date of shipment. For maximum recovery of product,

centrifuge the original vial after thawing and prior to removing the cap. Aliquot to avoid repeated freezing and thawing.



Western Blotting

Image 1. Western Blot analysis of 293 cells using Rad52 Polyclonal Antibody.



Western Blotting

Image 2. Western Blot analysis of various cells using Rad52 Polyclonal Antibody.