

Datasheet for ABIN7217298

anti-TGFBR1 antibody**2** Images[Go to Product page](#)

Overview

Quantity:	100 µL
Target:	TGFBR1
Reactivity:	Human, Mouse, Rat
Host:	Rabbit
Clonality:	Polyclonal
Conjugate:	This TGFBR1 antibody is un-conjugated
Application:	Western Blotting (WB), ELISA, Immunofluorescence (IF)

Product Details

Purpose:	TGFβ RI Polyclonal Antibody
Immunogen:	Synthesized peptide derived from human TGFbeta RI around the non-phosphorylation site of S165
Isotype:	IgG
Specificity:	TGFβ RI Polyclonal Antibody detects endogenous levels of TGFβ RI protein.
Purification:	The antibody was affinity-purified from rabbit antiserum by affinity-chromatography using epitope-specific immunogen

Target Details

Target:	TGFBR1
Alternative Name:	TGFbeta RI (TGFBR1 Products)

Target Details

Background: Rabbit Anti-TGFβ RI Polyclonal Antibody, TGFBR1, ALK5, SKR4, TGF-beta receptor type-1, TGFR-1, Activin A receptor type II-like protein kinase of 53kD, Activin receptor-like kinase 5, ALK-5, ALK5, Serine/threonine-protein kinase receptor R4, SKR4, TGF-beta type I receptor, Transfor, TGF-beta receptor type-1 encoded by TGFBR1 forms a heteromeric complex with type II TGF-beta receptors when bound to TGF-beta, transducing the TGF-beta signal from the cell surface to the cytoplasm. The TGF-beta receptor type-1 is a serine/threonine protein kinase. Mutations in this gene have been associated with Loeys-Dietz aortic aneurysm syndrome (LDAS). Multiple transcript variants encoding different isoforms have been found for this gene., TGF-beta receptor type-1

Molecular Weight: observed band 56kDa

Gene ID: 7046

UniProt: [P36897](#)

Pathways: [Growth Factor Binding](#)

Application Details

Application Notes: Optimal working dilutions should be determined experimentally by the investigator. Suggested starting dilutions are as follows: WB (1:500-1:2000), IF (1:200-1:1000), ELISA (1:10000). Not yet tested in other applications.

Comment: Primary Antibody

Restrictions: For Research Use only

Handling

Format: Liquid

Concentration: 1 mg/mL

Buffer: PBS containing 50 % Glycerol, 0.5 % BSA and 0.02 % Sodium Azide.

Preservative: Sodium azide

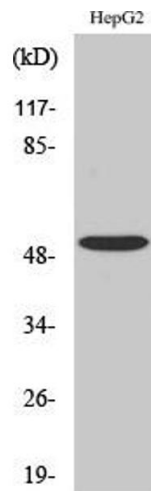
Precaution of Use: This product contains Sodium azide: a POISONOUS AND HAZARDOUS SUBSTANCE which should be handled by trained staff only.

Storage: -20 °C

Storage Comment: Stable for one year at -20°C from date of shipment. For maximum recovery of product, centrifuge the original vial after thawing and prior to removing the cap. Aliquot to avoid

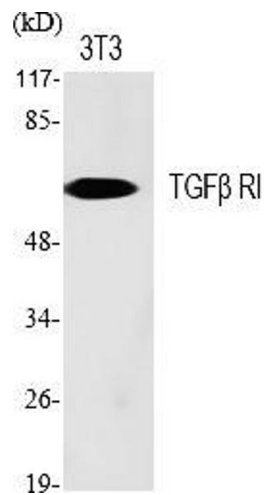
repeated freezing and thawing.

Images



Western Blotting

Image 1. Western Blot analysis of COLO205 cells using TGFβ RI Polyclonal Antibody diluted at 1:500.



Western Blotting

Image 2. Western Blot analysis of various cells using TGFβ RI Polyclonal Antibody diluted at 1:500.