

Datasheet for ABIN7217348  
**anti-LTA antibody (Internal Region)**



[Go to Product page](#)

1 Image

## Overview

Quantity:	100 µL
Target:	LTA
Binding Specificity:	Internal Region
Reactivity:	Human, Rat, Mouse, Monkey
Host:	Rabbit
Clonality:	Polyclonal
Application:	Western Blotting (WB), ELISA

## Product Details

Purpose:	TNF-β Polyclonal Antibody
Immunogen:	Synthesized peptide derived from the Internal region of human TNF-beta
Isotype:	IgG
Specificity:	TNF-β Polyclonal Antibody detects endogenous levels of TNF-β protein.
Purification:	The antibody was affinity-purified from rabbit antiserum by affinity-chromatography using epitope-specific immunogen

## Target Details

Target:	LTA
Alternative Name:	TNF-beta ( <a href="#">LTA Products</a> )
Target Type:	Chemical

## Target Details

---

**Background:** Rabbit Anti-TNF- $\beta$  Polyclonal Antibody, LTA, TNFB, TNFSF1, Lymphotoxin-alpha, LT-alpha, TNF-beta, Tumor necrosis factor ligand superfamily member 1, The lymphotoxin-alpha, a member of the tumor necrosis factor family, is a cytokine produced by lymphocytes. Lymphotoxin-alpha is highly inducible, secreted, and forms heterotrimers with lymphotoxin-beta which anchor lymphotoxin-alpha to the cell surface. This protein also mediates a large variety of inflammatory, immunostimulatory, and antiviral responses, is involved in the formation of secondary lymphoid organs during development and plays a role in apoptosis. Genetic variations in this gene are associated with susceptibility to leprosy type 4, myocardial infarction, non-Hodgkin's lymphoma, and psoriatic arthritis. Alternatively spliced transcript variants have been observed for this gene. Lymphotoxin-alpha

**Molecular Weight:** observed band 22kDa

**Gene ID:** 4049

**UniProt:** [P01374](#)

**Pathways:** [Regulation of Leukocyte Mediated Immunity](#), [Positive Regulation of Immune Effector Process](#)

## Application Details

---

**Application Notes:** Optimal working dilutions should be determined experimentally by the investigator. Suggested starting dilutions are as follows: WB (1:500-1:2000), ELISA (1:40000). Not yet tested in other applications.

**Comment:** Primary Antibody

**Restrictions:** For Research Use only

## Handling

---

**Format:** Liquid

**Concentration:** 1 mg/mL

**Buffer:** PBS containing 50 % Glycerol, 0.5 % BSA and 0.02 % Sodium Azide.

**Preservative:** Sodium azide

**Precaution of Use:** This product contains Sodium azide: a POISONOUS AND HAZARDOUS SUBSTANCE which should be handled by trained staff only.

**Storage:** -20 °C

**Storage Comment:** Stable for one year at -20°C from date of shipment. For maximum recovery of product,

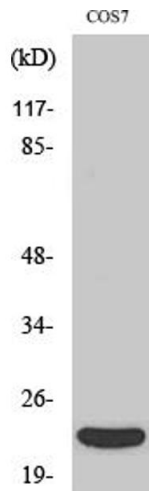
## Handling

---

centrifuge the original vial after thawing and prior to removing the cap. Aliquot to avoid repeated freezing and thawing.

## Images

---



### Western Blotting

**Image 1.** Western Blot analysis of various cells using TNF- $\beta$  Polyclonal Antibody diluted at 1:1000. Secondary antibody (ABIN7205155) was diluted at 1:20000.