

Datasheet for ABIN721750  
**anti-XAGE2 antibody (AA 30-70)**

## 3 Images

[Go to Product page](#)

## Overview

Quantity:	100 µL
Target:	XAGE2
Binding Specificity:	AA 30-70
Reactivity:	Human
Host:	Rabbit
Clonality:	Polyclonal
Conjugate:	This XAGE2 antibody is un-conjugated
Application:	ELISA, Western Blotting (WB), Immunofluorescence (Cultured Cells) (IF (cc)), Immunofluorescence (Paraffin-embedded Sections) (IF (p)), Immunohistochemistry (Frozen Sections) (IHC (fro)), Immunohistochemistry (Paraffin-embedded Sections) (IHC (p))

## Product Details

Immunogen:	KLH conjugated synthetic peptide derived from human XAGE2
Isotype:	IgG
Cross-Reactivity:	Human
Purification:	Purified by Protein A.

## Target Details

Target:	XAGE2
Alternative Name:	XAGE2 ( <a href="#">XAGE2 Products</a> )

## Target Details

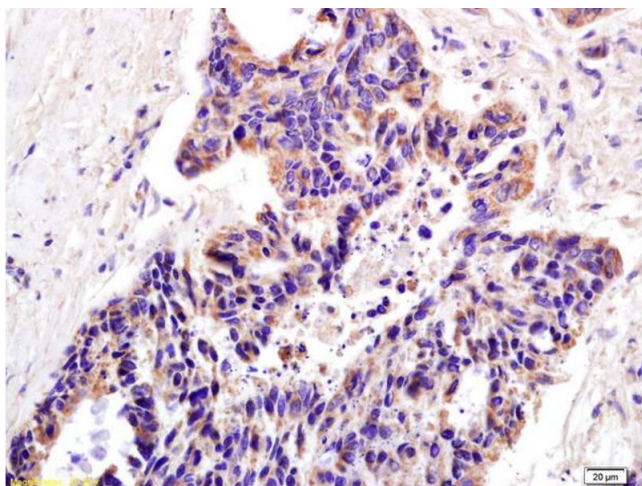
Background:	Synonyms: CT12.2, GAGED3, XAGE-2, X antigen family member 2, Cancer/testis antigen 12.2, G antigen family D member 3, XAGE2  Background: XAGE2 belongs to the GAGE family of genes which are expressed in a variety of tumors and in some fetal and reproductive tissues. XAGE2 is strongly expressed in normal testis, and in Ewing's sarcoma, rhabdomyosarcoma, a breast cancer and a germ cell tumor. Its function is unknown.
Gene ID:	9502
UniProt:	<a href="#">Q96GT9</a>

## Application Details

Application Notes:	WB 1:300-5000 ELISA 1:500-1000 IHC-P 1:200-400 IHC-F 1:100-500 IF(IHC-P) 1:50-200 IF(IHC-F) 1:50-200 IF(ICC) 1:50-200
Restrictions:	For Research Use only

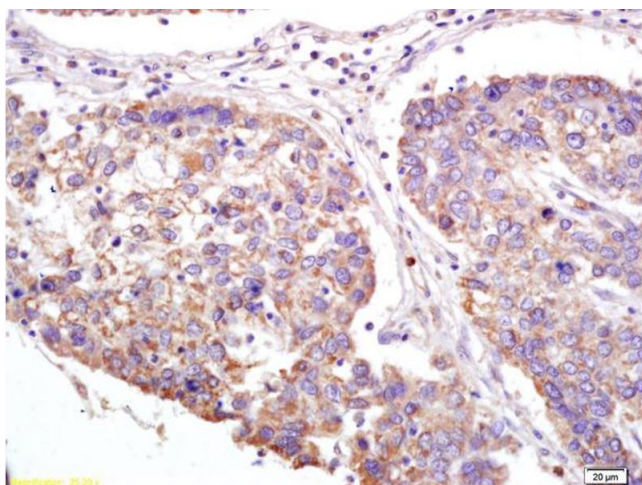
## Handling

Format:	Liquid
Concentration:	1 µg/µL
Buffer:	0.01M TBS( pH 7.4) with 1 % BSA, 0.02 % Proclin300 and 50 % Glycerol.
Preservative:	ProClin
Precaution of Use:	This product contains ProClin: a POISONOUS AND HAZARDOUS SUBSTANCE, which should be handled by trained staff only.
Storage:	4 °C,-20 °C
Storage Comment:	Shipped at 4°C. Store at -20°C for one year. Avoid repeated freeze/thaw cycles.
Expiry Date:	12 months



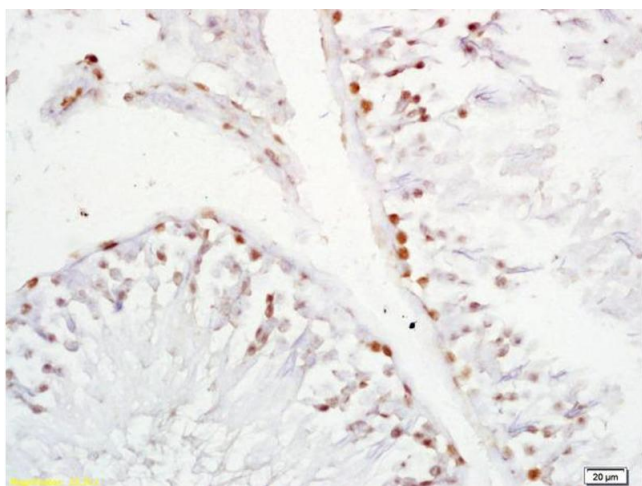
#### Immunohistochemistry

**Image 1.** Formalin-fixed and paraffin embedded human colon carcinoma labeled with Anti-XAGE2 Polyclonal Antibody, Unconjugated (ABIN721750) at 1:200 followed by conjugation to the secondary antibody and DAB staining.



#### Immunohistochemistry

**Image 2.** Formalin-fixed and paraffin embedded human lung carcinoma labeled with Anti-XAGE2 Polyclonal Antibody, Unconjugated (ABIN721750) at 1:200 followed by conjugation to the secondary antibody and DAB staining.



#### Immunohistochemistry

**Image 3.** Formalin-fixed and paraffin embedded rat testis labeled with Anti-XAGE2 Polyclonal Antibody, Unconjugated (ABIN721750) at 1:200 followed by conjugation to the secondary antibody and DAB staining.