

Datasheet for ABIN7217641  
**anti-METTL3 antibody (AA 140-220)**



[Go to Product page](#)

1 Image

## Overview

Quantity:	200 µL
Target:	METTL3
Binding Specificity:	AA 140-220
Reactivity:	Human, Rat, Mouse
Host:	Rabbit
Clonality:	Polyclonal
Conjugate:	This METTL3 antibody is un-conjugated
Application:	Western Blotting (WB), ELISA

## Product Details

Purpose:	M6A Polyclonal Antibody
Immunogen:	Synthesized peptide derived from the Internal region of human M6A at AA range: 140-220
Isotype:	IgG
Specificity:	M6A Polyclonal Antibody detects endogenous levels of M6A protein.
Purification:	The antibody was affinity-purified from rabbit antiserum by affinity-chromatography using epitope-specific immunogen

## Target Details

Target:	METTL3
Alternative Name:	M6A ( <a href="#">METTL3 Products</a> )

## Target Details

---

Background:	Rabbit Anti-M6A Polyclonal Antibody,GPM6A, M6A, Neuronal membrane glycoprotein M6-a, M6a,GPM6A (Glycoprotein M6A) is a Protein Coding gene. Gene Ontology (GO) annotations related to this gene include calcium channel activity. An important paralog of this gene is PLP1. Involved in neuronal differentiation, including differentiation and migration of neuronal stem cells. Plays a role in neuronal plasticity and is involved in neurite and filopodia outgrowth, filopodia motility and probably synapse formation. GPM6A-induced filopodia formation involves mitogen-activated protein kinase (MAPK) and Src signaling pathways. May be involved in neuronal NGF-dependent Ca(2+) influx. May be involved in regulation of endocytosis and intracellular trafficking of G-protein-coupled receptors (GPCRs), enhances internalization and recycling of mu-type opioid receptor.,Neuronal membrane glycoprotein M6-a
Molecular Weight:	observerd band 31kDa
Gene ID:	2823
UniProt:	<a href="#">P51674</a>

## Application Details

---

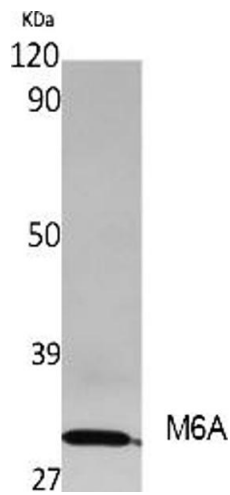
Application Notes:	Optimal working dilutions should be determined experimentally by the investigator. Suggested starting dilutions are as follows: WB (1:500-1:2000), ELISA (1:5000). Not yet tested in other applications.
Comment:	Primary Antibody
Restrictions:	For Research Use only

## Handling

---

Format:	Liquid
Concentration:	1 mg/mL
Buffer:	PBS containing 50 % Glycerol, 0.5 % BSA and 0.02 % Sodium Azide.
Preservative:	Sodium azide
Precaution of Use:	This product contains Sodium azide: a POISONOUS AND HAZARDOUS SUBSTANCE which should be handled by trained staff only.
Storage:	-20 °C
Storage Comment:	Stable for one year at -20°C from date of shipment. For maximum recovery of product, centrifuge the original vial after thawing and prior to removing the cap. Aliquot to avoid

repeated freezing and thawing.



#### Western Blotting

**Image 1.** Western Blot analysis of extracts from rat stomach, using M6A Polyclonal Antibody. Secondary antibody (ABIN7205155) was diluted at 1:20000.