

Datasheet for ABIN7217742  
**anti-NEFL antibody (C-Term)**[Go to Product page](#)

## 2 Images

## Overview

Quantity:	100 µL
Target:	NEFL
Binding Specificity:	C-Term
Reactivity:	Human, Rat, Mouse
Host:	Rabbit
Clonality:	Polyclonal
Conjugate:	This NEFL antibody is un-conjugated
Application:	Western Blotting (WB), Immunofluorescence (IF), ELISA, Immunohistochemistry (Paraffin-embedded Sections) (IHC (p))

## Product Details

Purpose:	NF-L Polyclonal Antibody
Immunogen:	Synthesized peptide derived from the C-terminal region of human NF-L
Isotype:	IgG
Specificity:	NF-L Polyclonal Antibody detects endogenous levels of NF-L protein.
Purification:	The antibody was affinity-purified from rabbit antiserum by affinity-chromatography using epitope-specific immunogen

## Target Details

Target:	NEFL
---------	------

## Target Details

Alternative Name:	NF-L ( <a href="#">NEFL Products</a> )
Background:	<p>Rabbit Anti-NF-L Polyclonal Antibody, NEFL, NF68, NFL, Neurofilament light polypeptide, NF-L, 68 kDa neurofilament protein, Neurofilament triplet L protein, Neurofilaments are type IV intermediate filament heteropolymers composed of light, medium, and heavy chains. Neurofilaments comprise the axoskeleton and they functionally maintain the neuronal caliber. They may also play a role in intracellular transport to axons and dendrites. This gene encodes the light chain neurofilament protein. Mutations in this gene cause Charcot-Marie-Tooth disease types 1F (CMT1F) and 2E (CMT2E), disorders of the peripheral nervous system that are characterized by distinct neuropathies. A pseudogene has been identified on chromosome Y., Neurofilament light polypeptide</p>
Molecular Weight:	observerd band 61kDa
Gene ID:	4747
UniProt:	<a href="#">P07196</a>

## Application Details

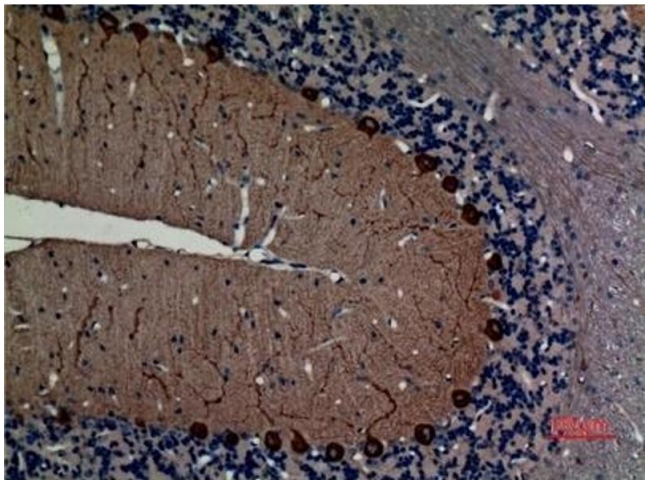
Application Notes:	Optimal working dilutions should be determined experimentally by the investigator. Suggested starting dilutions are as follows: WB (1:500-1:2000), IHC-P (1:100-1:300), ELISA (1:40000), IF(1:50-200). Not yet tested in other applications.
Comment:	Primary Antibody
Restrictions:	For Research Use only

## Handling

Format:	Liquid
Concentration:	1 mg/mL
Buffer:	PBS containing 50 % Glycerol, 0.5 % BSA and 0.02 % Sodium Azide.
Preservative:	Sodium azide
Precaution of Use:	This product contains Sodium azide: a POISONOUS AND HAZARDOUS SUBSTANCE which should be handled by trained staff only.
Storage:	-20 °C
Storage Comment:	Stable for one year at -20°C from date of shipment. For maximum recovery of product, centrifuge the original vial after thawing and prior to removing the cap. Aliquot to avoid

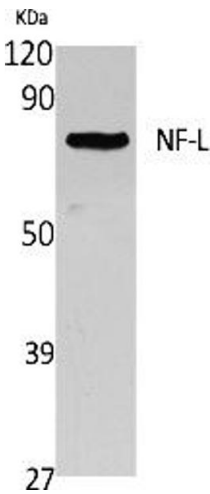
repeated freezing and thawing.

Images



Immunohistochemistry

**Image 1.** Immunohistochemical analysis of paraffin-embedded rat-brain, antibody was diluted at 1:100.



Western Blotting

**Image 2.** Western Blot analysis of extracts from Jurkat cells, using NF-L Polyclonal Antibody. Secondary antibody (ABIN7205155) was diluted at 1:20000.