

Datasheet for ABIN7218010
anti-Transferrin antibody (C-Term)



[Go to Product page](#)

3 Images

Overview

Quantity:	100 µL
Target:	Transferrin (TF)
Binding Specificity:	C-Term
Reactivity:	Human, Rat, Mouse
Host:	Rabbit
Clonality:	Polyclonal
Conjugate:	This Transferrin antibody is un-conjugated
Application:	Western Blotting (WB), ELISA, Immunohistochemistry (Paraffin-embedded Sections) (IHC (p))

Product Details

Purpose:	Transferrin Polyclonal Antibody
Immunogen:	Synthesized peptide derived from the C-terminal region of human Transferrin
Isotype:	IgG
Specificity:	Transferrin Polyclonal Antibody detects endogenous levels of Transferrin protein.
Purification:	The antibody was affinity-purified from rabbit antiserum by affinity-chromatography using epitope-specific immunogen

Target Details

Target:	Transferrin (TF)
Alternative Name:	Transferrin (TF Products)

Target Details

Background: Rabbit Anti-Transferrin Polyclonal Antibody,TF, Serotransferrin, Transferrin, Beta-1 metal-binding globulin, Siderophilin,TF encodes a glycoprotein with an approximate molecular weight of 76. kDa. It is thought to have been created as a result of an ancient gene duplication event that led to generation of homologous C and N-terminal domains each of which binds one ion of ferric iron. The function of this protein is to transport iron from the intestine, reticuloendothelial system, and liver parenchymal cells to all proliferating cells in the body. Serotransferrin may also have a physiologic role as granulocyte/pollen-binding protein (GPBP) involved in the removal of certain organic matter and allergens from serum.,Serotransferrin

Molecular Weight: observed band 77kDa

Gene ID: 7018

UniProt: [P02787](#)

Pathways: [Transition Metal Ion Homeostasis](#)

Application Details

Application Notes: Optimal working dilutions should be determined experimentally by the investigator. Suggested starting dilutions are as follows: WB (1:500-1:2000), IHC-P (1:100-1:300), ELISA (1:20000). Not yet tested in other applications.

Comment: Primary Antibody

Restrictions: For Research Use only

Handling

Format: Liquid

Concentration: 1 mg/mL

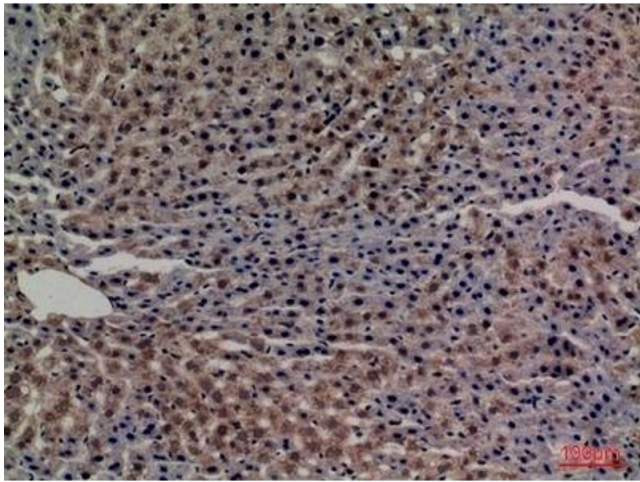
Buffer: PBS containing 50 % Glycerol, 0.5 % BSA and 0.02 % Sodium Azide.

Preservative: Sodium azide

Precaution of Use: This product contains Sodium azide: a POISONOUS AND HAZARDOUS SUBSTANCE which should be handled by trained staff only.

Storage: -20 °C

Storage Comment: Stable for one year at -20°C from date of shipment. For maximum recovery of product, centrifuge the original vial after thawing and prior to removing the cap. Aliquot to avoid repeated freezing and thawing.



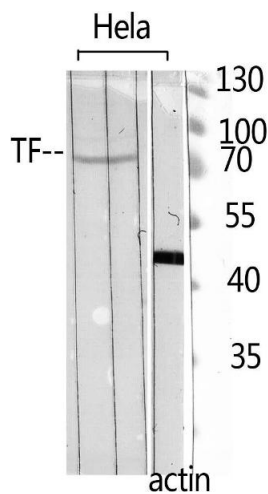
Immunohistochemistry

Image 1. Immunohistochemical analysis of paraffin-embedded rat-liver, antibody was diluted at 1:100.



Western Blotting

Image 2. Western Blot analysis of K562 cells using Transferrin Polyclonal Antibody. Antibody was diluted at 1:500. Secondary antibody (ABIN7205155) was diluted at 1:20000.



Western Blotting

Image 3. Western Blot analysis of hela using TF Polyclonal Antibody. Antibody was diluted at 1:500. Secondary antibody (ABIN7205155) was diluted at 1:20000.