

Datasheet for ABIN7218038
anti-CD58 antibody (Internal Region)



[Go to Product page](#)

6 Images

Overview

Quantity:	100 µL
Target:	CD58
Binding Specificity:	Internal Region
Reactivity:	Human
Host:	Rabbit
Clonality:	Polyclonal
Conjugate:	This CD58 antibody is un-conjugated
Application:	Western Blotting (WB), ELISA, Immunohistochemistry (Paraffin-embedded Sections) (IHC (p))

Product Details

Purpose:	CD58 Polyclonal Antibody
Immunogen:	Synthesized peptide derived from the Internal region of human CD58
Isotype:	IgG
Specificity:	CD58 Polyclonal Antibody detects endogenous levels of CD58 protein.
Purification:	The antibody was affinity-purified from rabbit antiserum by affinity-chromatography using epitope-specific immunogen

Target Details

Target:	CD58
Alternative Name:	CD58 (CD58 Products)

Target Details

Background: Rabbit Anti-CD58 Polyclonal Antibody, CD58, LFA3, Lymphocyte function-associated antigen 3, Ag3, Surface glycoprotein LFA-3, CD58, CD58 encodes a member of the immunoglobulin superfamily. The CD58 Molecule is a ligand of the T lymphocyte CD2 protein, and functions in adhesion and activation of T lymphocytes. The protein is localized to the plasma membrane. Alternatively spliced transcript variants have been described., Lymphocyte function-associated antigen 3

Molecular Weight: observed band 27kDa

Gene ID: 965

UniProt: [P19256](#)

Application Details

Application Notes: Optimal working dilutions should be determined experimentally by the investigator. Suggested starting dilutions are as follows: WB (1:500-1:2000), IHC-P (1:100-1:300), ELISA (1:20000). Not yet tested in other applications.

Comment: Primary Antibody

Restrictions: For Research Use only

Handling

Format: Liquid

Concentration: 1 mg/mL

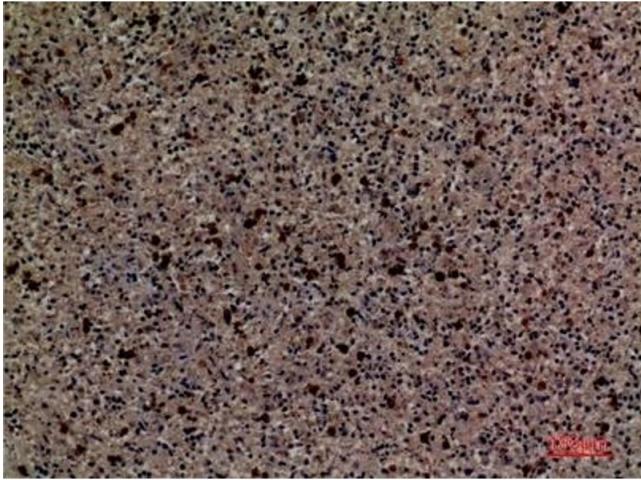
Buffer: PBS containing 50 % Glycerol, 0.5 % BSA and 0.02 % Sodium Azide.

Preservative: Sodium azide

Precaution of Use: This product contains Sodium azide: a POISONOUS AND HAZARDOUS SUBSTANCE which should be handled by trained staff only.

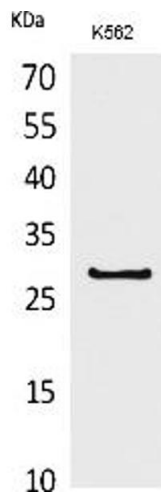
Storage: -20 °C

Storage Comment: Stable for one year at -20°C from date of shipment. For maximum recovery of product, centrifuge the original vial after thawing and prior to removing the cap. Aliquot to avoid repeated freezing and thawing.



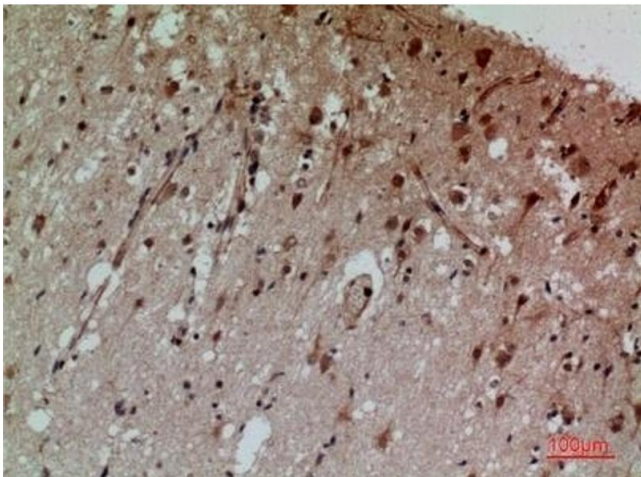
Immunohistochemistry

Image 1. Immunohistochemical analysis of paraffin-embedded human-spleen, antibody was diluted at 1:100.



Western Blotting

Image 2. Western Blot analysis of K562 cells using CD58 Polyclonal Antibody. Secondary antibody (ABIN7205155) was diluted at 1:20000.



Immunohistochemistry

Image 3. Immunohistochemical analysis of paraffin-embedded human-brain, antibody was diluted at 1:100.

Please check the [product details page](#) for more images. Overall 6 images are available for ABIN7218038.