

Datasheet for ABIN7218152
anti-CMTM6 antibody (C-Term)



[Go to Product page](#)

4 Images

Overview

Quantity:	100 µL
Target:	CMTM6
Binding Specificity:	C-Term
Reactivity:	Human
Host:	Rabbit
Clonality:	Polyclonal
Conjugate:	This CMTM6 antibody is un-conjugated
Application:	Western Blotting (WB), ELISA, Immunohistochemistry (Paraffin-embedded Sections) (IHC (p))

Product Details

Purpose:	CMTM6 Polyclonal Antibody
Immunogen:	Synthesized peptide derived from the C-terminal region of human CMTM6
Isotype:	IgG
Specificity:	CMTM6 Polyclonal Antibody detects endogenous levels of CMTM6 protein.
Purification:	The antibody was affinity-purified from rabbit antiserum by affinity-chromatography using epitope-specific immunogen

Target Details

Target:	CMTM6
Alternative Name:	CMTM6 (CMTM6 Products)

Target Details

Background: Rabbit Anti-CMTM6 Polyclonal Antibody, CMTM6, CKLFSF6, CKLF-like MARVEL transmembrane domain-containing protein 6, Chemokine-like factor superfamily member 6, CMTM6 belongs to the chemokine-like factor gene superfamily, a novel family that is similar to the chemokine and transmembrane 4 superfamilies. This gene is one of several chemokine-like factor genes located in a cluster on chromosome 3. This gene is widely expressed in many tissues, but the exact function of the encoded protein is unknown., CKLF-like MARVEL transmembrane domain-containing protein 6

Molecular Weight: observed band 20kDa

Gene ID: 54918

UniProt: [Q9NX76](#)

Application Details

Application Notes: Optimal working dilutions should be determined experimentally by the investigator. Suggested starting dilutions are as follows: WB (1:500-1:2000), IHC-P (1:100-1:300), ELISA (1:20000). Not yet tested in other applications.

Comment: Primary Antibody

Restrictions: For Research Use only

Handling

Format: Liquid

Concentration: 1 mg/mL

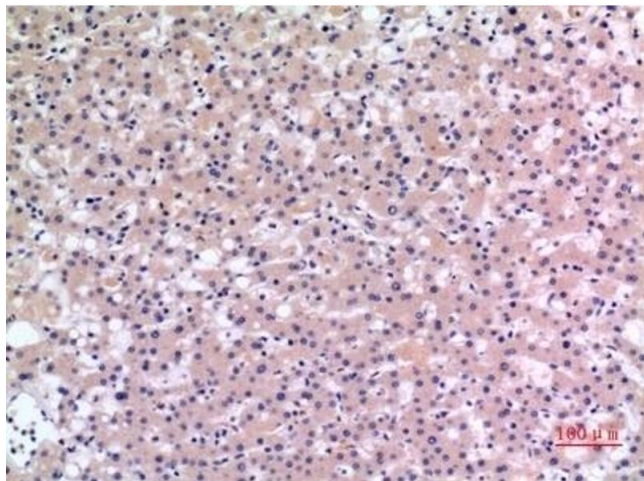
Buffer: PBS containing 50 % Glycerol, 0.5 % BSA and 0.02 % Sodium Azide.

Preservative: Sodium azide

Precaution of Use: This product contains Sodium azide: a POISONOUS AND HAZARDOUS SUBSTANCE which should be handled by trained staff only.

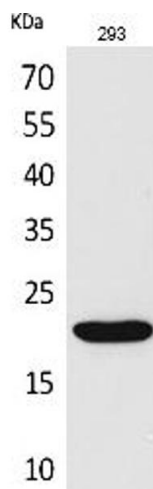
Storage: -20 °C

Storage Comment: Stable for one year at -20°C from date of shipment. For maximum recovery of product, centrifuge the original vial after thawing and prior to removing the cap. Aliquot to avoid repeated freezing and thawing.



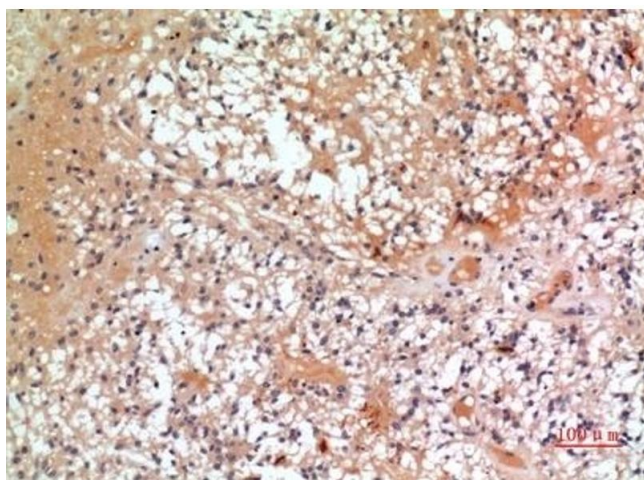
Immunohistochemistry

Image 1. Immunohistochemical analysis of paraffin-embedded human-liver, antibody was diluted at 1:100.



Western Blotting

Image 2. Western Blot analysis of 293 cells using CMTM6 Polyclonal Antibody. Secondary antibody (ABIN7205155) was diluted at 1:20000.



Immunohistochemistry

Image 3. Immunohistochemical analysis of paraffin-embedded human-oophoroma, antibody was diluted at 1:100.

Please check the [product details page](#) for more images. Overall 4 images are available for ABIN7218152.