

Datasheet for ABIN7218328
anti-JAG1 antibody (Internal Region)



[Go to Product page](#)

5 Images

Overview

Quantity:	100 µL
Target:	JAG1
Binding Specificity:	Internal Region
Reactivity:	Human, Mouse, Rat
Host:	Rabbit
Clonality:	Polyclonal
Conjugate:	This JAG1 antibody is un-conjugated
Application:	Western Blotting (WB), ELISA, Immunofluorescence (IF), Immunohistochemistry (Paraffin-embedded Sections) (IHC (p))

Product Details

Purpose:	Jagged1 Polyclonal Antibody
Immunogen:	Synthesized peptide derived from the Internal region of human Jagged1
Isotype:	IgG
Specificity:	Jagged1 Polyclonal Antibody detects endogenous levels of Jagged1 protein.
Purification:	The antibody was affinity-purified from rabbit antiserum by affinity-chromatography using epitope-specific immunogen

Target Details

Target:	JAG1
---------	------

Target Details

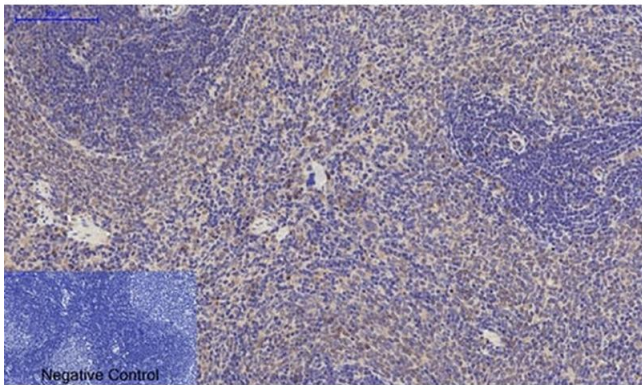
Alternative Name:	Jagged1 (JAG1 Products)
Background:	Rabbit Anti-Jagged1 Polyclonal Antibody, JAG1, JAGL1, Protein jagged-1, Jagged1, hJ1, CD339, The jagged 1 protein encoded by JAG1 is the human homolog of the Drosophila jagged protein. Human jagged 1 is the ligand for the receptor notch 1, the latter a human homolog of the Drosophila jagged receptor notch. Mutations that alter the jagged 1 protein cause Alagille syndrome. Jagged 1 signalling through notch 1 has also been shown to play a role in hematopoiesis. Protein jagged-1
Molecular Weight:	observed band 140kDa
Gene ID:	182
UniProt:	P78504
Pathways:	Notch Signaling , Stem Cell Maintenance

Application Details

Application Notes:	Optimal working dilutions should be determined experimentally by the investigator. Suggested starting dilutions are as follows: WB (1:500-1:2000), IHC-P (1:100-1:300), ELISA (1:20000). Not yet tested in other applications.
Comment:	Primary Antibody
Restrictions:	For Research Use only

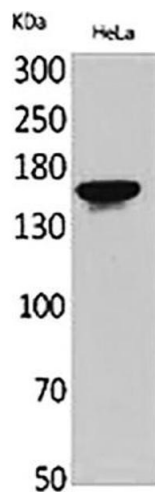
Handling

Format:	Liquid
Concentration:	1 mg/mL
Buffer:	PBS containing 50 % Glycerol, 0.5 % BSA and 0.02 % Sodium Azide.
Preservative:	Sodium azide
Precaution of Use:	This product contains Sodium azide: a POISONOUS AND HAZARDOUS SUBSTANCE which should be handled by trained staff only.
Storage:	-20 °C
Storage Comment:	Stable for one year at -20°C from date of shipment. For maximum recovery of product, centrifuge the original vial after thawing and prior to removing the cap. Aliquot to avoid repeated freezing and thawing.



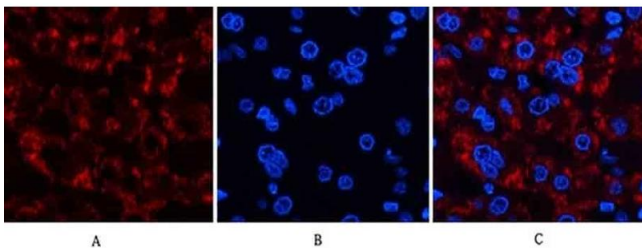
Immunohistochemistry

Image 1. Immunohistochemical analysis of paraffin-embedded rat spleen tissue. 1, Jagged1 Polyclonal Antibody was diluted at 1:200 (4 °C, overnight). 2, Sodium citrate pH 6.0 was used for antibody retrieval (>98 °C, 20 min). 3, secondary antibody was diluted at 1:200 (room temperature, 30 min). Negative control was used by secondary antibody only.



Western Blotting

Image 2. Western Blot analysis of HeLa cells using Jagged1 Polyclonal Antibody.



Immunofluorescence

Image 3. Immunofluorescence analysis of human liver tissue. 1, Jagged1 Polyclonal Antibody (red) was diluted at 1:200 (4 °C, overnight). 2, Cy3 Labeled secondary antibody was diluted at 1:300 (room temperature, 50 min). 3, Picture B: DAPI (blue) 10 min. Picture A: Target. Picture B: DAPI. Picture C: merge of A+B.

Please check the [product details page](#) for more images. Overall 5 images are available for ABIN7218328.