

Datasheet for ABIN7218552
anti-Pleiotrophin antibody (Internal Region)



[Go to Product page](#)

5 Images

Overview

Quantity:	100 µL
Target:	Pleiotrophin (PTN)
Binding Specificity:	Internal Region
Reactivity:	Human, Mouse, Rat
Host:	Rabbit
Clonality:	Polyclonal
Conjugate:	This Pleiotrophin antibody is un-conjugated
Application:	Western Blotting (WB), ELISA, Immunohistochemistry (Paraffin-embedded Sections) (IHC (p))

Product Details

Purpose:	PTN Polyclonal Antibody
Immunogen:	Synthesized peptide derived from the Internal region of human PTN
Isotype:	IgG
Specificity:	PTN Polyclonal Antibody detects endogenous levels of PTN protein.
Purification:	The antibody was affinity-purified from rabbit antiserum by affinity-chromatography using epitope-specific immunogen

Target Details

Target:	Pleiotrophin (PTN)
Alternative Name:	PTN (PTN Products)

Target Details

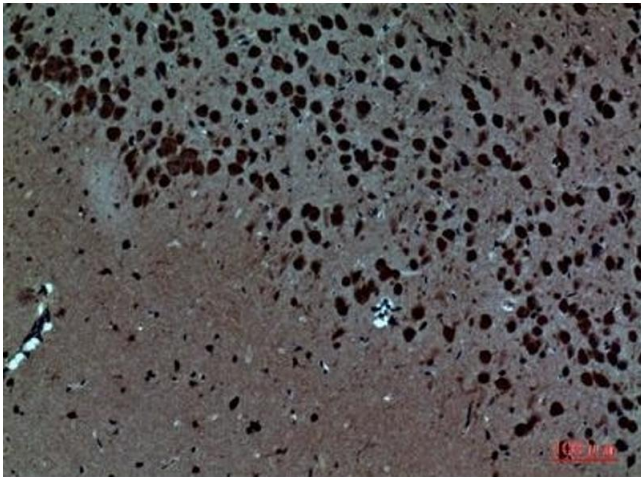
Background:	Rabbit Anti-PTN Polyclonal Antibody,PTN, HBNF1, NEGF1, Pleiotrophin, PTN, Heparin-binding brain mitogen, HBBM, Heparin-binding growth factor 8, HBGF-8, Heparin-binding growth-associated molecule, HB-GAM, Heparin-binding neurite outgrowth-promoting factor 1, HBNF-1, Osteoblast-specific facto,Heparin binding mitogenic protein. Has neurite extension activity.,Pleiotrophin
Molecular Weight:	observerd band 19kDa
Gene ID:	5764
UniProt:	P21246
Pathways:	RTK Signaling

Application Details

Application Notes:	Optimal working dilutions should be determined experimentally by the investigator. Suggested starting dilutions are as follows: WB (1:500-1:2000), IHC-P (1:100-1:300), ELISA (1:20000). Not yet tested in other applications.
Comment:	Primary Antibody
Restrictions:	For Research Use only

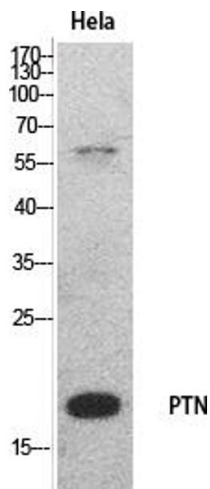
Handling

Format:	Liquid
Concentration:	1 mg/mL
Buffer:	PBS containing 50 % Glycerol, 0.5 % BSA and 0.02 % Sodium Azide.
Preservative:	Sodium azide
Precaution of Use:	This product contains Sodium azide: a POISONOUS AND HAZARDOUS SUBSTANCE which should be handled by trained staff only.
Storage:	-20 °C
Storage Comment:	Stable for one year at -20°C from date of shipment. For maximum recovery of product, centrifuge the original vial after thawing and prior to removing the cap. Aliquot to avoid repeated freezing and thawing.



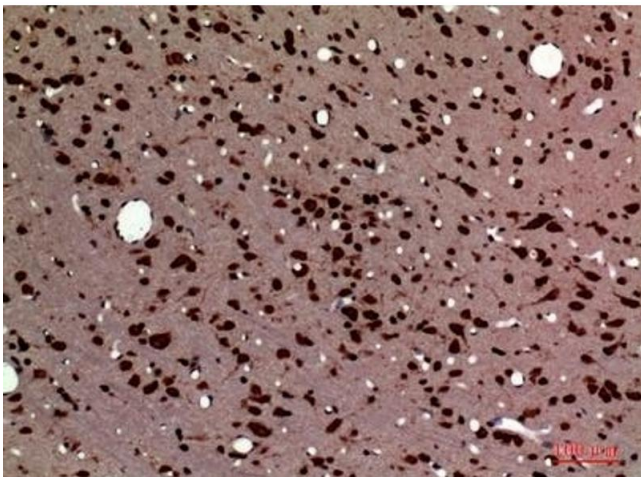
Immunohistochemistry

Image 1. Immunohistochemical analysis of paraffin-embedded Mouse-brain, antibody was diluted at 1:100.



Western Blotting

Image 2. Western Blot analysis of hela cells using PTN Polyclonal Antibody. Secondary antibody (ABIN7205155) was diluted at 1:20000.



Immunohistochemistry

Image 3. Immunohistochemical analysis of paraffin-embedded rat-brain, antibody was diluted at 1:100.

Please check the [product details page](#) for more images. Overall 5 images are available for ABIN7218552.