

Datasheet for ABIN7218612  
**anti-M-CSF/CSF1 antibody (C-Term)**



[Go to Product page](#)

6 Images

## Overview

Quantity:	100 µL
Target:	M-CSF/CSF1 (CSF1)
Binding Specificity:	C-Term
Reactivity:	Human
Host:	Rabbit
Clonality:	Polyclonal
Conjugate:	This M-CSF/CSF1 antibody is un-conjugated
Application:	Western Blotting (WB), ELISA, Immunohistochemistry (Paraffin-embedded Sections) (IHC (p))

## Product Details

Purpose:	M-CSF Polyclonal Antibody
Immunogen:	Synthesized peptide derived from the C-terminal region of human M-CSF
Isotype:	IgG
Specificity:	M-CSF Polyclonal Antibody detects endogenous levels of M-CSF protein.
Purification:	The antibody was affinity-purified from rabbit antiserum by affinity-chromatography using epitope-specific immunogen

## Target Details

Target:	M-CSF/CSF1 (CSF1)
Alternative Name:	M-CSF ( <a href="#">CSF1 Products</a> )

## Target Details

---

**Background:** Rabbit Anti-M-CSF Polyclonal Antibody, CSF1, Macrophage colony-stimulating factor 1, CSF-1, M-CSF, MCSF, Lanimostim, Macrophage colony-stimulating factor 1 encoded by CSF1 is a cytokine that controls the production, differentiation, and function of macrophages. The active form of the protein is found extracellularly as a disulfide-linked homodimer, and is thought to be produced by proteolytic cleavage of membrane-bound precursors. The encoded protein may be involved in development of the placenta. Alternate splicing results in multiple transcript variants., Macrophage colony-stimulating factor 1

**Molecular Weight:** observed band 48kDa

**Gene ID:** 1435

**UniProt:** [P09603](#)

**Pathways:** [RTK Signaling](#)

## Application Details

---

**Application Notes:** Optimal working dilutions should be determined experimentally by the investigator. Suggested starting dilutions are as follows: WB (1:500-1:2000), IHC-P (1:100-1:300), ELISA (1:10000). Not yet tested in other applications.

**Comment:** Primary Antibody

**Restrictions:** For Research Use only

## Handling

---

**Format:** Liquid

**Concentration:** 1 mg/mL

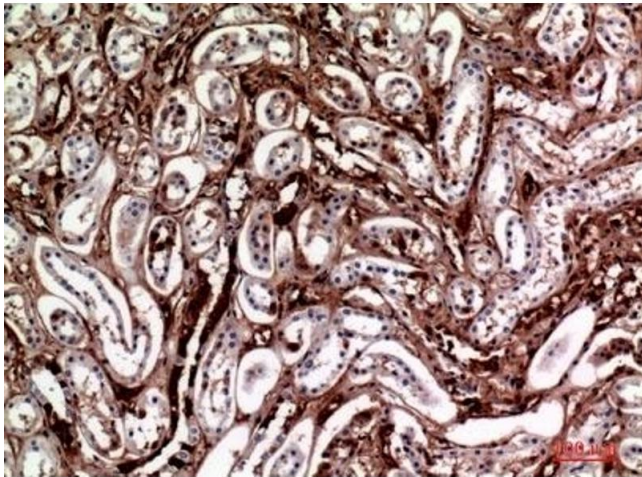
**Buffer:** PBS containing 50 % Glycerol, 0.5 % BSA and 0.02 % Sodium Azide.

**Preservative:** Sodium azide

**Precaution of Use:** This product contains Sodium azide: a POISONOUS AND HAZARDOUS SUBSTANCE which should be handled by trained staff only.

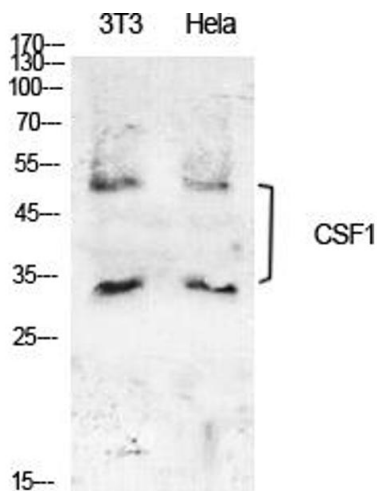
**Storage:** -20 °C

**Storage Comment:** Stable for one year at -20°C from date of shipment. For maximum recovery of product, centrifuge the original vial after thawing and prior to removing the cap. Aliquot to avoid repeated freezing and thawing.



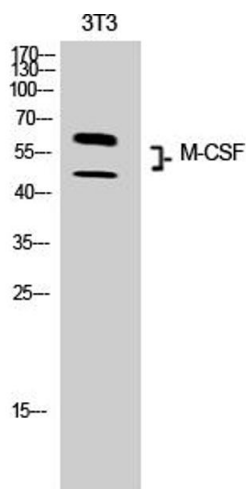
### Immunohistochemistry

**Image 1.** Immunohistochemical analysis of paraffin-embedded human-kidney, antibody was diluted at 1:100.



### Western Blotting

**Image 2.** Western Blot analysis of NIH-3T3, hela cells using M-CSF Polyclonal Antibody. Secondary antibody (ABIN7205155) was diluted at 1:20000.



### Western Blotting

**Image 3.** Western Blot analysis of 3T3 cells using M-CSF Polyclonal Antibody. Secondary antibody (ABIN7205155) was diluted at 1:20000.

Please check the [product details page](#) for more images. Overall 6 images are available for ABIN7218612.