

Datasheet for ABIN7218706
anti-ICAM2 antibody (Internal Region)



[Go to Product page](#)

1 Image

Overview

Quantity:	100 µL
Target:	ICAM2
Binding Specificity:	Internal Region
Reactivity:	Human
Host:	Rabbit
Clonality:	Polyclonal
Conjugate:	This ICAM2 antibody is un-conjugated
Application:	Western Blotting (WB), ELISA

Product Details

Purpose:	ICAM-2 Polyclonal Antibody
Immunogen:	Synthesized peptide derived from the Internal region of human ICAM-2
Isotype:	IgG
Specificity:	ICAM-2 Polyclonal Antibody detects endogenous levels of ICAM-2 protein.
Purification:	The antibody was affinity-purified from rabbit antiserum by affinity-chromatography using epitope-specific immunogen

Target Details

Target:	ICAM2
Alternative Name:	ICAM-2 (ICAM2 Products)

Target Details

Background: Rabbit Anti-ICAM-2 Polyclonal Antibody, ICAM2, Intercellular adhesion molecule 2, ICAM-2, CD102, The intercellular adhesion molecule 2 encoded by ICAM2 is a member of the intercellular adhesion molecule (ICAM) family. All ICAM proteins are type I transmembrane glycoproteins, contain 2-9 immunoglobulin-like C2-type domains, and bind to the leukocyte adhesion LFA-1 protein. This protein may play a role in lymphocyte recirculation by blocking LFA-1-dependent cell adhesion. It mediates adhesive interactions important for antigen-specific immune response, NK-cell mediated clearance, lymphocyte recirculation, and other cellular interactions important for immune response and surveillance. Several transcript variants encoding the same protein have been found for this gene., Intercellular adhesion molecule 2

Molecular Weight: observed band 30kDa

Gene ID: 3384

UniProt: [P13598](#)

Application Details

Application Notes: Optimal working dilutions should be determined experimentally by the investigator. Suggested starting dilutions are as follows: WB (1:500-1:2000), ELISA (1:10000). Not yet tested in other applications.

Comment: Primary Antibody

Restrictions: For Research Use only

Handling

Format: Liquid

Concentration: 1 mg/mL

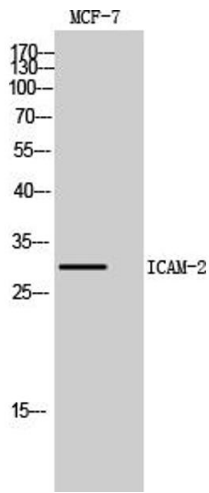
Buffer: PBS containing 50 % Glycerol, 0.5 % BSA and 0.02 % Sodium Azide.

Preservative: Sodium azide

Precaution of Use: This product contains Sodium azide: a POISONOUS AND HAZARDOUS SUBSTANCE which should be handled by trained staff only.

Storage: -20 °C

Storage Comment: Stable for one year at -20°C from date of shipment. For maximum recovery of product, centrifuge the original vial after thawing and prior to removing the cap. Aliquot to avoid repeated freezing and thawing.



Western Blotting

Image 1. Western Blot analysis of MCF7, HepG2 cells using ICAM-2 Polyclonal Antibody. Secondary antibody (ABIN7205155) was diluted at 1:20000.