

Datasheet for ABIN7219210  
**anti-STON1 antibody (AA 660-740)**[Go to Product page](#)

## 1 Image

## Overview

Quantity:	100 µL
Target:	STON1
Binding Specificity:	AA 660-740
Reactivity:	Human
Host:	Rabbit
Clonality:	Polyclonal
Conjugate:	This STON1 antibody is un-conjugated
Application:	Western Blotting (WB), ELISA, Immunofluorescence (IF), Immunohistochemistry (Paraffin-embedded Sections) (IHC (p))

## Product Details

Purpose:	Stonin-1 Polyclonal Antibody
Immunogen:	Synthesized peptide derived from the C-terminal region of human Stonin-1 at AA range: 660-740
Isotype:	IgG
Specificity:	Stonin-1 Polyclonal Antibody detects endogenous levels of Stonin-1 protein.
Purification:	The antibody was affinity-purified from rabbit antiserum by affinity-chromatography using epitope-specific immunogen

## Target Details

Target:	STON1
---------	-------

## Target Details

Alternative Name:	Stonin-1 ( <a href="#">STON1 Products</a> )
Background:	<p>Rabbit Anti-Stonin-1 Polyclonal Antibody, STON1, SALF, SBLF, STN1, Stonin-1, Stoned B-like factor, Endocytosis of cell surface proteins is mediated by a complex molecular machinery that assembles on the inner surface of the plasma membrane. STON1 encodes one of two human homologs of the Drosophila melanogaster stoned B protein. Stonin-1 is related to components of the endocytic machinery and exhibits a modular structure consisting of an N-terminal proline-rich domain, a central region of homology specific to the human stoned B-like proteins, and a C-terminal region homologous to the mu subunits of adaptor protein (AP) complexes. Read-through transcription of this gene into the neighboring downstream gene, which encodes TFIIA-alpha/beta-like factor, generates a transcript (SALF), which encodes a fusion protein comprised of sequence sharing identity with each individual gene product. Alternative splicing results in multiple transcript variants., Stonin-1</p>
Molecular Weight:	observed band 83kDa
Gene ID:	11037
UniProt:	<a href="#">Q9Y6Q2</a>

## Application Details

Application Notes:	Optimal working dilutions should be determined experimentally by the investigator. Suggested starting dilutions are as follows: WB (1:500-1:2000), IHC-P (1:100-1:300), IF (1:200-1:1000), ELISA (1:10000). Not yet tested in other applications.
Comment:	Primary Antibody
Restrictions:	For Research Use only

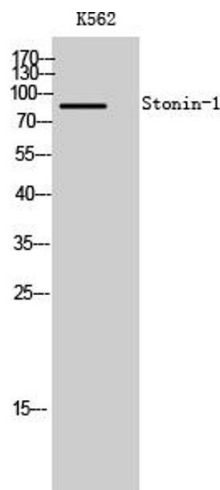
## Handling

Format:	Liquid
Concentration:	1 mg/mL
Buffer:	PBS containing 50 % Glycerol, 0.5 % BSA and 0.02 % Sodium Azide.
Preservative:	Sodium azide
Precaution of Use:	This product contains Sodium azide: a POISONOUS AND HAZARDOUS SUBSTANCE which should be handled by trained staff only.
Storage:	-20 °C

Handling

Storage Comment: Stable for one year at -20°C from date of shipment. For maximum recovery of product, centrifuge the original vial after thawing and prior to removing the cap. Aliquot to avoid repeated freezing and thawing.

Images



**Western Blotting**

**Image 1.** Western Blot analysis of K562 cells using Stonin-1 Polyclonal Antibody.