

Datasheet for ABIN7224802

anti-Tryptophan Hydroxylase 1 antibody[Go to Product page](#)**1** Image

Overview

Quantity:	100 µL
Target:	Tryptophan Hydroxylase 1 (TPH1)
Reactivity:	Human, Mouse, Rat
Host:	Rabbit
Clonality:	Polyclonal
Conjugate:	This Tryptophan Hydroxylase 1 antibody is un-conjugated
Application:	Western Blotting (WB), ELISA, Immunofluorescence (IF), Immunohistochemistry (Paraffin-embedded Sections) (IHC (p))

Product Details

Purpose:	TPH1 Polyclonal Antibody
Immunogen:	Synthesized peptide derived from human TPH1 around the non-phosphorylation site of S260
Isotype:	IgG
Specificity:	TPH1 Polyclonal Antibody detects endogenous levels of TPH1 protein.
Purification:	The antibody was affinity-purified from rabbit antiserum by affinity-chromatography using epitope-specific immunogen

Target Details

Target:	Tryptophan Hydroxylase 1 (TPH1)
Alternative Name:	TPH1 (TPH1 Products)

Target Details

Background: Rabbit Anti-TPH1 Polyclonal Antibody,TPH1, TPH, TPRH, TRPH, Tryptophan 5-hydroxylase 1, Tryptophan 5-monoxygenase 1,TPH1 (tryptophan hydroxylase 1) encodes a member of the aromatic amino acid hydroxylase family. The encoded protein catalyzes the first and rate limiting step in the biosynthesis of serotonin, an important hormone and neurotransmitter. Mutations in TPH1 have been associated with an elevated risk for a variety of diseases and disorders, including schizophrenia, somatic anxiety, anger-related traits, bipolar disorder, suicidal behavior, addictions, and others.,Tryptophan 5-hydroxylase 1

Molecular Weight: observed band 51kDa

Gene ID: 7166

UniProt: [P17752](#)

Pathways: [Feeding Behaviour](#)

Application Details

Application Notes: Optimal working dilutions should be determined experimentally by the investigator. Suggested starting dilutions are as follows: WB (1:500-1:2000), IHC-P (1:100-1:300), IF (1:200-1:1000), ELISA (1:20000). Not yet tested in other applications.

Comment: Primary Antibody

Restrictions: For Research Use only

Handling

Format: Liquid

Concentration: 1 mg/mL

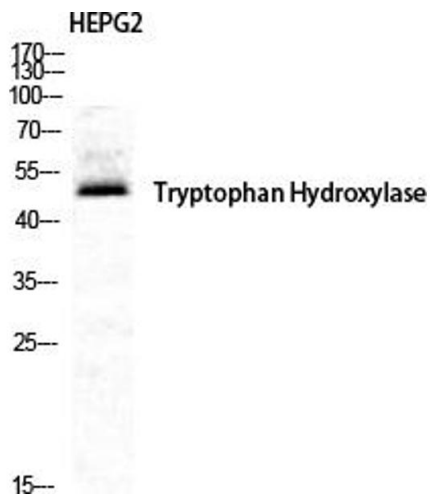
Buffer: PBS containing 50 % Glycerol, 0.5 % BSA and 0.02 % Sodium Azide.

Preservative: Sodium azide

Precaution of Use: This product contains Sodium azide: a POISONOUS AND HAZARDOUS SUBSTANCE which should be handled by trained staff only.

Storage: -20 °C

Storage Comment: Stable for one year at -20°C from date of shipment. For maximum recovery of product, centrifuge the original vial after thawing and prior to removing the cap. Aliquot to avoid repeated freezing and thawing.



Western Blotting

Image 1. Western Blot analysis of HepG2 cells using TPH1 Polyclonal Antibody diluted at 1:500. Secondary antibody was diluted at 1:20000.