

Datasheet for ABIN7226288

anti-SLUG antibody**2** Images[Go to Product page](#)

Overview

Quantity:	100 µL
Target:	SLUG
Reactivity:	Human, Rat, Mouse
Host:	Rabbit
Clonality:	Polyclonal
Conjugate:	This SLUG antibody is un-conjugated
Application:	Western Blotting (WB), Immunohistochemistry (Paraffin-embedded Sections) (IHC (p))

Product Details

Purpose:	SLUG Polyclonal Antibody
Immunogen:	Recombinant Protein
Isotype:	IgG
Specificity:	The antibody detects endogenous SLUG protein.
Purification:	The antibody was affinity-purified from rabbit antiserum by affinity-chromatography using epitope-specific immunogen

Target Details

Target:	SLUG
Abstract:	SLUG Products
Background:	Rabbit Anti-SLUG Polyclonal Antibody, SNAI2 (snail family transcriptional repressor 2) encodes

Target Details

a member of the Snail family of C2H2-type zinc finger transcription factors. The encoded protein acts as a transcriptional repressor that binds to E-box motifs and is also likely to repress E-cadherin transcription in breast carcinoma. This protein is involved in epithelial-mesenchymal transitions and has antiapoptotic activity. Mutations in SNAI2 may be associated with sporadic cases of neural tube defects.,Zinc finger protein SNAI2

Molecular Weight: observed band 30kDa

Gene ID: 6591

UniProt: [O43623](#)

Application Details

Application Notes: Optimal working dilutions should be determined experimentally by the investigator. Suggested starting dilutions are as follows: WB (1:500-1:1000), IHC-P (1:200-1:500).

Comment: Primary Antibody

Restrictions: For Research Use only

Handling

Format: Liquid

Concentration: 1 mg/mL

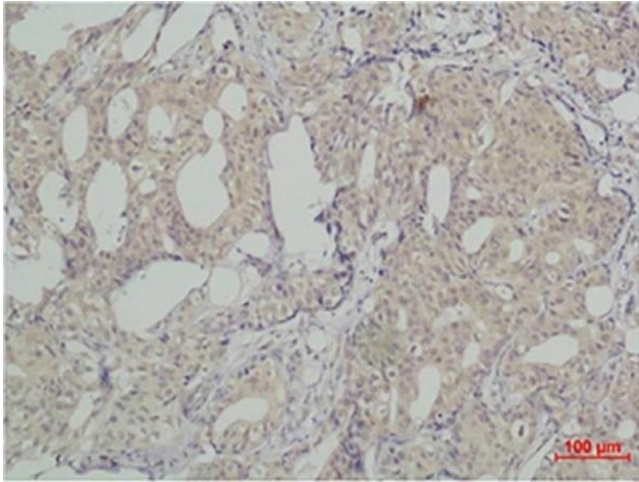
Buffer: PBS, pH 7.4, containing 0.02 % Sodium Azide as preservative and 50 % Glycerol.

Preservative: Sodium azide

Precaution of Use: This product contains Sodium azide: a POISONOUS AND HAZARDOUS SUBSTANCE which should be handled by trained staff only.

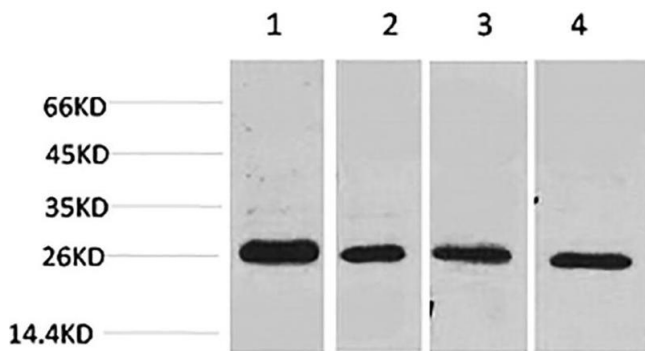
Storage: -20 °C

Storage Comment: Stable for one year at -20°C from date of shipment. For maximum recovery of product, centrifuge the original vial after thawing and prior to removing the cap. Aliquot to avoid repeated freezing and thawing.



Immunohistochemistry

Image 1. Immunohistochemical analysis of paraffin-embedded human breast carcinoma using SLUG Polyclonal Antibody.



Western Blotting

Image 2. Western blot analysis of 1) MCF7, 2) Mouse Heart tissue, 3) Rat Heart tissue, 4) rat brain tissue using SLUG Polyclonal Antibody.