

Datasheet for ABIN7226300
anti-LC3B antibody



[Go to Product page](#)

5 Images

Overview

Quantity:	100 µL
Target:	LC3B (MAP1LC3B)
Reactivity:	Human, Mouse, Rat
Host:	Rabbit
Clonality:	Polyclonal
Conjugate:	This LC3B antibody is un-conjugated
Application:	Western Blotting (WB), Immunofluorescence (IF), Immunohistochemistry (Paraffin-embedded Sections) (IHC (p))

Product Details

Purpose:	MAP LC3B Polyclonal Antibody
Immunogen:	Recombinant Protein
Isotype:	IgG
Specificity:	The antibody detects endogenous MAP LC3β protein.
Purification:	The antibody was affinity-purified from rabbit antiserum by affinity-chromatography using epitope-specific immunogen

Target Details

Target:	LC3B (MAP1LC3B)
Alternative Name:	MAP LC3B (MAP1LC3B Products)

Target Details

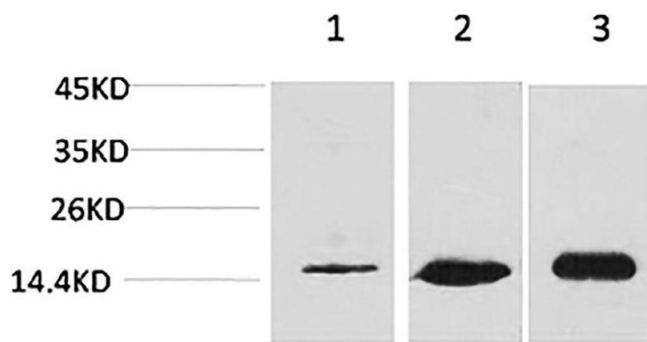
Background:	Rabbit Anti-MAP LC3B Polyclonal Antibody,The product of MAP1LC3B (microtubule associated protein 1 light chain 3 beta) is a subunit of neuronal microtubule-associated MAP1A and MAP1B proteins, which are involved in microtubule assembly and important for neurogenesis. Studies on the rat homolog implicate a role for MAP1LC3B in autophagy, a process that involves the bulk degradation of cytoplasmic component.,Microtubule-associated proteins 1A
Molecular Weight:	observerd band 14,16kDa
Gene ID:	81631
UniProt:	Q9GZQ8
Pathways:	Autophagy

Application Details

Application Notes:	Optimal working dilutions should be determined experimentally by the investigator. Suggested starting dilutions are as follows: WB (1:1000-1:2000), IHC-P (1:200-1:500).
Comment:	Primary Antibody
Restrictions:	For Research Use only

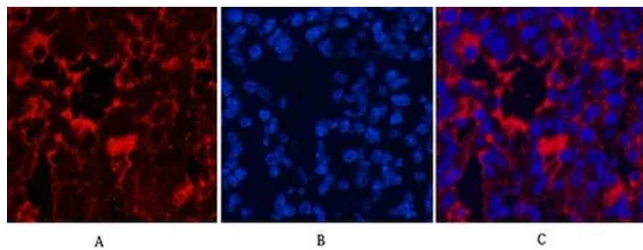
Handling

Format:	Liquid
Concentration:	1 mg/mL
Buffer:	PBS, pH 7.4, containing 0.02 % Sodium Azide as preservative and 50 % Glycerol.
Preservative:	Sodium azide
Precaution of Use:	This product contains Sodium azide: a POISONOUS AND HAZARDOUS SUBSTANCE which should be handled by trained staff only.
Storage:	-20 °C
Storage Comment:	Stable for one year at -20°C from date of shipment. For maximum recovery of product, centrifuge the original vial after thawing and prior to removing the cap. Aliquot to avoid repeated freezing and thawing.



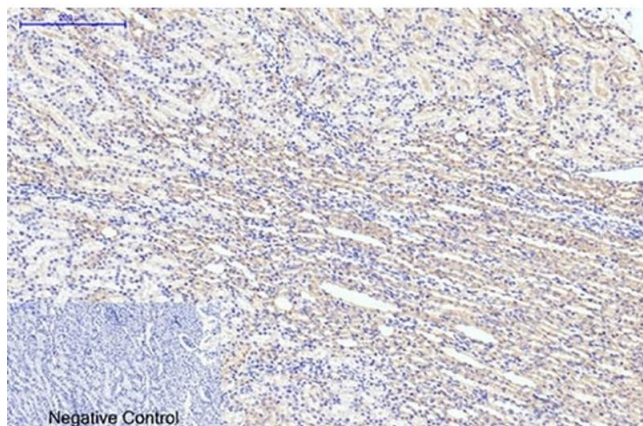
Western Blotting

Image 1. Western blot analysis of 1) HeLa, 2) 3T3, 3) rat brain tissue using MAP LC3 β Polyclonal Antibody.



Immunofluorescence

Image 2. Immunofluorescence analysis of mouse lung tissue. 1, LC3B Polyclonal Antibody (red) was diluted at 1:200 (4 °C, overnight). 2, Cy3 Labeled secondary antibody was diluted at 1:300 (room temperature, 50 min). 3, Picture B: DAPI (blue) 10 min. Picture A: Target. Picture B: DAPI. Picture C: merge of A+B.



Immunohistochemistry

Image 3. Immunohistochemical analysis of paraffin-embedded rat kidney tissue. 1, LC3B Polyclonal Antibody was diluted at 1:200 (4 °C, overnight). 2, Sodium citrate pH 6.0 was used for antibody retrieval (>98 °C, 20 min). 3, secondary antibody was diluted at 1:200 (room temperature, 30 min). Negative control was used by secondary antibody only.

Please check the [product details page](#) for more images. Overall 5 images are available for ABIN7226300.