

Datasheet for ABIN7226524

anti-SLC1A2 antibody[Go to Product page](#)**1** Image

Overview

Quantity:	100 µL
Target:	SLC1A2
Reactivity:	Human, Mouse, Rat
Host:	Rabbit
Clonality:	Polyclonal
Conjugate:	This SLC1A2 antibody is un-conjugated
Application:	Western Blotting (WB)

Product Details

Purpose:	EAAT2 Polyclonal Antibody
Immunogen:	Synthetic Peptide
Isotype:	IgG
Purification:	The antibody was affinity-purified from rabbit antiserum by affinity-chromatography using specific immunogen

Target Details

Target:	SLC1A2
Alternative Name:	EAAT2 (SLC1A2 Products)
Background:	Rabbit Anti-EAAT2 Polyclonal Antibody, SLC1A2 (solute carrier family 1 member 2) encodes a member of a family of solute transporter proteins. The membrane-bound protein is the principal transporter that clears the excitatory neurotransmitter glutamate from the extracellular space

Target Details

at synapses in the central nervous system. Glutamate clearance is necessary for proper synaptic activation and to prevent neuronal damage from excessive activation of glutamate receptors. Mutations in and decreased expression of this protein are associated with amyotrophic lateral sclerosis. Alternatively spliced transcript variants of SLC1A2 have been identified.,EAAT2

Molecular Weight: observed band 62kDa

Gene ID: 6506

UniProt: [P43004](#)

Pathways: [Dicarboxylic Acid Transport](#)

Application Details

Application Notes: Optimal working dilutions should be determined experimentally by the investigator. Suggested starting dilutions are as follows: WB (1:1000-1:2000).

Comment: Primary Antibody

Restrictions: For Research Use only

Handling

Format: Liquid

Concentration: 1 mg/mL

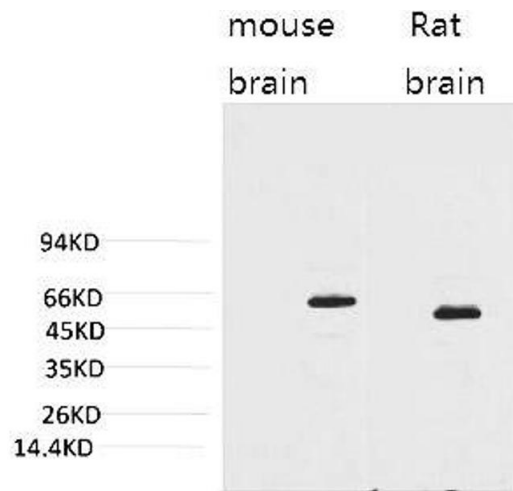
Buffer: PBS containing 50 % Glycerol, 0.5 % BSA and 0.02 % Sodium Azide.

Preservative: Sodium azide

Precaution of Use: This product contains Sodium azide: a POISONOUS AND HAZARDOUS SUBSTANCE which should be handled by trained staff only.

Storage: -20 °C

Storage Comment: Stable for one year at -20°C from date of shipment. For maximum recovery of product, centrifuge the original vial after thawing and prior to removing the cap. Aliquot to avoid repeated freezing and thawing.



Western Blotting

Image 1. Western blot analysis of 1) Mouse Brain Tissue, 2) Rat Brain Tissue with EAAT2 Rabbit pAb diluted at 1:2000.