

Datasheet for ABIN7226606
anti-MRPL35 antibody (AA 80-160)



[Go to Product page](#)

2 Images

Overview

Quantity:	100 µL
Target:	MRPL35
Binding Specificity:	AA 80-160
Reactivity:	Human, Mouse
Host:	Rabbit
Clonality:	Polyclonal
Conjugate:	This MRPL35 antibody is un-conjugated
Application:	Western Blotting (WB), ELISA

Product Details

Purpose:	MRP-L35 Polyclonal Antibody
Immunogen:	Synthesized peptide derived from the Internal region of human MRP-L35 at AA range: 80-160
Isotype:	IgG
Specificity:	MRP-L35 Polyclonal Antibody detects endogenous levels of MRP-L35 protein.
Purification:	The antibody was affinity-purified from rabbit antiserum by affinity-chromatography using epitope-specific immunogen

Target Details

Target:	MRPL35
Alternative Name:	MRP-L35 (MRPL35 Products)

Target Details

Background: Rabbit Anti-MRP-L35 Polyclonal Antibody,MRPL35, BM-007, 39S ribosomal protein L35, mitochondrial, L35mt, MRP-L35,Mammalian mitochondrial ribosomal proteins are encoded by nuclear genes and help in protein synthesis within the mitochondrion. Mitochondrial ribosomes(mitoribosomes) consist of a small 28S subunit and a large 39S subunit. They have an estimated 75 % protein to rRNA composition compared to prokaryotic ribosomes, where this ratio is reversed. Another difference between mammalian mitoribosomes and prokaryotic ribosomes is that the latter contain a 5S rRNA. Among different species, the proteins comprising the mitoribosome differ greatly in sequence, and sometimes in biochemical properties, which prevents easy recognition by sequence homology. MRPL35(mitochondrial ribosomal protein L35) encodes a 39S subunit protein. Sequence analysis identified three transcript variants. Pseudogenes corresponding to MRPL35 are found on chromosomes 6p, 10q, and Xp.,39S ribosomal protein L35 mitochondrial

Molecular Weight: observed band 21kDa

Gene ID: 51318

UniProt: [Q9NZE8](#)

Application Details

Application Notes: Optimal working dilutions should be determined experimentally by the investigator. Suggested starting dilutions are as follows: WB (1:500-1:2000), ELISA (1:10000). Not yet tested in other applications.

Comment: Primary Antibody

Restrictions: For Research Use only

Handling

Format: Liquid

Concentration: 1 mg/mL

Buffer: PBS containing 50 % Glycerol, 0.5 % BSA and 0.02 % Sodium Azide.

Preservative: Sodium azide

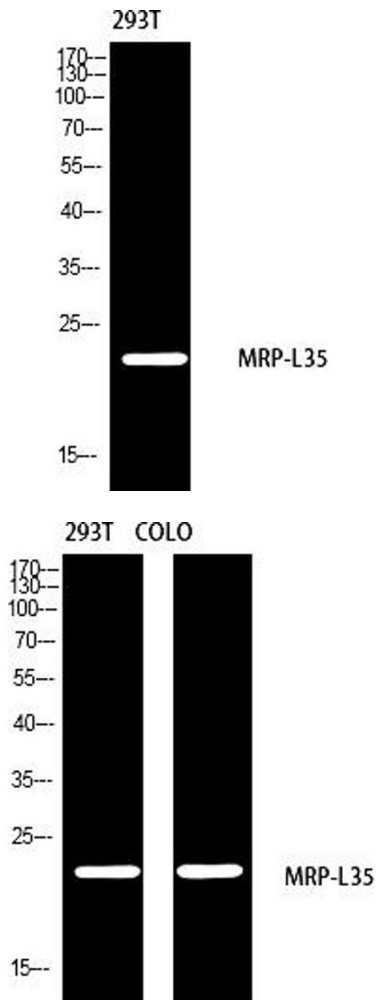
Precaution of Use: This product contains Sodium azide: a POISONOUS AND HAZARDOUS SUBSTANCE which should be handled by trained staff only.

Storage: -20 °C

Handling

Storage Comment: Stable for one year at -20°C from date of shipment. For maximum recovery of product, centrifuge the original vial after thawing and prior to removing the cap. Aliquot to avoid repeated freezing and thawing.

Images



Western Blotting

Image 1. Western blot analysis of 293 using MRP-L35 antibody. Antibody was diluted at 1:2000. Secondary antibody (ABIN7205155) was diluted at 1:20000.

Western Blotting

Image 2. Western blot analysis of 293T COLO using MRP-L35 antibody. Antibody was diluted at 1:2000. Secondary antibody (ABIN7205155) was diluted at 1:20000.