

Datasheet for ABIN7226858

anti-Collagen Type I antibody (AA 1200-1217)[Go to Product page](#)**1** Image

Overview

Quantity:	100 µL
Target:	Collagen Type I (COL1)
Binding Specificity:	AA 1200-1217
Reactivity:	Human, Rat, Mouse
Host:	Rabbit
Clonality:	Polyclonal
Conjugate:	This Collagen Type I antibody is un-conjugated
Application:	Western Blotting (WB), ELISA

Product Details

Purpose:	Collagen I Polyclonal Antibody
Immunogen:	Synthesized peptide derived from Collagen I at AA range: 1200-1217
Isotype:	IgG
Specificity:	Collagen I Polyclonal Antibody detects endogenous levels of Collagen I.
Purification:	The antibody was affinity-purified from rabbit antiserum by affinity-chromatography using epitope-specific immunogen

Target Details

Target:	Collagen Type I (COL1)
Alternative Name:	Collagen I (COL1 Products)

Target Details

Background: Rabbit Anti-Collagen I Polyclonal Antibody, collagen, type I, alpha 2, COL1A2 (collagen type I alpha 2 chain) encodes the pro-alpha2 chain of type I collagen whose triple helix comprises two alpha1 chains and one alpha2 chain. Type I is a fibril-forming collagen found in most connective tissues and is abundant in bone, cornea, dermis and tendon. Mutations in COL1A2 are associated with osteogenesis imperfecta types I-IV, Ehlers-Danlos syndrome type VIIB, recessive Ehlers-Danlos syndrome Classical type, idiopathic osteoporosis, and atypical Marfan syndrome. Symptoms associated with mutations in COL1A2, however, tend to be less severe than mutations in the gene for the alpha1 chain of type I collagen (COL1A1) reflecting the different role of alpha2 chains in matrix integrity. Three transcripts, resulting from the use of alternate polyadenylation signals, have been identified for COL1A2., Collagen I

Molecular Weight: observed band 135kDa

Gene ID: 1278

Application Details

Application Notes: Optimal working dilutions should be determined experimentally by the investigator. Suggested starting dilutions are as follows: WB (1:500-1:2000), ELISA (1:10000-1:20000).

Comment: Primary Antibody

Restrictions: For Research Use only

Handling

Format: Liquid

Concentration: 1 mg/mL

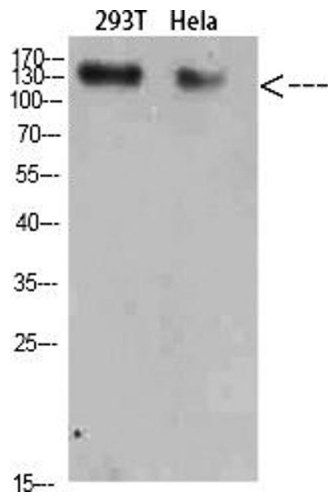
Buffer: PBS containing 50 % Glycerol, 0.5 % BSA and 0.02 % Sodium Azide.

Preservative: Sodium azide

Precaution of Use: This product contains Sodium azide: a POISONOUS AND HAZARDOUS SUBSTANCE which should be handled by trained staff only.

Storage: -20 °C

Storage Comment: Stable for one year at -20°C from date of shipment. For maximum recovery of product, centrifuge the original vial after thawing and prior to removing the cap. Aliquot to avoid repeated freezing and thawing.



Western Blotting

Image 1. Western Blot analysis of 293T HeLa cells using Collagen I Polyclonal Antibody diluted at 1:500. Secondary antibody (ABIN7205155) was diluted at 1:20000.