

Datasheet for ABIN722691

anti-EHMT1 antibody**2** Images[Go to Product page](#)

Overview

Quantity:	100 µL
Target:	EHMT1
Reactivity:	Human, Mouse, Rat
Host:	Mouse
Clonality:	Monoclonal
Conjugate:	This EHMT1 antibody is un-conjugated
Application:	Western Blotting (WB), Immunofluorescence (Paraffin-embedded Sections) (IF (p)), Immunohistochemistry (Paraffin-embedded Sections) (IHC (p))

Product Details

Immunogen:	KLH conjugated synthetic peptide derived from human GLP-1
Clone:	1G9
Isotype:	IgG
Cross-Reactivity:	Human, Mouse, Rat
Purification:	Purified by Protein G.

Target Details

Target:	EHMT1
Alternative Name:	GLP (EHMT1 Products)
Background:	Synonyms: GCG, GLP 1, glucagon, Glucagon like peptide 1, GRPP, GLP-17-36, GLP-17-37,

Target Details

Oxyntomodulin, OXM, OXY, GLUC_HUMAN.

Background: Glucagon plays a key role in glucose metabolism and homeostasis. Regulates blood glucose by increasing gluconeogenesis and decreasing glycolysis. A counterregulatory hormone of insulin, raises plasma glucose levels in response to insulin-induced hypoglycemia. GLP-1 is a potent stimulator of glucose-dependent insulin release. Play important roles on gastric motility and the suppression of plasma glucagon levels. May be involved in the suppression of satiety and stimulation of glucose disposal in peripheral tissues, independent of the actions of insulin. Have growth-promoting activities on intestinal epithelium. May also regulate the hypothalamic pituitary axis (HPA) via effects on LH, TSH, CRH, oxytocin, and vasopressin. Belongs to the glucagon family.

Application Details

Application Notes: WB 1:300-5000
IHC-P 1:200-400
IF(IHC-P) 1:50-200

Restrictions: For Research Use only

Handling

Format: Liquid

Concentration: 1 µg/µL

Buffer: 0.01M TBS(pH 7.4) with 1 % BSA, 0.02 % Proclin300 and 50 % Glycerol.

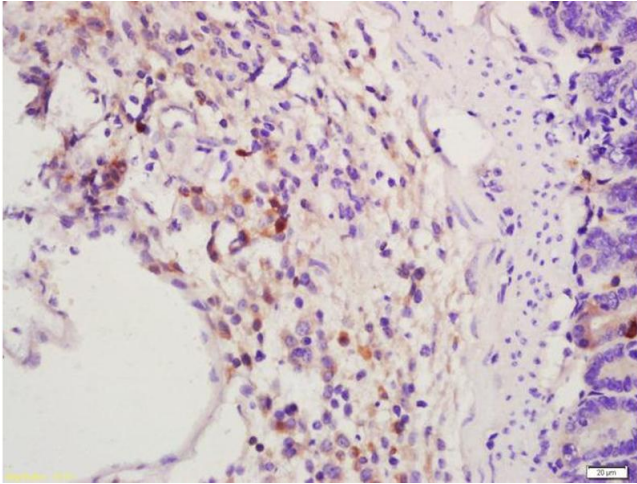
Preservative: ProClin

Precaution of Use: This product contains ProClin: a POISONOUS AND HAZARDOUS SUBSTANCE, which should be handled by trained staff only.

Storage: 4 °C,-20 °C

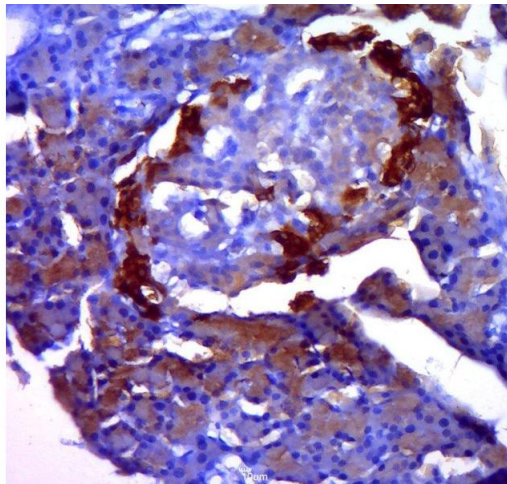
Storage Comment: Shipped at 4°C. Store at -20°C for one year. Avoid repeated freeze/thaw cycles.

Expiry Date: 12 months



Immunohistochemistry

Image 1. Formalin-fixed and paraffin embedded mouse intestine labeled with Anti-GLP-1(1G9) Monoclonal Antibody, Unconjugated (bsm-0933M) at 1:200 followed by conjugation to the secondary antibody and DAB staining



Immunohistochemistry (Paraffin-embedded Sections)

Image 2. Paraformaldehyde-fixed, paraffin embedded rat pancreas, Antigen retrieval by boiling in sodium citrate buffer (pH6.0) for 15min, Block endogenous peroxidase by 3% hydrogen peroxide for 20 minutes, Blocking buffer (normal goat serum) at 37°C for 30min, Antibody incubation with GLP-1(1G9) Monoclonal Antibody, Unconjugated (bsm-0933M) at 1:400 overnight at 4°C, followed by a conjugated secondary for 20 minutes and DAB staining.