



[Go to Product page](#)

Datasheet for ABIN7227058

anti-Cytochrome C antibody (AA 1268-1341)

6 Images

Overview

Quantity:	100 µL
Target:	Cytochrome C (CYCS)
Binding Specificity:	AA 1268-1341
Reactivity:	Human, Rat, Mouse
Host:	Rabbit
Clonality:	Polyclonal
Conjugate:	This Cytochrome C antibody is un-conjugated
Application:	Western Blotting (WB), Immunofluorescence (IF), ELISA, Immunohistochemistry (Paraffin-embedded Sections) (IHC (p))

Product Details

Purpose:	CYCS Polyclonal Antibody
Immunogen:	Synthetic peptide from human protein at AA range: 1268-1341
Isotype:	IgG
Specificity:	The antibody detects endogenous CYCS.
Purification:	The antibody was affinity-purified from rabbit serum by affinity-chromatography using specific immunogen

Target Details

Target:	Cytochrome C (CYCS)
---------	---------------------

Target Details

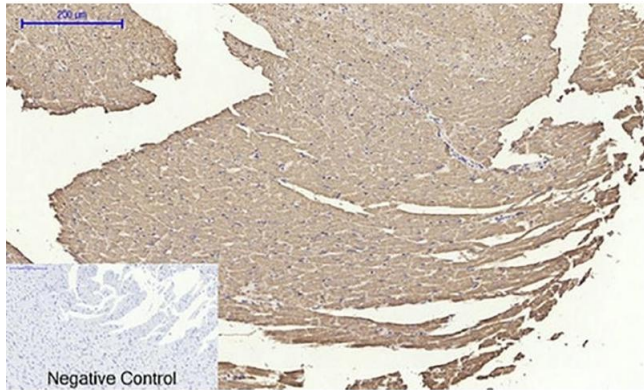
Alternative Name:	CYCS (CYCS Products)
Background:	Rabbit Anti-CYCS Polyclonal Antibody,Cytochrome c,CYCS (cytochrome c, somatic) encodes a small heme protein that functions as a central component of the electron transport chain in mitochondria. The encoded protein associates with the inner membrane of the mitochondrion where it accepts electrons from cytochrome b and transfers them to the cytochrome oxidase complex. This protein is also involved in initiation of apoptosis. Mutations in CYCS are associated with autosomal dominant nonsyndromic thrombocytopenia. Numerous processed pseudogenes of CYCS are found throughout the human genome.,CYCS
Molecular Weight:	observed band 15kDa
Gene ID:	54205
UniProt:	P99999
Pathways:	Apoptosis , Caspase Cascade in Apoptosis , Positive Regulation of Endopeptidase Activity

Application Details

Application Notes:	Optimal working dilutions should be determined experimentally by the investigator. Suggested starting dilutions are as follows: WB (1:500-1:2000), IHC-P (1:50-1:300), ELISA (1:5000-1:20000).
Comment:	Primary Antibody
Restrictions:	For Research Use only

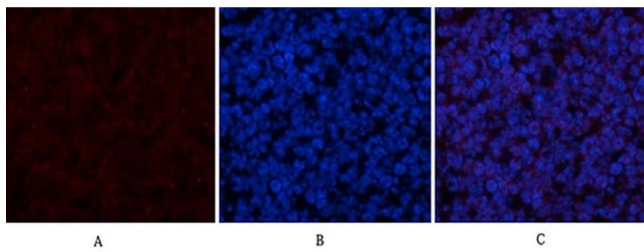
Handling

Format:	Liquid
Concentration:	1 mg/mL
Buffer:	PBS, pH 7.4, containing 0.02 % Sodium Azide as preservative and 50 % Glycerol.
Preservative:	Sodium azide
Precaution of Use:	This product contains Sodium azide: a POISONOUS AND HAZARDOUS SUBSTANCE which should be handled by trained staff only.
Storage:	-20 °C
Storage Comment:	Stable for one year at -20°C from date of shipment. For maximum recovery of product, centrifuge the original vial after thawing and prior to removing the cap. Aliquot to avoid repeated freezing and thawing.



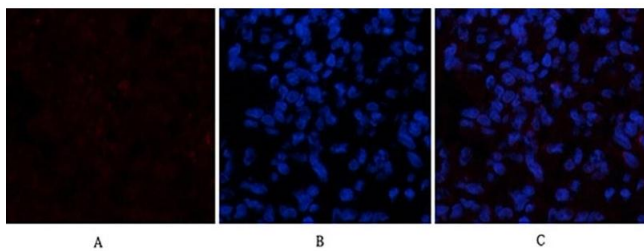
Immunohistochemistry

Image 1. Immunohistochemical analysis of paraffin-embedded rat heart tissue. 1, CYCS Polyclonal Antibody was diluted at 1:200 (4 °C, overnight). 2, Sodium citrate pH 6.0 was used for antibody retrieval (>98 °C, 20 min). 3, secondary antibody was diluted at 1:200 (room temperature, 30 min). Negative control was used by secondary antibody only.



Immunofluorescence

Image 2. Immunofluorescence analysis of mouse spleen tissue. 1, CYCS Polyclonal Antibody (red) was diluted at 1:200 (4 °C, overnight). 2, Cy3 Labeled secondary antibody was diluted at 1:300 (room temperature, 50 min). 3, Picture B: DAPI (blue) 10 min. Picture A: Target. Picture B: DAPI. Picture C: merge of A+B.



Immunofluorescence

Image 3. Immunofluorescence analysis of rat lung tissue. 1, CYCS Polyclonal Antibody (red) was diluted at 1:200 (4 °C, overnight). 2, Cy3 Labeled secondary antibody was diluted at 1:300 (room temperature, 50 min). 3, Picture B: DAPI (blue) 10 min. Picture A: Target. Picture B: DAPI. Picture C: merge of A+B.

Please check the [product details page](#) for more images. Overall 6 images are available for ABIN7227058.