

Datasheet for ABIN7227494
anti-GDF2 antibody (AA 371-420)



[Go to Product page](#)

4 Images

Overview

Quantity:	100 µL
Target:	GDF2
Binding Specificity:	AA 371-420
Reactivity:	Human, Mouse
Host:	Rabbit
Clonality:	Polyclonal
Conjugate:	This GDF2 antibody is un-conjugated
Application:	ELISA, Immunohistochemistry (Paraffin-embedded Sections) (IHC (p))

Product Details

Purpose:	BMP-9 Polyclonal Antibody
Immunogen:	Synthesized peptide derived from part region of human BMP-9 protein at AA range: 371-420
Isotype:	IgG
Specificity:	The antibody detects endogenous levels of BMP-9
Purification:	The antibody was affinity-purified from rabbit serum by affinity-chromatography using specific immunogen

Target Details

Target:	GDF2
Alternative Name:	BMP-9 (GDF2 Products)

Target Details

Background: Rabbit Anti-BMP-9 Polyclonal Antibody, Growth/differentiation factor 2, GDF-2, Bone morphogenetic protein 9, BMP-9, GDF2 encodes a secreted ligand of the TGF-beta (transforming growth factor-beta) superfamily of proteins. Ligands of this family bind various TGF-beta receptors leading to recruitment and activation of SMAD family transcription factors that regulate gene expression. The encoded preproprotein is proteolytically processed to generate each subunit of the disulfide-linked homodimer. This protein regulates cartilage and bone development, angiogenesis and differentiation of cholinergic central nervous system neurons. Mutations in GDF2 are associated with hereditary hemorrhagic telangiectasia., BMP-9

Gene ID: 2658

UniProt: [Q9UK05](#)

Pathways: [Transition Metal Ion Homeostasis](#)

Application Details

Application Notes: Optimal working dilutions should be determined experimentally by the investigator. Suggested starting dilutions are as follows: IHC-P (1:50-1:200), ELISA (1:10000-1:20000).

Comment: Primary Antibody

Restrictions: For Research Use only

Handling

Format: Liquid

Concentration: 1 mg/mL

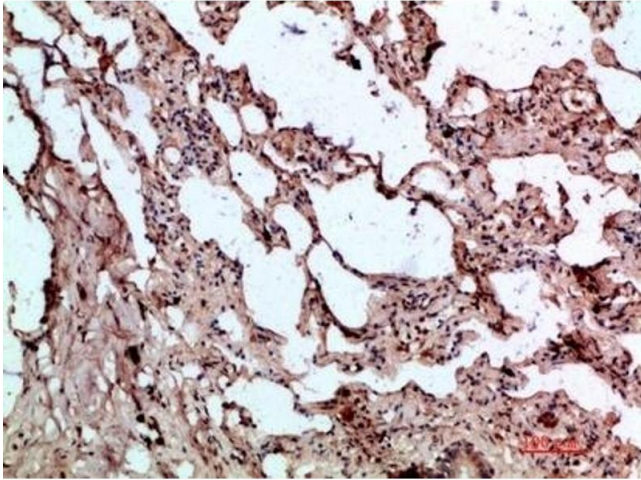
Buffer: PBS, pH 7.4, containing 0.02 % Sodium Azide as preservative and 50 % Glycerol as stabilizer.

Preservative: Sodium azide

Precaution of Use: This product contains Sodium azide: a POISONOUS AND HAZARDOUS SUBSTANCE which should be handled by trained staff only.

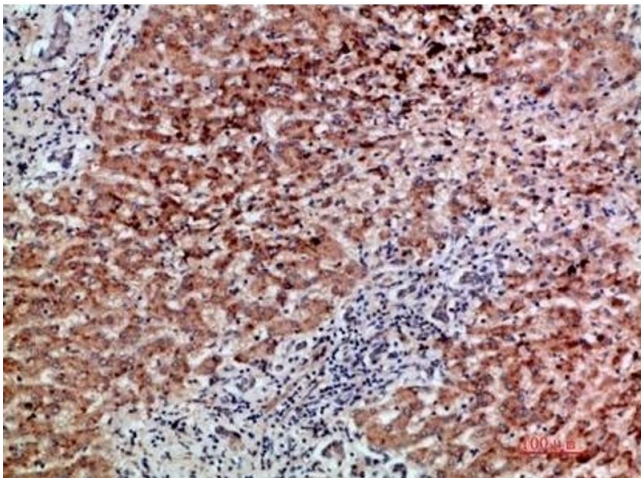
Storage: -20 °C

Storage Comment: Stable for one year at -20°C from date of shipment. For maximum recovery of product, centrifuge the original vial after thawing and prior to removing the cap. Aliquot to avoid repeated freezing and thawing.



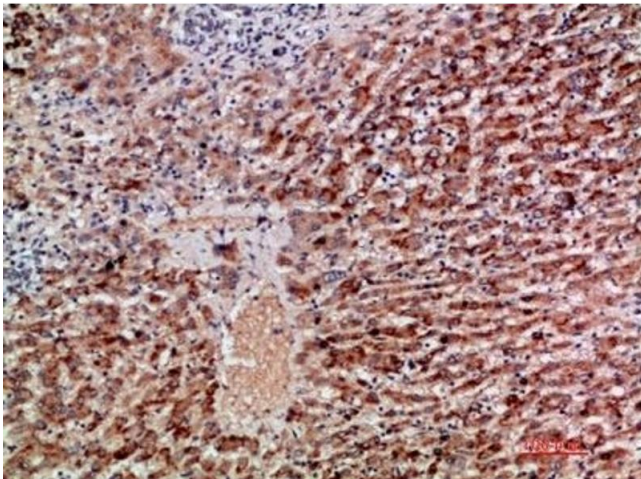
Immunohistochemistry

Image 1. Immunohistochemical analysis of paraffin-embedded human-lung, antibody was diluted at 1:200.



Immunohistochemistry

Image 2. Immunohistochemical analysis of paraffin-embedded human-liver-cancer, antibody was diluted at 1:200.



Immunohistochemistry

Image 3. Immunohistochemical analysis of paraffin-embedded human-liver-cancer, antibody was diluted at 1:200.

Please check the [product details page](#) for more images. Overall 4 images are available for ABIN7227494.