

Datasheet for ABIN722766
anti-Endothelin 1 antibody[Go to Product page](#)

2 Images

Overview

Quantity:	100 µL
Target:	Endothelin 1 (EDN1)
Reactivity:	Human, Rat
Host:	Mouse
Clonality:	Monoclonal
Conjugate:	This Endothelin 1 antibody is un-conjugated
Application:	Western Blotting (WB), Immunofluorescence (Paraffin-embedded Sections) (IF (p)), Immunohistochemistry (Paraffin-embedded Sections) (IHC (p))

Product Details

Immunogen:	KLH conjugated synthetic peptide derived from human Endothelin-1
Clone:	2C4
Isotype:	IgG
Cross-Reactivity:	Human, Rat
Purification:	Purified by Protein G.

Target Details

Target:	Endothelin 1 (EDN1)
Alternative Name:	Endothelin-1 (EDN1 Products)
Background:	Synonyms: EDN 1, EDN1, EDN1 protein, Endothelin1, ET 1, ET1,

Target Details

Background: Endothelins (ET) show potent constrictor activity in vascular and non-vascular smooth muscle. This family of 21-amino acid peptides exists in at least three isoforms - ET-1, ET-2, and ET-3, and is produced in endothelial and epithelial cells. ET's can mediate biological effects in cells and tissues, and have been shown to bind to an ET receptor in the lung, kidney, heart, and liver. Endothelin 1 is expressed in lung, placental stem villi vessels and in cultured placental vascular smooth muscle cells.

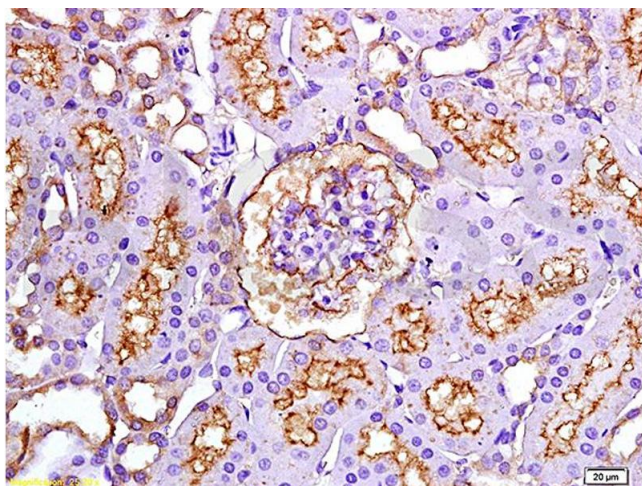
Gene ID:	1906
Pathways:	Hormone Transport , Negative Regulation of Hormone Secretion , Regulation of Systemic Arterial Blood Pressure by Hormones , cAMP Metabolic Process , Regulation of Muscle Cell Differentiation , Regulation of G-Protein Coupled Receptor Protein Signaling , Regulation of Cell Size

Application Details

Application Notes:	WB 1:300-5000 IHC-P 1:200-400 IF(IHC-P) 1:50-200
Restrictions:	For Research Use only

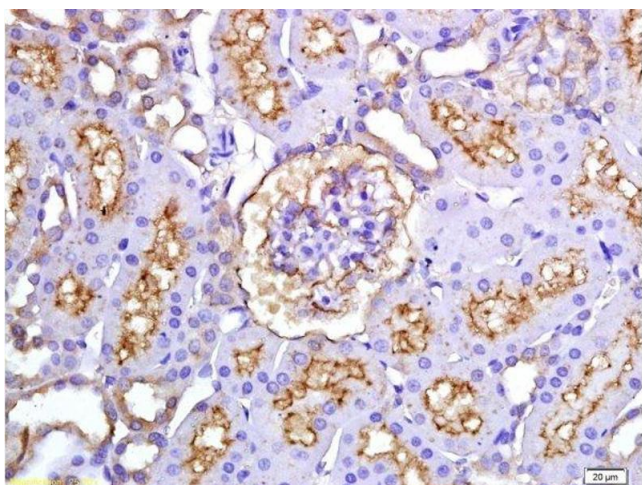
Handling

Format:	Liquid
Concentration:	1 µg/µL
Buffer:	0.01M TBS(pH 7.4) with 1 % BSA, 0.02 % Proclin300 and 50 % Glycerol.
Preservative:	ProClin
Precaution of Use:	This product contains ProClin: a POISONOUS AND HAZARDOUS SUBSTANCE, which should be handled by trained staff only.
Storage:	4 °C,-20 °C
Storage Comment:	Shipped at 4°C. Store at -20°C for one year. Avoid repeated freeze/thaw cycles.
Expiry Date:	12 months



Immunohistochemistry

Image 1.



Immunohistochemistry (Paraffin-embedded Sections)

Image 2. Formalin-fixed and paraffin embedded rat kidney tissue labeled with Anti-ET-1 Polyclonal Antibody, Unconjugated(bsm-0954M) 1:200 at followed by conjugation to the secondary antibody and DAB staining