

Datasheet for ABIN722856  
**anti-Fibrinogen antibody**[Go to Product page](#)

## 2 Images

## Overview

Quantity:	100 µL
Target:	Fibrinogen
Reactivity:	Human
Host:	Mouse
Clonality:	Monoclonal
Conjugate:	This Fibrinogen antibody is un-conjugated
Application:	Immunohistochemistry (Paraffin-embedded Sections) (IHC (p)), Immunofluorescence (Paraffin-embedded Sections) (IF (p))

## Product Details

Immunogen:	Fibrinogen from human plasma
Clone:	4F7
Isotype:	IgG1
Cross-Reactivity:	Human
Purification:	Purified by Protein G.

## Target Details

Target:	Fibrinogen
Alternative Name:	Human Fibrinogen ( <a href="#">Fibrinogen Products</a> )
Background:	Synonyms: FGA, FGA protein, FGB, FGG, Fib2, Fibrin alpha chain ,Fibrinogen A alpha

## Target Details

polypeptide, Fibrinogen A alpha polypeptide chain, Fibrinogen alpha chain, Fibrinogen B alpha polypeptide, Fibrinogen beta chain, Fibrinogen G alpha polypeptide, Fibrinogen gamma chain, MGC104327, MGC119422, MGC119423, MGC119425, MGC120405, FIBA\_HUMAN.

Background: Fibrinogen is the main protein of blood coagulation system. It is a large protein and it consists of two identical subunits that contain three polypeptide chains: alpha, beta and gamma. All chains are connected with each other by a number of disulfide bonds.

Fibrinopeptides A (1 to 16 amino acids) and B (1 to 17 amino acids) are released by thrombin from the N terminal parts of alpha and beta chains, respectively. In this way fibrinogen is converted into fibrin, which by means of polymerization forms a fibrin clot. Fibrinogen clotting underlies pathogenesis of MI, thromboembolism and thromboses of arteries and veins, since fibrin is the main substrate for thrombus formation. Fibrinogen activation is also involved in pathogenesis of inflammation, tumor growth and many other diseases. The normal fibrinogen concentration in plasma is about 3 mg/mL. The elevated level of fibrinogen in patient's blood is regarded as an independent risk factor for cardiovascular diseases. An increase in blood fibrinogen concentration was shown to be a strong predictor of coronary heart disease (Sonel A. et al, and Rapold H.J. et al). All these facts make fibrinogen an important parameter in the diagnosis of cardiovascular diseases.

Gene ID: 2243

## Application Details

Application Notes: IHC-P 1:200-400  
IF(IHC-P) 1:50-200

Restrictions: For Research Use only

## Handling

Format: Liquid

Concentration: 1 µg/µL

Buffer: 0.01M TBS( pH 7.4) with 1 % BSA, 0.02 % Proclin300 and 50 % Glycerol.

Preservative: ProClin

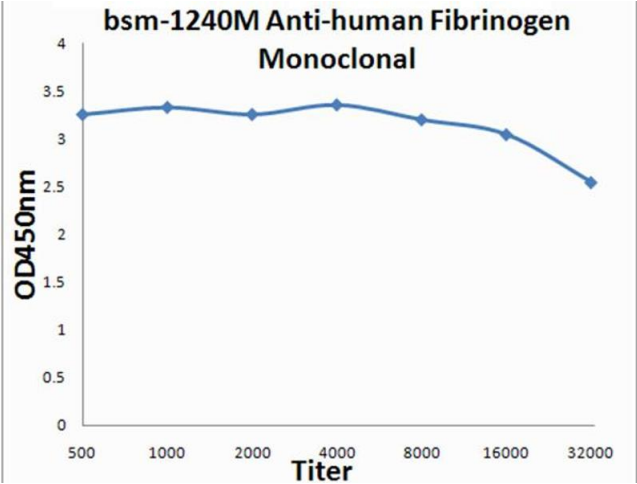
Precaution of Use: This product contains ProClin: a POISONOUS AND HAZARDOUS SUBSTANCE, which should be handled by trained staff only.

Storage: 4 °C, -20 °C

Handling

Storage Comment:	Shipped at 4°C. Store at -20°C for one year. Avoid repeated freeze/thaw cycles.
Expiry Date:	12 months

Images



ELISA

Image 1.

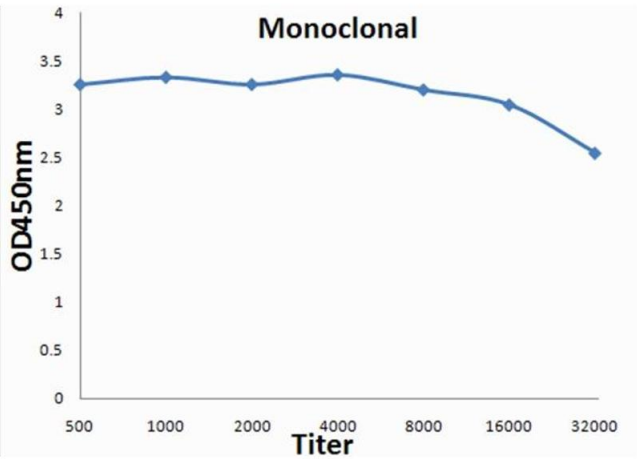


Image 2.