

Datasheet for ABIN7228780
anti-GREM2 antibody (AA 71-120)



[Go to Product page](#)

5 Images

Overview

Quantity:	100 µL
Target:	GREM2
Binding Specificity:	AA 71-120
Reactivity:	Human, Mouse
Host:	Rabbit
Clonality:	Polyclonal
Application:	Western Blotting (WB), ELISA, Immunohistochemistry (Paraffin-embedded Sections) (IHC (p))

Product Details

Purpose:	Gremlin-2 Polyclonal Antibody
Immunogen:	Synthesized peptide derived from part region of human Gremlin-2 protein at AA range: 71-120
Isotype:	IgG
Specificity:	The antibody detects endogenous levels of Gremlin-2
Purification:	The antibody was affinity-purified from rabbit serum by affinity-chromatography using specific immunogen

Target Details

Target:	GREM2
Alternative Name:	Gremlin-2 (GREM2 Products)
Background:	Rabbit Anti-Gremlin-2 Polyclonal Antibody, Gremlin-2, Cysteine knot superfamily 1, BMP

Target Details

antagonist 2, DAN domain family member 3, Protein related to DAN and cerberus, Gremlin-2 encodes a member of the BMP (bone morphogenic protein) antagonist family. Like BMPs, BMP antagonists contain cystine knots and typically form homo- and heterodimers. The CAN (cerberus and dan) subfamily of BMP antagonists, to which Gremlin-2 belongs, is characterized by a C-terminal cystine knot with an eight-membered ring. The antagonistic effect of the secreted glycosylated protein encoded by this gene is likely due to its direct binding to BMP proteins. As an antagonist of BMP, Gremlin-2 may play a role in regulating organogenesis, body patterning, and tissue differentiation., Gremlin-2

Molecular Weight: observed band 19kDa

Gene ID: 64388

UniProt: [Q9H772](#)

Application Details

Application Notes: Optimal working dilutions should be determined experimentally by the investigator. Suggested starting dilutions are as follows: WB (1:500-1:2000), IHC-P (1:500-1:200), ELISA (1:10000-1:20000).

Comment: Primary Antibody

Restrictions: For Research Use only

Handling

Format: Liquid

Concentration: 1 mg/mL

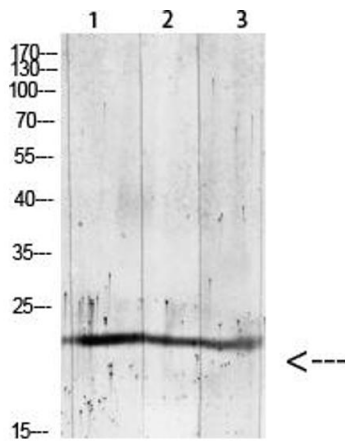
Buffer: PBS, pH 7.4, containing 0.02 % Sodium Azide as preservative and 50 % Glycerol as stabilizer.

Preservative: Sodium azide

Precaution of Use: This product contains Sodium azide: a POISONOUS AND HAZARDOUS SUBSTANCE which should be handled by trained staff only.

Storage: -20 °C

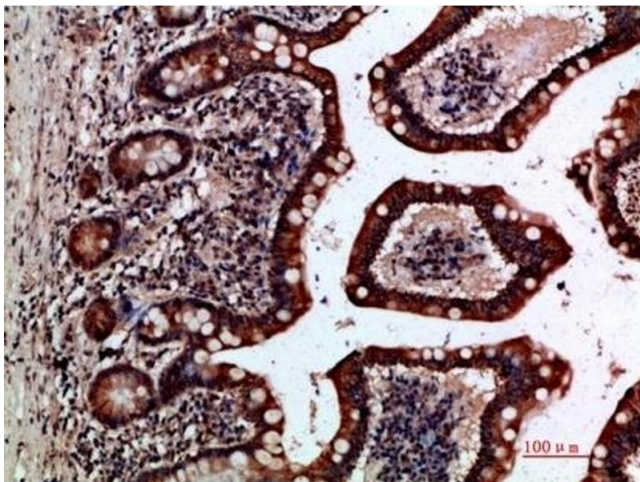
Storage Comment: Stable for one year at -20°C from date of shipment. For maximum recovery of product, centrifuge the original vial after thawing and prior to removing the cap. Aliquot to avoid repeated freezing and thawing.



1, mouse-kidney 2, 293T 3, mouse-lung

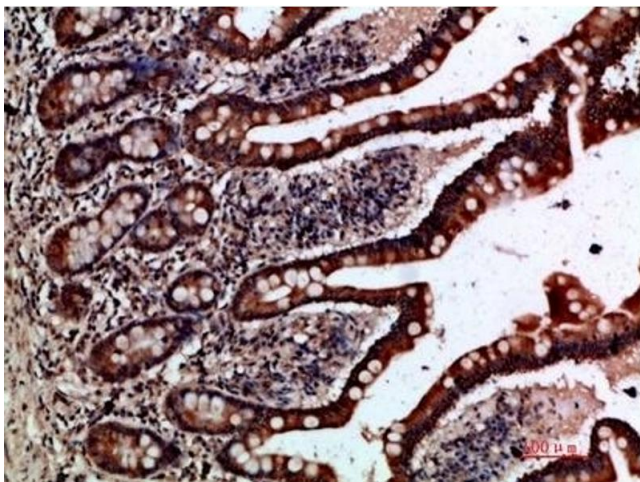
Western Blotting

Image 1. Western blot analysis of RAT-brain lysate, antibody was diluted at 1:1000. HRP, Goat Anti-Rabbit IgG (ABIN7205155) secondary antibody was diluted at 1:20000.



Immunohistochemistry

Image 2. Immunohistochemical analysis of paraffin-embedded human-small-intestine, antibody was diluted at 1:200.



Immunohistochemistry

Image 3. Immunohistochemical analysis of paraffin-embedded human-small-intestine, antibody was diluted at 1:200.

Please check the [product details page](#) for more images. Overall 5 images are available for ABIN7228780.