

Datasheet for ABIN722901

anti-alpha Fetoprotein antibody**3** Images**6** Publications[Go to Product page](#)

Overview

Quantity:	100 µL
Target:	alpha Fetoprotein (AFP)
Reactivity:	Human, Rat
Host:	Mouse
Clonality:	Monoclonal
Conjugate:	This alpha Fetoprotein antibody is un-conjugated
Application:	Western Blotting (WB), ELISA, Immunohistochemistry (Paraffin-embedded Sections) (IHC (p)), Immunofluorescence (Paraffin-embedded Sections) (IF (p))

Product Details

Immunogen:	Full length human AFP protein
Clone:	A2
Isotype:	IgG
Cross-Reactivity:	Human, Rat
Purification:	Purified by Protein G.

Target Details

Target:	alpha Fetoprotein (AFP)
Alternative Name:	AFP (AFP Products)
Background:	Synonyms: AFPD, FETA, HPAFP, Alpha-fetoprotein, Alpha-1-fetoprotein, Alpha-fetoglobulin, AFP

Target Details

Background: Alpha-fetoprotein (AFP) is a major plasma protein produced by the yolk sac and the liver during fetal life. Alpha-fetoprotein expression in adults is often associated with hepatoma or teratoma. However, hereditary persistence of alpha-fetoprotein may also be found in individuals with no obvious pathology. The protein is thought to be the fetal counterpart of serum albumin, and the alpha-fetoprotein and albumin genes are present in tandem in the same transcriptional orientation on chromosome 4. Alpha-fetoprotein is found in monomeric as well as dimeric and trimeric forms, and binds copper, nickel, fatty acids and bilirubin. The level of alpha-fetoprotein in amniotic fluid is used to measure renal loss of protein to screen for spina bifida and anencephaly.

Gene ID: 174

UniProt: [P02771](#)

Pathways: [C21-Steroid Hormone Metabolic Process](#)

Application Details

Application Notes: WB 1:300-5000
ELISA 1:500-1000
IHC-P 1:200-400
IF(IHC-P) 1:50-200

Restrictions: For Research Use only

Handling

Format: Liquid

Concentration: 1 µg/µL

Buffer: 0.01M TBS(pH 7.4) with 1 % BSA, 0.02 % Proclin300

Preservative: ProClin

Precaution of Use: This product contains ProClin: a POISONOUS AND HAZARDOUS SUBSTANCE, which should be handled by trained staff only.

Storage: -20 °C

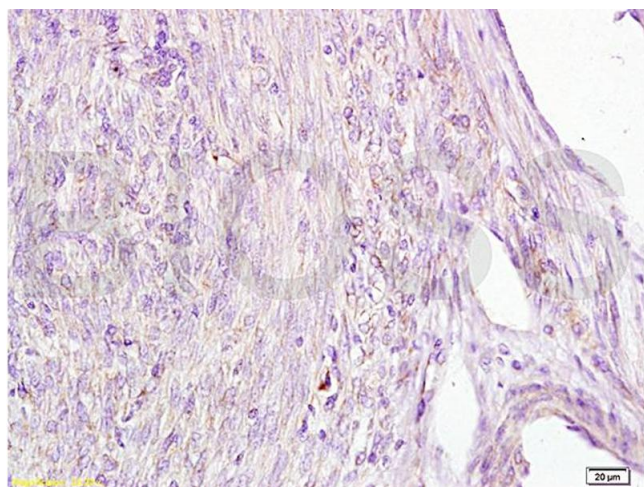
Storage Comment: Store at -20°C for 12 months.

Expiry Date: 12 months

Publications

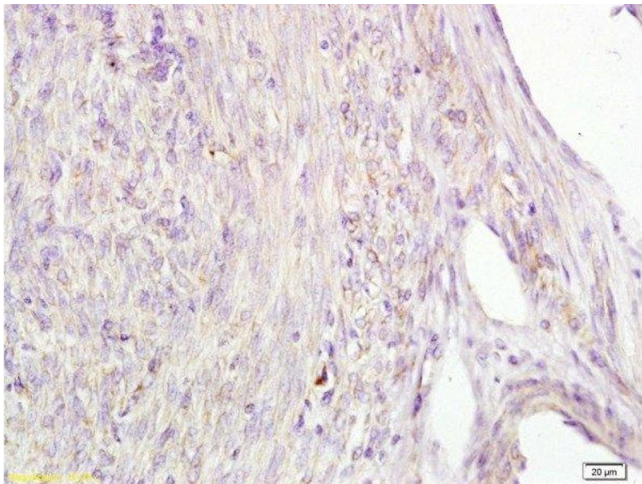
- Product cited in: Zhang, Tan, Zhang, Miao, Zou: "Spectrum-Based Electrochemiluminescent Immunoassay with Ternary CdZnSe Nanocrystals as Labels." in: **Analytical chemistry**, Vol. 88, Issue 13, pp. 6947-53, (2016) ([PubMed](#)).
- Liu, Zhang, Lu, Li: "3-D microarray and its microfabrication-free fluidic immunoassay device." in: **Analytica chimica acta**, Vol. 889, pp. 187-93, (2015) ([PubMed](#)).
- Zhao, Wu, Ju, Yan: "Multiplexed electrochemical immunoassay using streptavidin/nanogold/carbon nanohorn as a signal tag to induce silver deposition." in: **Analytica chimica acta**, Vol. 847, pp. 37-43, (2014) ([PubMed](#)).
- Lin, Mei, Liu, Jin, Wang, Wang: "Cascade signal amplification for electrochemical immunosensing by integrating biobarcode probes, surface-initiated enzymatic polymerization and silver nanoparticle deposition." in: **Biosensors & bioelectronics**, Vol. 66, pp. 177-83, (2014) ([PubMed](#)).
- Zong, Wu, Xu, Ju, Yan: "Multilayer hemin/G-quadruplex wrapped gold nanoparticles as tag for ultrasensitive multiplex immunoassay by chemiluminescence imaging." in: **Biosensors & bioelectronics**, Vol. 43, pp. 372-8, (2013) ([PubMed](#)).
- There are more publications referencing this product on: [Product page](#)

Images



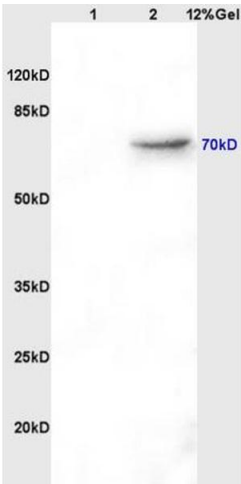
Immunohistochemistry

Image 1.



Immunohistochemistry (Paraffin-embedded Sections)

Image 2. Formalin-fixed and human cervical carcinoma tissue labeled with Anti-AFP Polyclonal Antibody (bsm-1621M) , Unconjugated 1:100 followed by conjugation to the secondary antibody and DAB staining



SDS-PAGE

Image 3. Lane 1: rat brain lysates Lane 2: rat kidney lysates probed with Mouse Anti-AFP(A2) Monoclonal Antibody, Unconjugated (ABIN722901) at 1:200 in 4 °C. Followed by conjugation to secondary antibody at 1:3000 90min in 37 °C. Predicted band 70kD. Observed band size: 70kD.