

Datasheet for ABIN722961

anti-Prostate Specific Antigen antibody[Go to Product page](#)**1** Image**2** Publications

Overview

Quantity:	100 µL
Target:	Prostate Specific Antigen (PSA)
Reactivity:	Human, Rabbit
Host:	Mouse
Clonality:	Monoclonal
Conjugate:	This Prostate Specific Antigen antibody is un-conjugated
Application:	ELISA, Western Blotting (WB), Immunohistochemistry (Paraffin-embedded Sections) (IHC (p)), Immunofluorescence (Paraffin-embedded Sections) (IF (p))

Product Details

Immunogen:	Full length native protein purified from human
Clone:	Pa3
Isotype:	IgG
Cross-Reactivity:	Human, Rabbit
Purification:	Purified by Protein G.

Target Details

Target:	Prostate Specific Antigen (PSA)
Alternative Name:	PSA (PSA Products)
Background:	Synonyms: Prostate specic antigen, Gamma seminoprotein, hK3, Kallikrein 3, Kallikrein related

Target Details

peptidase 3, KLK 3, KLK2A1, KLK3, P 30 antigen, P30 antigen, Prostate Specic Antigen, PSA, Semenogelase, Semin.

Background: Kallikreins are a subgroup of serine proteases having diverse physiological functions. Growing evidence suggests that many kallikreins are implicated in carcinogenesis and some have potential as novel cancer and other disease biomarkers. This gene is one of the fifteen kallikrein subfamily members located in a cluster on chromosome 19. Its protein product is a protease present in seminal plasma. It is thought to function normally in the liquefaction of seminal coagulum, presumably by hydrolysis of the high molecular mass seminal vesicle protein. Serum level of this protein, called PSA in the clinical setting, is useful in the diagnosis and monitoring of prostatic carcinoma. Alternate splicing of this gene generates several transcript variants encoding different isoforms. [provided by RefSeq, Jul 2008].

Gene ID: 354

Pathways: [Complement System](#)

Application Details

Application Notes: WB 1:300-5000
ELISA 1:500-1000
IHC-P 1:200-400
IF(IHC-P) 1:50-200

Restrictions: For Research Use only

Handling

Format: Liquid

Concentration: 1 µg/µL

Buffer: 0.01M TBS(pH 7.4) with 1 % BSA, 0.02 % Proclin300

Preservative: ProClin

Precaution of Use: This product contains ProClin: a POISONOUS AND HAZARDOUS SUBSTANCE, which should be handled by trained staff only.

Storage: -20 °C

Storage Comment: Store at -20°C for 12 months.

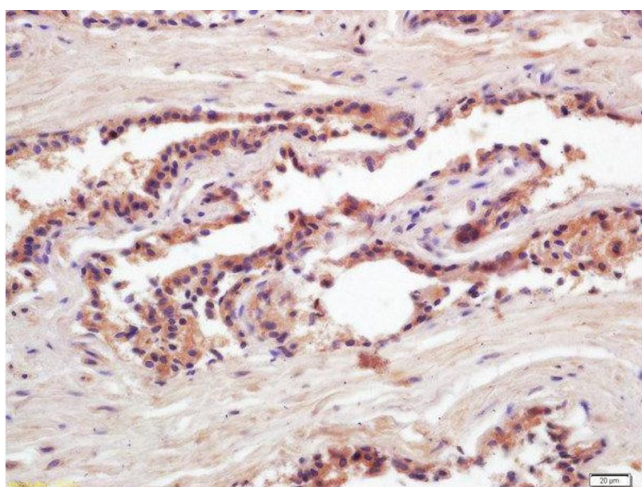
Expiry Date: 12 months

Publications

Product cited in: Liu, Zhang, Yu, Xie, Li: "A concentration-dependent multicolor conversion strategy for ultrasensitive colorimetric immunoassay with the naked eye." in: **Analytica chimica acta**, Vol. 963, pp. 129-135, (2018) ([PubMed](#)).

Zhou, He, Zhang, Sun, Zou: "Spectrum-based and color-selective electrochemiluminescence immunoassay for determining human prostate specific antigen in near-infrared region." in: **Talanta**, Vol. 165, pp. 117-121, (2017) ([PubMed](#)).

Images



Immunohistochemistry (Paraffin-embedded Sections)

Image 1. Formalin-fixed and paraffin embedded rat submandibular gland labeled with Mouse Anti-PSA(Pa3) Monoclonal Antibody (bsm-1625M) at 1:200 followed by conjugation to the secondary antibody and DAB staining