

Datasheet for ABIN7232285
**G Protein-Coupled Receptor 110 Protein (GPR110) (AA 1-218)
(GST tag)**



[Go to Product page](#)

1 Image

Overview

Quantity:	2 µg
Target:	G Protein-Coupled Receptor 110 (GPR110)
Protein Characteristics:	AA 1-218
Origin:	Human
Source:	Wheat germ
Protein Type:	Recombinant
Purification tag / Conjugate:	This G Protein-Coupled Receptor 110 protein is labelled with GST tag.
Application:	ELISA, Western Blotting (WB), Affinity Purification (AP), Antibody Array (AA)

Product Details

Purpose:	GPR110 (Human) Recombinant Protein (P01)
Sequence:	MKVGVLWLIS FFTFTDGHGG FLGKNDGIKT KKELIVNKKK HLGPVVEEYQL LLQVTYRDSK EKRDLRNFLK LLKPPLLWSH GLIRIIRAKA TTDCNSLNGV LQCTCEDSYT WFPPSCLDPQ NCYLHTAGAL PSCECHLNNL SQSVNFCERT KIWGTFKINE RFTNDLLNSS SAIYSKYANG IEIQLKKAYE RIQGFESVQV TQFRMSLLSP KLECNGTI
Characteristics:	Human GPR110 full-length ORF (NP_079324.2, 1 a.a. - 218 a.a.) recombinant protein with GST-tag at N-terminal.
Purification:	in vitro wheat germ expression system

Target Details

Target:	G Protein-Coupled Receptor 110 (GPR110)
---------	---

Target Details

Alternative Name:	GPR110 (GPR110 Products)
Background:	Full Gene Name: G protein-coupled receptor 110 Synonyms: FLJ22684,FLJ30646,KPG_012,MGC125952,PGR19,hGPCR36
Gene ID:	266977
NCBI Accession:	NM_025048

Application Details

Application Notes:	Optimal working dilution should be determined by the investigator.
Comment:	Preparation method: in vitro, wheat germ expression system Product Quality tested by: 12.5% SDS-PAGE Stained with Coomassie Blue.
Restrictions:	For Research Use only

Handling

Buffer:	50 mM Tris-HCl, 10 mM reduced Glutathione, pH =8.0 in the elution buffer.
Handling Advice:	Aliquot to avoid repeated freezing and thawing.
Storage:	-80 °C
Storage Comment:	Best use within three months from the date of receipt of this protein.

Images

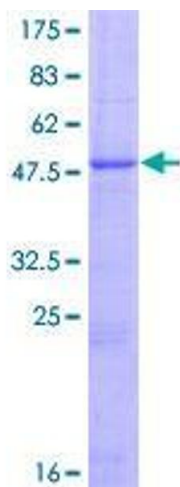


Image 1.