



[Go to Product page](#)

Datasheet for ABIN7233801

## anti-CCL7 antibody

### 1 Image

#### Overview

Quantity:	200 µL
Target:	CCL7
Reactivity:	Rat
Host:	Rabbit
Clonality:	Polyclonal
Conjugate:	This CCL7 antibody is un-conjugated
Application:	Immunohistochemistry (IHC)

#### Product Details

Immunogen:	Recombinant human C-C motif chemokine 7 protein
Isotype:	IgG
Characteristics:	Polyclonal Antibody
Purification:	Affinity purification

#### Target Details

Target:	CCL7
Alternative Name:	CCL7 ( <a href="#">CCL7 Products</a> )
Background:	This gene encodes monocyte chemotactic protein 3, a secreted chemokine which attracts macrophages during inflammation and metastasis. It is a member of the C-C subfamily of chemokines which are characterized by having two adjacent cysteine residues. The protein is an in vivo substrate of matrix metalloproteinase 2, an enzyme which degrades components of

## Target Details

---

the extracellular matrix. This gene is part of a cluster of C-C chemokine family members on chromosome 17q.

UniProt: [P80098](#)

## Application Details

---

Application Notes: IHC 1:50-1:100

Restrictions: For Research Use only

## Handling

---

Format: Liquid

Concentration: 2 mg/mL

Buffer: PBS with 0.02 % sodium azide, 50 % glycerol, pH 7.3

Preservative: Sodium azide

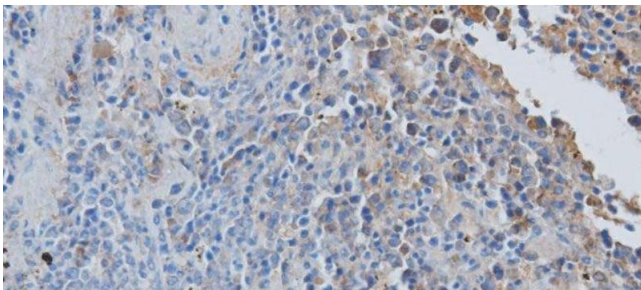
Precaution of Use: This product contains Sodium azide: a POISONOUS AND HAZARDOUS SUBSTANCE which should be handled by trained staff only.

Storage: -20 °C

Storage Comment: Store at -20°C. Avoid freeze / thaw cycles.

## Images

---



### Immunohistochemistry (Paraffin-embedded Sections)

**Image 1.** Immunohistochemistry of paraffin-embedded Rat spleen using CCL7 Polyclonal Antibody at dilution of 1:50