

Datasheet for ABIN7233849 anti-KNSTRN antibody



[Go to Product page](#)

1 Image

Overview

Quantity:	200 µL
Target:	KNSTRN
Reactivity:	Human
Host:	Rabbit
Clonality:	Polyclonal
Conjugate:	This KNSTRN antibody is un-conjugated
Application:	Western Blotting (WB)

Product Details

Immunogen:	Recombinant Human Small kinetochore-associated protein protein
Isotype:	IgG
Characteristics:	Polyclonal Antibody
Purification:	Affinity purification

Target Details

Target:	KNSTRN
Alternative Name:	C15orf23 (KNSTRN Products)
Background:	Essential component of the mitotic spindle required for faithful chromosome segregation and progression into anaphase . Promotes the metaphase-to-anaphase transition and is required for chromosome alignment, normal timing of sister chromatid segregation, and maintenance of spindle pole architecture. The astrin (SPAG5)-kinastrin (SKAP) complex promotes stable

Target Details

microtubule-kinetochore attachments. Required for kinetochore oscillations and dynamics of microtubule plus-ends during live cell mitosis, possibly by forming a link between spindle microtubule plus-ends and mitotic chromosomes to achieve faithful cell division.

Molecular Weight: Observed_MW: 35 kDa
Calculated_MW: 35 kDa

UniProt: [Q9Y448](#)

Pathways: [M Phase](#)

Application Details

Application Notes: WB 1:500-1:2000

Restrictions: For Research Use only

Handling

Format: Liquid

Concentration: 2 mg/mL

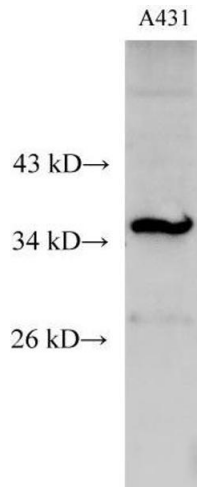
Buffer: PBS with 0.05 % Proclin300 and 50 % glycerol, pH 7.4.

Preservative: ProClin

Precaution of Use: This product contains ProClin: a POISONOUS AND HAZARDOUS SUBSTANCE which should be handled by trained staff only.

Storage: -20 °C

Storage Comment: Store at -20°C. Avoid freeze / thaw cycles.



Western Blotting

Image 1. Western Blot analysis of A431 cell using C15orf23 Polyclonal Antibody at dilution of 1:500